



Garda Research Unit

Research Report No. 3/02

Cigarette, Alcohol and Drug Use Among Second-Level Students in Waterford/Kilkenny and Kerry Garda Divisions

Kiran Sarma, Mary Walker and William Ryan

For further information contact:

**Garda Research Unit
Garda Síochána College
Templemore
Co. Tipperary**

Tel: (0504) 35428

Fax: (0504) 35455

Table of Contents.

| | |
|--|----------|
| <i>Executive Summary</i> | <i>i</i> |
| 1. An Introduction to the Research | 1 |
| 2. Research Methodology | 4 |
| 3. Overview of Tobacco, Alcohol and Drug Misuse – Full Sample | 9 |
| 4. Tobacco, Alcohol and Drug Misuse in Waterford/Kilkenny Garda Division | 20 |
| 5. Tobacco, Alcohol and Drug Misuse in Kerry Garda Division | 31 |
| 6. Overview and Conclusion | 43 |
| 7. Bibliography | 47 |
| 8. Appendix A: Sample Profile | 48 |
| 9. Appendix B: Questionnaire Employed | 51 |
| 10. Appendix C: Pre-test Instructions | 76 |
| 11. Appendix D: Additional Information on Misuse in the General Sample | 77 |
| 12. Appendix E: Additional Information on Misuse for Waterford/Kilkenny Sample | 81 |
| 13. Appendix F: Additional Information on Misuse for Kerry Sample | 84 |

EXECUTIVE SUMMARY

Introduction

This research examines the prevalence and nature of tobacco, alcohol and drug use by second-level school students in Waterford/Kilkenny and Kerry Garda Divisions. The primary intention was to provide management with an overview of the extent of the problem in their respective divisions that could be used in the design and implementation of strategies to address the problem. On a second level, the report serves as a pilot study addressing the feasibility of similar research across the 25 Garda Divisions.

Surveys were administered by members of the Garda Research Unit in March and April 2002 in 31 second-level schools. Three thousand and forty students, enrolled in either 2nd Year or 5th Year (pre-Leaving Certificate) provided valid responses, 1715 from Waterford/Kilkenny Division and the 1325 from Kerry Division.

Overview of findings

Combined sample

Based on the combined sample, the picture that emerges is that approximately 24 percent of those surveyed can be considered smokers (i.e. they smoke at least once a week). Seventy seven percent have taken a drink at some stage in their life and 39 percent have been drunk in the preceding month. Females were more likely to have smoked at some time in the past than males, who were more likely to have consumed alcohol in the 30 days preceding the survey and to have been drunk in that time.

More than one in five (23%) of those surveyed had taken drugs during their lifetime and 29 percent had 'ever wanted to try' them. The prevalence of drug use was higher for 5th year students (32%) than 2nd year students (15%). Cannabis is the drug most commonly used. Most misusers are supplied by their friends and take drugs in public environments or in private residences. Males are more prominent misusers than females.

Waterford/Kilkenny Garda Division

Among students in Waterford/Kilkenny Garda Division, which included respondents from both cities, 26 percent can be considered regular smokers. Seventy nine percent admitted drinking alcohol during their lives and 41 percent had been drunk in the month preceding the survey. On the last occasion they were drunk, six percent reported that they were intoxicated to the extent that they 'were unable to stand'. Fifty nine percent reported that they had spent two or more successive days drinking in the past year. Private residences, public places and public houses emerge as important drinking environments.

Twenty seven percent of this sample reported taking drugs at some stage in their lives and 30 percent stated that they had 'ever wanted to try' drugs. Almost half (46%) claimed that they had been offered drugs. When asked to identify the source of their first drug, 86 percent said that it came from a friend. Just 20 percent felt that enough drugs-related information was provided in school.

Kerry Garda Division

Twenty percent of students in Kerry Division smoke on a weekly basis. Three out of four (75%) had consumed alcohol at some point in their lives, 36 percent had been drunk in the previous 30 days and six percent reported that on the last occasion they were drunk, they were 'unable to stand' on their feet.

Almost one in five (18%) had taken drugs, 27 percent reported wanting 'to try' drugs and 37 percent had been offered drugs. For the vast majority (89%) cannabis was the first drug tried. Friends were the most likely source of drugs and most were taken in a residential house or public area. Seventy one percent of misusers are motivated by curiosity.

Recommendations of the Report

A number of recommendations are suggested based on these findings:

- Given the reported dearth of information provided to second-level students either at home or in school, renewed emphasis should be placed on drugs, alcohol and tobacco-related education in both environments.
- Moreover, as much misuse takes place at home, and a considerable volume of alcohol is sourced there, parents should be made aware of the importance of controlling access and monitoring behaviour.
- The joint efforts of the Garda Síochána and publicans to minimise underage drinking should be continued as this research illustrates that many students still purchase and consume alcohol in public houses.
- That public areas such as beaches, parks and 'the street', are prevalent misuse environments merits further consideration. Closer surveillance of teenage activity in these areas and the use of traditional deterrents to offending will help the situation but the extent of misuse in these environments would tend to suggest that a more holistic strategy is required.
- The research illustrates that similar research across the 25 Garda Divisions is feasible and potentially useful. Given that the findings were largely in line with past research, however, it is unclear just how valuable or insightful it would be.

CHAPTER 1 **AN INTRODUCTION TO THE RESEARCH**

Introduction

This chapter outlines the rationale for the research conducted and its key objectives. Some of the key facets of tobacco, alcohol and drug misuse by post-primary school students in Ireland are presented as is an overview of the current study. It concludes with a chapter by chapter introduction of the rest of the report.

Background and Objectives

Writing in *Facts About Drug Abuse in Ireland*, Dr. Desmond Corrigan notes that the various potential consequences of tobacco, alcohol and drug (TAD) misuse include a predisposition to disease, contraction of HIV or Hepatitis B and involvement in crime (Corrigan, 1994). The psychological affects of misuse are no less serious. It is of some concern, therefore, that widely cited Europe-wide surveys conducted in 1995 and 1999 found that misuse of alcohol, tobacco and other drugs was higher among Irish school students than their European peers (Hibell et al 1997 and Hibell et al 2001). Reports on a national level have uncovered similarly alarming misuse patterns (see Jackson, 1997; Kiernan, 1995; Morgan and Grube, 1994; Grube and Morgan, 1990 and; Grube and Morgan, 1986).

Such research provides those tasked with addressing TAD misuse with a foundation of knowledge upon which policies can be formed and strategies implemented – a function most visibly reflected in the Department of Tourism, Sport and Recreation’s National Drugs Strategy 2001-2008, the rationale for which was firmly anchored in European and national survey statistics.

At the coal-face in tackling TAD related problems, the Garda Síochána has a similar requirement for current, reliable and valid data on misuse. Unfortunately national reports ‘may mask strongly diverging trends at regional or local level’ (EMCDDA, 2002, p.5) and as such do not necessarily provide the kind of information required by those, such as the Garda Síochána, tasked with addressing misuse on that level. Of potentially greater value is geo-specific research that provides decision-makers with an insight into the scale and nature of the problem within their areas.

The current research is illustrative of this need. The Chief Superintendents from Kerry and Waterford/Kilkenny Garda Divisions requested that the Garda Research Unit survey TAD misuse levels among second-level students in their areas. Both Community Relations and the Garda National Drugs Unit (GNDU) supported the proposal and gave comments on the methodology and survey instruments employed. Valuable comments were also provided by the Health Research Board.

Schools were randomly selected from both divisions and 3094 students from 31 schools and enrolled in either 2nd year of 5th year eventually participated in the survey.

In addition to serving as a feasibility study into more extensive research across the 25 Garda Divisions, the main objective of the research was to provide data to Chief Superintendents in the two divisions relating to:

- The prevalence of TAD misuse in each division;
- sources through which substances are obtained and environments in which they are consumed

- attitudes towards TAD misuse.

The report itself focuses on these core objectives. Less emphasis is placed on presenting a detailed review of the drugs problem in Ireland or indeed suggesting explanations for any trends that emerge from the data. Both were beyond the scope of the research. The latter, in particular, would require follow-up research, most likely in the form of qualitative interviewing. On the issue of literature reviews of past research and exhaustive overviews of the problem in Ireland, we recommend familiarisation with some of the excellent reports published to date and present only a brief overview of some of the core studies here.

Tobacco, alcohol and drug misuse in Ireland: A cursory overview of research

A large volume of literature exists on international and national trends in TAD misuse. On a European level, a study by the European School Survey Project on Alcohol and Other Drugs (ESPAD) found that 86 percent of Irish students between 15-16 years old had consumed an alcoholic drink in the previous year (Hibell et al 1997). Moreover, 66 percent of the sample had been drunk in the 12 months preceding the survey, 41 percent smoked in the prior 30 days and 31 percent had used cannabis. A similar survey conducted four years later found that the level of teenage drinking had actually increased, although there were decreases in smoking and cannabis misuse (Hibell et al 2001). For both surveys, TAD misuse by Irish students was higher than the European average.

A considerable amount of research has been generated that examines TAD misuse in Ireland (see in particular Grube and Morgan, 1986 and 1990; Kiernan, 1995; Jackson, 1997; Mid-Western Health Board, 1998; Morgan and Grube, 1994). For those studies dealing with post-primary students a worrying pattern emerges. In excess of 55 percent of respondents reported having smoked cigarettes at some stage in their lives, between 50 and 70 percent consumed an alcoholic drink and between 11 and 25 percent took drugs. In addition, consumption of tobacco, alcohol and drugs was higher for males and females and increased with age (see Mid-Western Health Board, 1998).

On a divisional level, in 1995 the Garda Research Unit surveyed second-level students between the ages of 15 and 19 in the Tipperary Garda Division (Heywood, 1996). 51 percent reported having smoked cigarettes and 61 percent had consumed alcohol in the 12 months preceding the survey. More than one in five (22%) claimed to have taken an illegal drug with cannabis (12%) hallucinogens (7%) and ecstasy (3%) being the most prominent substances misused. Three quarters of those who admitted taking drugs said they were obtained through a friend with 'dealers' being the other primary source (19%).

The Present Research

This report outlines similar research to that conducted by Heywood, but focusing on Kerry and Waterford/Kilkenny Divisions. The survey instrument employed is similar in many ways to that used in the Tipperary research with differences reflecting lessons learned then, advice from academics consulted before a final questionnaire was drafted and an examination of similar surveys used in more recent research. In the main, however, the surveys have a large degree of concordance thus facilitating comparison of results of the 1996 and 2002 studies.

On a second level, the current survey employed a far larger sample (n=3094) than in the earlier study (n=617) and indeed compares favourably with similar research

conducted by other agencies and organisations that have used smaller samples. This goes some way towards ensuring that results generated reflect actual misuse levels among post-primary students in the two divisions.

Finally, we would stress that tobacco, alcohol and drug misuse levels have the potential to vary over time and indeed across geographical location. As such there is a need to ensure that those involved in addressing the problem are continuously kept abreast of the actual extent of the problem at any one time and in any particular administrative or operational area. This research reflects both needs.

An outline of Chapters 2-6

Chapter 2 outlines the research methodology employed. In addition to presenting details relating to the sample employed, it introduces the questionnaire used and procedure adopted from selection of the schools to collection of the responses. It concludes with an outline of how raw data was cleaned, weighted and analysed.

Chapter 3 contains information relating to TAD misuse by all subjects surveyed (i.e. a combined sample of Waterford/Kilkenny and Kerry Divisions). It serves as a holistic overview of the prevalence and nature of consumption of tobacco, alcohol and drugs in rural and semi-rural environments and in doing so contributes to existing knowledge of misuse in Ireland in general. The chapter is divided into three main sections. Section 1 examines cigarette smoking by post-primary students with subsequent sections dealing with alcohol and drugs respectively.

Chapter 4 and Chapter 5 focus on TAD misuse in Kerry Division and Waterford/Kilkenny Divisions respectively. Both follow the same format as the previous chapter with sections devoted to cigarette smoking, alcohol consumption and drug misuse. Throughout the three 'results' chapters, data is presented that facilitates an examination of differing misuse patterns across gender (Male/Female) and age (2nd Years/5th Years).

A brief discussion of the main findings of the research, some comments on the methodology employed and tentative recommendations based on results, appear in Chapter 6.

Summary

Whilst there is quite a large amount of data available on tobacco, alcohol and drug misuse on a national and international level, few studies have been conducted that provide an insight into the situation on a county or divisional level. This research examines the phenomenon in Waterford/Kilkenny and Kerry Garda Divisions and simultaneously serves as a pilot study into the feasibility of conducting similar surveys across the 25 Garda Divisions.

CHAPTER 2

RESEARCH METHODOLOGY

Introduction

This chapter outlines the research methodology employed in the study and is presented in five sections. Section One outlines the procedure followed in generating the subject pool. The survey instrument used is introduced in Section Two and the procedure followed in its administration in Section Three. The final two sections deal with the reliability and validity of the approach adopted and analysis of the data yielded respectively.

Sample Selection

Schools selected for participation in the research were drawn from a list of all second-level institutions in the Waterford/Kilkenny and Kerry Divisions provided by the Department of Education and Science. From this list schools were selected to ensure the representativeness of the sample in terms of gender, school type (vocational, comprehensive and secondary), environment (rural/urban) and school size. Once schools were selected, 2nd year and 5th year classes, varying in pupil numbers, participated in the survey.¹

In total 3094 students from 31 schools participated in the survey. Following internal consistency assessments detailed later, 54 of this original sample were identified as having presented unreliable information and were eliminated from further analysis resulting in a final core sample group of 3040. Of these, 1715 attended schools in Waterford/Kilkenny Garda Division and 1325 in Kerry Division. 1591 were male and 1618 were female, with two subjects failing to record their gender. 1381 were enrolled as 5th year and 1618 as 2nd year students (with 39 not submitting responses).

Questionnaire Design

The survey employed drew on that used by Heywood (1996) in similar research conducted in Tipperary Garda Division and by the ESPAD (1999). As noted earlier, changes reflect lessons learned from its prior implementation and the need to ensure that more recent patterns in alcohol and drug misuse continue to be addressed. The 65 questions (or items) within the survey are further divided into four sections, each of which constitutes a core module (see Appendix B for questionnaire employed).

The core modules relate to:

- Information on the Respondent (5 questions): Sought responses relating to gender, age, hobbies, school attendance and academic performance.

¹ Desired sample sizes were calculated by estimating the total number of students in 2nd year and 5th year in each division and then ensuring that the proportion of each surveyed was sufficient for confident generalisations to be drawn. This was achieved by dividing the total number of students in each division by 5, yielding an approximate number of students in each school year. For example, with 15,555 enrolled in second level education in Waterford/Kilkenny Garda Division, we approximated that there were 3111 in 2nd year and the same number in 5th year. Statistically speaking, for a confidence level of 95% this required at least 346 2nd year and the 346 5th year pupils to be surveyed from that Division. Similar desired sample sizes were calculated for Kerry Garda Division. The final sample was significantly greater than the minimum because whole classes were sampled rather than selecting individual students.

- Cigarettes (2 questions): Examines number of occasions on which respondents smoked cigarettes and the frequency with which they did so over the 30 days preceding the survey's administration.
- Alcohol (18 questions): Asks respondent to record when, if ever, he/she first drank alcohol and the extent to which he/she does so now. Information was also sought on types of drinks consumed, environments in which consumption takes place and attitudes towards alcohol.
- Drug Misuse (28 questions): Examines the prevalence and nature of drug misuse, the environments in which they are taken, where they are obtained and underlying attitudes towards drugs in general.
- General background information (12 questions): Seeks information relating to school attended, home residential environment, family dynamics, victimisation and anti-social behaviour.

Constructs (or questions) relating to tobacco, alcohol and drug consumption permit an examination of general misuse for the total sample and across gender and school year. The central purpose of constructs that address background factors, conversely, is that they facilitate a second-level (or multivariate) examination of the relationship between various facets of the respondents' lives and their attitudes' towards, or use of TAD.

Data Collection

Three members of the Garda Research Unit administered the survey during March (Waterford/Kilkenny) and April (Kerry) 2002. The potential implications of using police officers in surveys of this nature are discussed later, but suffice it to note here that administrators attended in plain-clothes and stressed the confidentiality of the process.

The questionnaire was administered to 2nd and 5th year classes during one class period of 45 minutes duration. At the beginning of the class administrators introduced themselves, outlined the objectives of the survey and stressed that the process was voluntary and their responses confidential (pre-testing instructions were provided in written form on the first page of the survey and are included in Appendix C). The vast majority of respondents succeeded in completing the survey in the 45 minutes allotted and where extra time was required it was provided. Administrators clarified respondents' questions before, during and after the process and collected completed surveys at the end of the class.

When all respondents had been surveyed, forms were forwarded to an independent Dublin-based data management company, Data Conversion, who subsequently inputted responses into a file compatible with standard statistical software packages. The file was then forwarded to the Garda Research Unit for analysis.

Data Analysis

Data analysis took place in three stages, all of which made use of SPSS (Statistical Package for the Social Sciences).

Stage 1: Data Cleaning.

In Stage 1, analysts removed responses that, it was felt, were provided by students who deliberately over-stated their involvement in substance misuse. Questions 34, 39 and 41 surveyed students' knowledge and use of a variety of drugs. Among the drugs listed was 'relevin', a substance that does not actually exist and was included by survey designers to aid identification of such 'over-raters'.² Those who reported use or purchase of 'relevin' were omitted from the final sample pool.

Stage 2: Data Weighting.

The predictive utility of quantitative research is undermined when the subject sample employed fails to accurately reflect the population being examined. This can occur for a variety of reasons and lead to over-representations and under-representations across socio-economic class, gender, age or any other classifications that could be considered independent variables in the research being conducted. In cases where the subject sample profile does not accurately reflect that of the population being examined, a weighting procedure can be employed. Simply put, 'weighting' involves the use of a multiplier or multipliers that reduce over-representations (by a multiplier less than one) and increase under-representations (by a multiplier more than one). They are calculated by dividing the percentage representation of the Population Profile by that of the Sample Profile.

This research sampled complete school classes rather than selected individuals, which inevitably resulted in over and under representations. Weightings were calculated for gender and school type (secondary, comprehensive and vocational) in order to address these key aspects of the sample profile.³

Stage 3: Data Analysis.

The survey instrument was exhaustive and the data yielded offers an opportunity to examine various aspects of students' social realities and how they relate to TAD consumption. For the purposes of this report, however, we confined the analysis to an overview of the prevalence of use in each division and in the sample as a whole. For many of these constructs, results were also analysed across gender and school year. This, it was felt, would uncover the most prevalent patterns in TAD consumption, therefore attaining the objectives outlined earlier in the report.

To this end, items relating to TAD misuse, supply, consumption environments and related attitudes were subjected to analysis. In addition to deriving results for the student sample as a whole, data for comparing results across gender and school year were generated. Where differences are reported in the text of this report they are statistically significant and based, in the main, on Chi-square test results.

Results of the data analysis are presented in Chapter 3 and discussed in Chapter 4.

² Relevin was also included in q27 "have you ever heard of the following drugs". As relevin has been used in similar surveys in the past, however, it is at least possible that 'having heard' of the drug does not mean that respondents were 'over-rating'. As such no respondents were omitted from the sample pool on this basis.

³ The final sample was 52 percent male and 48 percent female. The actual profile of students in the two divisions, based on information provided by the Department of Education, is 47 percent male and 53 percent females. Weightings were calculated by dividing the actual profile percentage by the sample profile figure (ie. 47/52 (male weight) and 53/48 (female weight)). Similar weightings were calculated to account for under and over representations in school type (secondary, vocational and comprehensive). Finally a SPSS syntax code was written that combined all weightings and the data set was modified accordingly.

Reliability and Validity of the research findings

Whilst those involved in instrument design and administration procedures endeavour to promote reliability⁴ and validity⁵, none can claim to be confident that data generated is fully reliable or valid. In reality, different factors, beyond the control of the researcher, impact on the data gathering process and negatively impact on the representativeness of the data.

We are confident that the survey instrument employed is sufficiently reliable to ensure that generalisations can be made with confidence. In terms of 'instrument reliability', or the extent to which the survey 'works consistently' (Shaughnessy and Zechmeister, 1990, p.16), it is an improved version of that employed by Heywood (1996) and benefited from suggestions made by a number of informed and experienced advisors. Moreover, reports from the field suggest that respondents had no difficulty understanding the questions and completing the questionnaire.

Estimating 'test reliability' generally requires a test re-test research design that permits an examination of response-concordance from subjects who participate in the study on two occasions (i.e. consistency in responses between the two tests) – a procedure not used in the current research. Some indication of test reliability, however, can be gleaned from a comparison of findings across surveys that used similar constructs. Such a comparison is presented in Chapter 6. Suffice it to note here, however, that our core findings were largely concordant with those of Heywood (1996) and the Mid-Western Health Board (1998), lending support to the test reliability of this research.

We are also confident that a high level of validity (the extent to which the survey measures what it intends to measure) is enjoyed by this research. As mentioned above, over-raters were identified through the inclusion of a dummy drug 'relewin' and were excluded from further analysis. This said, it is rarely possible to categorically identify and exclude all examples over-rating.

A degree of underreporting is also likely. On one level, the problems associated with gathering accurate information on sensitive issues have been well debated, but are certainly linked to an unwillingness of subjects to report involvement in undesirable activities. Second, that subjects were aware that the research was being conducted by members of An Garda Síochána for use by that organisation will have done little to prompt those involved in illegal TAD use to truthfully report the extent of their involvement.

Some support for these observations is provided by responses to question 62 in the survey. The question asked respondents 'If you had ever used cannabis, do you think that you would have said so in this questionnaire?' 15 percent report that they definitely (10%) or probably (5%) would not do so.

⁴ 'Reliability' relates to consistency. There are a number of different forms of reliability but in the context of this discussion we are concerned with just two, consistency of findings when a survey is repeatedly administered (test reliability) and consistency with which an instrument appears to work (instrument reliability).

⁵ 'Validity' refers to the extent to which an instrument 'measures what it claims to measure' (Shaughnessy and Zechmeister, 1990, p.16). In some cases badly phrased questions may confuse the respondent and thus minimise the validity of the response.

Table 2.1: If cannabis had been taken, would respondent say so in the survey?

| Response | Count | % |
|---|-------|-----|
| I have already said that I have used it | 601 | 22 |
| Definitely yes | 1042 | 38 |
| Probably yes | 713 | 26 |
| Probably not | 137 | 5 |
| Definitely not | 265 | 10 |
| Total | 2757 | 100 |

With the exception of the ESPAD survey (1999), this question was not posed in previous research and as such it is unclear whether the unwillingness to report such activity is a feature of research involving sensitive topics in general or reflects police involvement in the survey in particular. One would suspect, however, that a certain level of underreporting is present in most surveys of this nature, but is particularly marked when subjects associate a certain level of risk with honesty – as may be the case here.

Summary

A subject pool of 3094 second-level school students that were broadly representative of students in Waterford/Kilkenny and Kerry Garda Divisions was generated. The survey instrument used in the research was comprised of 65 items that covered a range of TAD related issues as well as background information on the respondent and was completed by students in the two divisions in March and April 2002. Completed questionnaires were forwarded to a data-inputting company that subsequently inputted responses into a file compatible with standard statistical software packages. The data set was then analysed by the Garda Research Unit and results are presented in the following chapters.

CHAPTER 3
TOBACCO, ALOCHOL AND DRUG USE – FULL SAMPLE

Introduction

This chapter presents an overview of research findings based on an analysis of responses from all students surveyed. In doing so it contributes to an overall appreciation of the levels of misuse in rural and semi-urban environments in Ireland. Results are provided in three main sections, dealing with tobacco, alcohol and drug use respectively. Additional tables, for constructs not addressed in this chapter, appear in Appendix 4.

Before presenting results relating to tobacco use, two observations, that are equally relevant for subsequent sections on alcohol and drug misuse and indeed the chapters containing divisional information, have an important bearing on the way that data should be interpreted. First, not all those who report having used tobacco, alcohol or drugs in the past can be labelled 'smokers', 'drinkers' or 'drug users'. In reality teenagers experiment with a range of behaviours, many of which fail to become established as ones of routine. Thus one would expect a large percentage of respondents to have smoked in the past, but much fewer who can objectively be considered 'smokers'. Second, when respondents are asked to report levels of misuse over the course of their life-time, results are not an accurate reflection of the extent of the problem at one particular point in time. It is important to differentiate between those who currently smoke, for instance, and those who did so for a period in the past. Failing to do so may cause skewing of prevalence levels towards the high-misuse end of any construct.

Smoking Cigarettes

Tables 3.01 and 3.02, below, outline survey results relating to 'the number of occasions on which respondents smoked during their life-time' and 'the number of cigarettes smoked in the last 30 days' respectively. The general picture that emerges is that whilst a large number of students have smoked in the past (59%), fewer do so on a weekly basis (24%) (i.e. could be said to be regular smokers). One in five (20%) smoked more than one cigarette a day during the previous month.

Table 3.01: Number of occasions on which respondents smoked.

| Occasions | 2 nd Year | 5 th Year | Male | Female | All Students |
|------------|----------------------|----------------------|------|--------|--------------|
| | % | % | % | % | % |
| 0 | 49 | 33 | 46 | 37 | 41 |
| 1-2 | 19 | 15 | 17 | 17 | 17 |
| 3-5 | 7 | 8 | 6 | 8 | 7 |
| 6-9 | 5 | 5 | 4 | 6 | 5 |
| 10-19 | 5 | 6 | 4 | 6 | 5 |
| 20-39 | 3 | 4 | 4 | 4 | 4 |
| 40 or more | 12 | 30 | 19 | 22 | 21 |
| Total | 100 | 100 | 100 | 100 | 100 |

Table 3.02: Number of cigarettes smoked during last 30 days.

| No. of cigarettes smoked during last thirty days | 2 nd Year | 5 th Year | Male | Female | All Students |
|--|----------------------|----------------------|------|--------|--------------|
| | % | % | % | % | % |
| Not at all | 75 | 62 | 73 | 66 | 69 |
| Less than 1 cigarette per week | 8 | 8 | 6 | 10 | 8 |
| Less than one cigarette per day | 3 | 4 | 3 | 4 | 4 |
| More than one cigarette a day | 15 | 28 | 19 | 21 | 20 |
| Total | 100 | 100 | 100 | 100 | 100 |

In terms of gender, females (22%) were more likely to have smoked on 40 occasions or more during their life-time than were males (19%) and were less likely to have abstained from smoking during that time (female = 37%, male = 46%).

Predictably, more 5th years (30%) than 2nd years (12%) have smoked on 40 occasions or more and fewer have never smoked (5th year = 33%, 2nd year = 49%). Similarly, fewer 2nd years reporting smoking on a daily basis (15%) than 5th years (28%).

Alcohol Consumption.

Overview of findings.

Considerably more constructs in the survey instrument dealt with aspects of alcohol consumption. In terms of an overview of the results, 77 percent of respondents reported having consumed alcohol at some stage in their lives. Fifty five percent drank in the 30 days preceding the survey and 39 percent had been drunk. Whilst the volume of alcohol required to get drunk varied widely, almost 60 percent reported that they required between 3 and 8 drinks to reach that state. More than half (56%) reported spending two or more successive days drinking on at least one occasion in the past year. Again somewhat predictably, 5th years were more prolific drinkers than 2nd years.

Extent of Alcohol Consumption.

Table 3.03 presents data relating to the number of occasions on which respondents consumed alcohol. Less than one in four students (23%) reported abstaining from alcohol throughout their lifetime with a further 14 percent stating that they engaged in that activity on just one or two occasions. One quarter of respondents (25%) reported that they consumed alcohol on 40 occasions or more with 45 percent doing so on more than 10 occasions.

As expected, 2nd year students are both more likely to abstain from alcohol consumption and less likely to drink frequently than 5th years. Thirty four percent of the former reported having never consumed alcohol in comparison to ten percent of the latter. Moreover, 45 percent of 5th year students reported drinking on 40 occasions or more and 72 percent on 10 occasions or more, in stark contrast to results generated from 2nd year respondents who were more likely to have consumed alcohol on less than ten occasions.

Table 3.03: Number of occasions (throughout life) during which respondents consumed alcohol

| Occasions | 2 nd Year | 5 th Year | All Students |
|------------|----------------------|----------------------|--------------|
| | % | % | % |
| 0 | 34 | 10 | 23 |
| 1-2 | 21 | 5 | 14 |
| 3-5 | 13 | 6 | 10 |
| 6-9 | 10 | 7 | 9 |
| 10-19 | 9 | 12 | 10 |
| 20-39 | 5 | 15 | 10 |
| 40 or more | 8 | 45 | 25 |
| Total | 100 | 100 | 100 |

Drinking behaviour over the 30 days preceding the survey was also assessed. More than half (55%) those surveyed reported that they had consumed alcohol at least once during that time. Females (56%) were slightly more likely to have done so than were males (54%) and 5th Years (77%) more so than 2nd Years (34%).

Table 3.04: Number of occasions over past 30 days on which alcohol was consumed.

| Alcohol consumed in last thirty days | 2 nd Year | 5 th Year | Male | Female | All Students |
|--------------------------------------|----------------------|----------------------|------|--------|--------------|
| | % | % | % | % | % |
| Once or more | 34 | 77 | 54 | 56 | 55 |
| None | 66 | 23 | 46 | 44 | 45 |
| Total | 100 | 100 | 100 | 100 | 100 |

When asked to report the number of times over the 30 days preceding the survey that they had been drunk, 39 percent admitted being so on one occasion or more and 16 percent on three occasions or more. Whilst 77 percent of 2nd years reported that they had not been drunk in this period it is nevertheless of some concern that seven percent were so on three or more occasions. 5th years admitted to being drunk considerably more often with 52 percent reporting being drunk at least once in the previous 30 days. Females (42%) were significantly more likely to have been drunk during this time frame than were males (36%).

Table 3.05: Occasions over last thirty days respondent drunk

| Drunk in last thirty days | 2 nd year | 5 th Year | Male | Female | All Students | |
|---------------------------|----------------------|----------------------|------|--------|--------------|------|
| | % | % | % | % | % | n. |
| 0 | 77 | 48 | 64 | 58 | 61 | 1180 |
| 1-2 | 15 | 30 | 21 | 26 | 24 | 457 |
| 3-5 | 4 | 14 | 9 | 10 | 10 | 186 |
| 6-9 | 2 | 4 | 3 | 3 | 3 | 59 |
| 10-19 | 1 | 2 | 2 | 2 | 2 | 36 |
| 20-39 | 0 | 1 | 1 | 1 | 1 | 12 |
| 40 or more | 0 | 0 | 0 | 0 | 0 | 4 |
| Total | 100 | 100 | 100 | 100 | 100 | 1934 |

Those who admitted drinking were asked to record the number of alcoholic drinks it would take to become drunk. The majority of these respondents (59%), regardless of gender or school year, require between 3 and 8 alcoholic drinks to get drunk. Those who claim to require more than this amount have either built up a considerable tolerance over extended periods of drinking or have exaggerated their responses (i.e. are 'over-raters').

More than one in four (27%) of those who admitted drinking in the past had never been drunk suggesting that at least some students drink alcohol in moderation. It is difficult to draw inferences from data across gender as it is at least plausible that females and males consume different kinds of alcoholic drink that vary in alcohol concentration. Similarities in data, thus, may reflect a preference for low-alcoholic drink in the sample that, should alcohol concentration be controlled, would actually require a lower volume to get drunk.

Table 3.06: Number of drinks required by those who admitted drinking to get drunk

| Number of drinks to be drunk | 2 nd year | 5 th Year | Male | Female | All Students | |
|------------------------------|----------------------|----------------------|------|--------|--------------|------|
| | % | % | % | % | % | n. |
| Never drunk | 42 | 13 | 27 | 26 | 27 | 648 |
| 1-2 drinks | 6 | 2 | 3 | 4 | 4 | 90 |
| 3-4 drinks | 17 | 14 | 13 | 18 | 16 | 380 |
| 5-6 drinks | 20 | 31 | 25 | 26 | 26 | 623 |
| 7-8 drinks | 10 | 24 | 19 | 16 | 17 | 416 |
| 9-10 drinks | 3 | 10 | 8 | 6 | 7 | 163 |
| 11-12 drinks | 1 | 3 | 2 | 2 | 2 | 59 |
| 13 drinks or more | 2 | 2 | 3 | 1 | 2 | 52 |
| Total | 100 | 100 | 100 | 100 | 100 | 2429 |

Respondents were asked to rate the extent to which they were drunk the last time they consumed alcohol, with a ranking of one corresponding to feeling 'somewhat merry' and 10 being 'unable to stand'. Six percent of those who admitted drinking alcohol reported that they had been drunk to the extent that they could not stand and 68 percent were drunk beyond what they considered to constitute 'somewhat merry'.

Table 3.07: Scale of drunkenness of respondents (who admitted drinking) last time they were drunk

| Scale | 2 nd year | 5 th Year | Male | Female | All Students | |
|---------------------|----------------------|----------------------|------|--------|--------------|------|
| | % | % | % | % | % | n. |
| Somewhat merry only | 9 | 4 | 6 | 6 | 6 | 126 |
| 2 | 5 | 7 | 6 | 6 | 6 | 125 |
| 3 | 7 | 10 | 10 | 8 | 9 | 187 |
| 4 | 7 | 11 | 9 | 9 | 9 | 194 |
| 5 | 7 | 13 | 9 | 12 | 10 | 216 |
| 6 | 6 | 12 | 10 | 8 | 9 | 187 |
| 7 | 6 | 11 | 10 | 8 | 9 | 184 |
| 8 | 4 | 8 | 5 | 7 | 7 | 138 |
| 9 | 2 | 4 | 3 | 3 | 3 | 60 |
| Unable to stand | 5 | 7 | 5 | 6 | 6 | 127 |
| Never been drunk | 43 | 13 | 26 | 27 | 26 | 551 |
| Total | 100 | 100 | 100 | 100 | 100 | 2097 |

Nature of Consumption: Sources, Environments and Attitudes

It is of concern that 44 percent of those surveyed had drunk spirits in the month preceding the survey. Slightly less drank beer (42%), alcopops (41%), cider (34%) and wine (28%). Fifteen percent reported drinking spirits on six occasions or more.

Table 3.08: Breakdown of alcoholic beverages consumed by respondents over month preceding survey.

| Occasions | Beer | Wine | Spirits | Cider | Alcopops |
|-----------|------|------|---------|-------|----------|
| | % | % | % | % | % |
| 0 | 58 | 72 | 56 | 66 | 59 |
| 1-2 | 19 | 18 | 19 | 15 | 18 |
| 3-5 | 10 | 5 | 10 | 8 | 11 |
| 6 or more | 14 | 4 | 15 | 10 | 13 |
| Total | 100 | 100 | 100 | 100 | 100 |

Respondents were asked to identify the last environment in which they consumed alcohol. Public houses (25%), family home (24%) and other family residences (19%) were the primary drinking environments that emerge from the data with public areas (13%) and discos (10%) forming the other key locations. Overall it would appear that a large proportion of teenage drinking that occurs outside private residences, takes place in licensed premises, either public houses or discos.

Table 3.09: Environment in which last alcoholic beverage was consumed.

| Location When Last Drank Alcohol | % |
|--|-----|
| At a bar or a pub | 25 |
| At home | 24 |
| At someone else's home | 19 |
| Out on the street, in a park, beach or other open area | 13 |
| In a disco | 10 |
| Other | 7 |
| Restaurant | 2 |
| Total | 100 |

Information relating to the source of the drink purchased largely mirrors the environments in which it was consumed and any apparent inconsistencies reflect the reality that, in some cases at least, students obtain alcohol in one environment (at home for example) and consume it in another (pub or public place). Over one quarter (27%) of alcohol consumed by students on the most recent occasion preceding the survey was obtained at home, 18 percent with permission and nine percent without (see Table 3.10).

Table 3.10: Source of drink consumed on last occasion

| Source | % |
|------------------------------|-----|
| I bought it in a pub/disco | 30 |
| From friends | 29 |
| Home, with permission | 18 |
| Home, without permission | 9 |
| Off-licence | 8 |
| Other (please describe) | 5 |
| I bought it in a supermarket | 2 |
| Total | 100 |

Respondents were asked to agree or disagree with four assertions posed in the survey (see Table 3.11). The first suggested that alcohol is easily obtained and 60 percent stated that they either agreed (40%) or strongly agreed (20%) with a further 19 percent being unsure. Almost two thirds (64%) agreed or strongly agreed that ‘a lot of young people drink alcohol to keep up with their friends’ and more than three quarters (76%) agreed or strongly agreed that ‘drinking alcohol can be harmful’ to one’s health. Conversely, 44 percent disagreed (31%) or strongly disagreed (13%) with the assertion that drinking makes people feel bad with just 19 percent agreeing or strongly agreeing.

Table 3.11: Level of agreement with assertions that: a) Drink is easy to obtain; b) that many young people drink to keep up with their friends; c) that drink is harmful to their health and; d) that it makes people feel bad

| Agree or Disagree | Easy to obtain | Friend pressure to drink | Harmful to health | Makes you feel bad |
|---------------------------|----------------|--------------------------|-------------------|--------------------|
| | % | % | % | % |
| Strongly agree | 20 | 26 | 35 | 8 |
| Agree | 40 | 38 | 41 | 11 |
| Neither agree or disagree | 19 | 16 | 16 | 37 |
| Disagree | 16 | 15 | 5 | 31 |
| Strongly disagree | 4 | 5 | 2 | 13 |
| Total | 100 | 100 | 100 | 100 |

Drug Misuse and Drug-related Attitudes.

Overview of findings.

A large number of questions were asked that sought information from respondents relating to the prevalence of and attitudes towards drug misuse. Of some concern are results that suggest that almost a quarter (23%) of respondents surveyed had used drugs at some stage during their life-time and that 29 percent had ‘wanted to try’ them. Cannabis emerges as the most prominent drug available to and used by teenagers. Most misusers are supplied by friends and take drugs in public environments or in the homes of friends. 25 percent report that they received no drugs related education from school. Males are more prevalent drug misusers than are females and 5th Years more so than 2nd Years.

Prevalence of misuse.

Almost a quarter (23%) of all students surveyed reported having taken drugs at some stage in their lives. 32 percent of 5th year respondents and 15 percent of 2nd years had used drugs. Differences also emerged across gender with male students (25%) engaging in higher levels of drug misuse than female students (21%).

In relation to desire to take drugs, it is interesting to note that more students said that they had ‘wanted to try’ drugs (29%) than have actually taken them. Across age groups, wanting to try drugs significantly increases with age - 21 percent of 2nd years and 37 percent of 5th years reported this desire.

Finally, more than four in every ten respondents (42%) stated that they had been offered drugs at some stage in the past. Gender and age effects emerge from the survey with males (44%) more likely to have been offered drugs than females (40%) and 5th years (57%) more than 2nd years (29%).

Table 3.12: Percentage of respondents who have taken, 'ever wanted to try' or been offered drugs in the past

| | 2 nd Year | 5 th Year | Male | Female | All Students |
|--------------------------------|----------------------|----------------------|------|--------|--------------|
| | % | % | % | % | % |
| Have taken drugs. ⁶ | 15 | 32 | 25 | 21 | 23 |
| Ever wanted to try drugs | 21 | 37 | 29 | 28 | 29 |
| Have been offered drugs | 29 | 57 | 44 | 40 | 42 |

Almost nine out of ten (89%) drug misusers reported that cannabis was the first drug they had tried. A small number (4%) did not know what they had used and fewer still used magic mushrooms (2%), ecstasy (1%) or crack (1%). When examined by school year and gender the dominance of cannabis as a first-time misuse substance remains. 5th years were more likely to have experienced cannabis as their first drug than 2nd years but across gender there was no statistically significant difference.

Table 3.13: First drug tried by those who have taken drugs

| Drugs first taken | 2 nd Year | 5 th Year | Male | Female | All Students | |
|-----------------------------|----------------------|----------------------|------|--------|--------------|-----|
| | % | % | % | % | % | n. |
| Cannabis | 79 | 94 | 90 | 87 | 89 | 619 |
| I don't know what it was | 10 | 1 | 3 | 6 | 4 | 31 |
| Magic mushrooms | 3 | 2 | 3 | 2 | 2 | 15 |
| Tranquillisers or sedatives | 4 | 1 | 1 | 2 | 2 | 12 |
| Crack | 4 | 0 | 2 | 0 | 1 | 10 |
| Ecstasy | 0 | 1 | 0 | 1 | 1 | 6 |
| LSD | 0 | 0 | 0 | 1 | 0 | 3 |
| Heroin | 0 | 0 | 0 | 0 | 0 | 1 |

When TAD misuse during life-time is examined, cannabis remains the drug most widely and most frequently used. Ninety four percent of all those who admitted taking drugs stated that they had taken cannabis at some stage. With the exception of LSD (11%) less than ten percent of drug takers had taken any other substance. In terms of frequency of misuse, 15 percent of users had taken cannabis on 40 occasions or more. In contrast, less than three percent had taken any other substance listed below on three or more occasions.

Table 3.14: Type of drugs misused and frequency of use during life according to respondents who admitted drug use

| Drug | Number of occasions drug used | | | | | | |
|---------------------|-------------------------------|-----|-----|-----|-------|-------|------|
| | 0 | 1-2 | 3-5 | 6-9 | 10-19 | 20-39 | 40 + |
| | % | % | % | % | % | % | % |
| Tranquillisers | 92 | 5 | 2 | 1 | 0 | 0 | 0 |
| Marijuana | 6 | 35 | 15 | 9 | 12 | 8 | 15 |
| LSD | 89 | 7 | 2 | 1 | 1 | 1 | 0 |
| Crack | 93 | 4 | 2 | 1 | 0 | 0 | 0 |
| Cocaine | 93 | 4 | 1 | 1 | 0 | 0 | 0 |
| Heroin by smoking | 94 | 3 | 1 | 1 | 0 | 0 | 0 |
| Heroin by injection | 98 | 1 | 0 | 0 | 0 | 0 | 0 |
| Ecstasy | 84 | 9 | 2 | 2 | 1 | 1 | 1 |
| Amphetamine | 94 | 2 | 1 | 0 | 1 | 0 | 0 |

⁶ Data in this table is derived from q38 "where did you take drugs last time" in the questionnaire. The percentage of those who stated "I have never taken drugs" was subtracted from 100% to give a figure for those who had taken drugs. The results were consistent with similar responses in q35 and q37.

In order to identify stages in the second-level education cycle when onset of drug misuse is most likely to occur, 5th year respondents who admitted taking one or a range of drugs were asked to record their age when misuse of each began.⁷ Age 15 emerged as the age when cannabis (32%), LSD (43%), magic mushrooms (43%) and cocaine (27%) misuse is most likely to begin. For ecstasy this increases to age 16.

Table 3.15: Age when 5th Year students first used each of the following

| Age | Cannabis | LSD | Ecstasy | Heroin | Cocaine | Mushrooms |
|----------------|----------|-----|---------|--------|---------|-----------|
| | % | % | % | % | % | % |
| Age 11 or less | 3 | 3 | 0 | 0 | 11 | 11 |
| 12 | 3 | 0 | 0 | 7 | 0 | 0 |
| 13 | 8 | 3 | 8 | 16 | 1 | 8 |
| 14 | 22 | 13 | 13 | 34 | 13 | 8 |
| 15 | 32 | 43 | 32 | 16 | 27 | 43 |
| 16 | 27 | 26 | 35 | 21 | 23 | 26 |
| 17 | 4 | 12 | 10 | 5 | 26 | 3 |
| 18 | 0 | 0 | 2 | 0 | 0 | 0 |
| N | 414 | 56 | 73 | 23 | 32 | 64 |

When asked to record when they last took drugs, 21 percent of all misusers stated that they had not done so in the previous year. In contrast, almost one in five (19%) misusers took drugs in the 'few days' preceding the survey's administration, an additional nine percent did so within the previous two weeks and 12 percent in the previous month. On a cumulative level, therefore, 40% of users reported having taken drugs at some stage in the month preceding the survey. The remaining 39 percent did so within the three months (11%), six months (11%), nine months (4%) or one year (13%) time frame.

Table 3.16: When last drug was taken.

| Occasion. | All Students | All Students Cumulative | All Students |
|------------------------------|--------------|-------------------------|--------------|
| | % | % | N |
| Not within the last year | 21 | -- | 148 |
| Within the last few days | 19 | 19 | 134 |
| Within the last two weeks | 9 | 28 | 67 |
| Within the last month | 12 | 40 | 85 |
| Within the last three months | 11 | 51 | 79 |
| Within the last six months | 11 | 62 | 81 |
| Within the last nine months | 4 | 66 | 30 |
| Within the last year | 13 | 79 | 90 |

Seven percent of all students surveyed reported that they had used more than one drug on the same occasion at least once in the past. Five percent did so on one occasion, one percent 'frequently' and the remainder (1%) claim to engage in polydrug use 'always'.

⁷ 5th years can report beginning misuse at any age within the general age profile of respondents (approximately 12-18) whereas 2nd years (aged 12-13 approx.) cannot. The consequence of using the 2nd years in this construct would be the skewing of the results towards earlier drug-misuse onset and thus they were omitted from the analysis.

Table 3.17: Times when respondents used more than one drug on same occasion

| Occasions | 2 nd Year | 5 th Year | Male | Female | All Students |
|---------------|----------------------|----------------------|------|--------|--------------|
| Never | 95 | 91 | 93 | 94 | 93 |
| Once or twice | 4 | 6 | 6 | 4 | 5 |
| Frequently | 1 | 2 | 1 | 1 | 1 |
| Always | 0 | 1 | 0 | 1 | 1 |
| Total | 100 | 100 | 100 | 100 | 100 |

Nature of Drug Misuse: Drug taking environments and perceptions towards misuse

Eighty-four percent of all misusers received their first drug from friends. Fewer were supplied by a stranger (7%) or older sibling (6%). 88 percent of 5th year respondents received drugs from friends and the prevalence of this source as supplier to first time users is evident across age group and gender.

Table 3.18: How first drug was obtained

| | 2 nd year | 5 th Year | Male | Female | All Students | |
|--------------------------|----------------------|----------------------|------|--------|--------------|-----|
| | % | % | % | % | % | n. |
| Friend | 75 | 88 | 82 | 84 | 84 | 567 |
| Given by stranger | 14 | 5 | 11 | 5 | 7 | 51 |
| Older brother or sisters | 6 | 5 | 3 | 8 | 6 | 38 |
| None of the these | 0 | 0 | 4 | 3 | 4 | 26 |
| Parent(s) | 6 | 3 | 0 | 0 | 0 | 0 |
| Total | 101 | 101 | 101 | 100 | 100 | 682 |

Similarly, when asked to record the source of drugs taken on the most recent occasion, most misusers reported that they were obtained through a friend (70%) with other sources, such as dealers (18%) or siblings (3%) emerging from the data as alternative suppliers. Again this pattern remains when the data is examined at 'gender' and 'school year' level.

Table 3.19: How drugs were obtained on last occasion

| Where obtained | 2 nd year | 5 th Year | Male | Female | All Students | All Students |
|-----------------|----------------------|----------------------|------|--------|--------------|--------------|
| | % | % | % | % | % | n. |
| Friend | 58 | 76 | 68 | 73 | 70 | 475 |
| Dealer/Supplier | 25 | 15 | 22 | 14 | 18 | 122 |
| Other | 13 | 6 | 8 | 9 | 8 | 56 |
| Brother/sister | 4 | 3 | 2 | 4 | 3 | 21 |

On the last occasion that drugs were taken, most misuse took place in the homes of friends (27%), on the street (21%) or in a park/beach or other public area (22%). A smaller percentage reported taking drugs in their own house (8%) or in a club or disco (11%). The prevalence of 'friend's house', 'street' or 'park, beach or other public area' as key environments for drug misuse remain when the data is examined by gender or age.

Table 3.20: Where drugs were taken on last occasion

| Location | 2nd year | 5 th Year | Male | Female | All Students | All Students |
|--------------------------------|----------|----------------------|------|--------|--------------|--------------|
| | % | % | % | % | % | n. |
| Friend's house | 19 | 32 | 24 | 31 | 27 | 185 |
| Park, beach, other public area | 18 | 24 | 23 | 21 | 22 | 151 |
| Street | 26 | 18 | 22 | 19 | 21 | 139 |
| Club/Disco | 11 | 10 | 10 | 12 | 11 | 72 |
| Other place (please specify) | 13 | 5 | 9 | 6 | 8 | 53 |
| Your own house | 11 | 6 | 9 | 6 | 8 | 53 |
| Pub | 2 | 2 | 1 | 3 | 2 | 14 |
| Concert | 1 | 2 | 2 | 1 | 2 | 12 |

Fifty seven percent of drug users felt that it would be either very easy (30%) or fairly easy (27%) to obtain cannabis. A smaller number believe that it is very easy or fairly easy to obtain ecstasy (38%) or magic mushrooms (39%). Heroin, LSD and cocaine appear to be the most difficult substances to obtain.

Table 3.21: Difficulty associated with getting a variety of different drugs according to users

| Drugs | Not possible | Very difficult | Fairly difficult | Fairly easy | Very easy | Don't know |
|-----------------|--------------|----------------|------------------|-------------|-----------|------------|
| | % | % | % | % | % | % |
| Cannabis | 7 | 6 | 19 | 27 | 30 | 10 |
| LSD | 10 | 14 | 25 | 14 | 8 | 29 |
| Ecstasy | 9 | 12 | 18 | 20 | 18 | 23 |
| Heroin | 13 | 19 | 22 | 9 | 8 | 28 |
| Cocaine | 9 | 17 | 24 | 13 | 10 | 28 |
| Magic mushrooms | 9 | 10 | 19 | 22 | 17 | 23 |

Of those who admitted drug misuse, most reported that they were motivated out of curiosity (61%). The induced 'high' formed the second main motivating force behind misuse (28%). Ten percent reported that a desire to forget personal problems and nine percent 'boredom' as important factors. Females (66%) were more likely to take drugs out of curiosity than were males (56%) and 5th Years (67%) more so than 2nd Years (48%). Conversely, males (31%) were more driven to attain a 'high' than were females (23%) and 2nd Years (37%) more so than 5th Years (23%).

Table 3.22: Reasons why drugs were used⁸

| Reason | 2 nd Year | 5 th Year | Male | Female | All students | |
|---|----------------------|----------------------|------|--------|--------------|-----|
| | % | % | % | % | % | n. |
| Curiosity | 48 | 67 | 56 | 66 | 61 | 375 |
| To feel high | 37 | 23 | 31 | 23 | 27 | 170 |
| To forget my problems | 15 | 6 | 8 | 11 | 9 | 57 |
| I was bored | 9 | 9 | 8 | 11 | 9 | 56 |
| Wanted to be same as others | 6 | 6 | 7 | 4 | 6 | 36 |
| Other reasons | 4 | 3 | 3 | 3 | 3 | 20 |
| I don't remember | 2 | 3 | 32 | 3 | 3 | 17 |
| never used any of the substances listed | 3 | 0 | 1 | 2 | 1 | 7 |

⁸ Respondents were asked to 'select all that apply' to this question. Totals do not add up to 100% as figures reflect multiple response questions.

Drugs-related Education

One quarter of respondents reported that they had never received information on drugs in the school environment. A further 42 percent suggested that either a lot more (24%) or a little more (18%) information should be provided to supplement what they see as an inadequate level of drugs-related education. The remainder were either happy with the level of tuition provided (27%) or 'did not know' (6%).

Table 3.23: School drug education by school year

| Level of information provided | 2 nd Year | 5 th Year | All Students |
|----------------------------------|----------------------|----------------------|--------------|
| | % | % | % |
| Enough Information given | 23 | 30 | 27 |
| A little more information needed | 19 | 17 | 18 |
| A lot more information needed | 25 | 23 | 24 |
| No information given | 24 | 26 | 25 |
| Don't know | 8 | 5 | 6 |
| Total | 100 | 100 | 100 |

Just 39 percent of respondents remember receiving information on drug use from sources outside the school environment. When examined by school year, 2nd year students (42%) report receiving more information about alcohol and drugs from outside school sources than 5th year students (35%).

Table 3.24: Information given outside of school

| Information given outside of school | 2 nd Year | 5 th Year | Overall Total |
|-------------------------------------|----------------------|----------------------|---------------|
| | % | % | % |
| Yes | 42 | 35 | 39 |

Conclusion.

As noted earlier, the survey instrument used in this research probed for information relating to a large and diverse number of constructs. This chapter has addressed only those items in the questionnaire that offer key insights into the nature and extent of TAD misuse among post-primary students in the Waterford/Kilkenny and Kerry Divisions. Tables relating to additional constructs have been consigned to Appendix 4, yet in their own right they are of considerable value for those interested in a more holistic appreciation of TAD use.

Generally speaking, the information presented in this chapter illustrates that tobacco, alcohol and drug consumption levels among second-level students are high. Twenty four percent of students smoke on a weekly basis. Forty-five percent of 5th Years and 8 percent of 2nd Years have consumed alcohol on 40 occasions or more during their lives. Twenty-three percent of all those surveyed had taken drugs, a figure that rose to 32 percent when 5th Years were examined in isolation. It is reasonable to assume that by the conclusion of second-level school education, one in three students will have taken drugs, almost half will have consumed alcohol and more than one in five will be, or will have been, 'smokers'.

CHAPTER 4
TOBACCO, ALOCHOL AND DRUG USE IN WATERFORD/KILKENNY GARDA
DIVISION.

Introduction

This chapter presents an overview of research findings based on an analysis of responses from students surveyed in the Waterford/Kilkenny Garda Division. As in the previous chapter results are in three main sections, dealing with tobacco, alcohol and drug misuse respectively.

Smoking Cigarettes

Tables 4.01 and 4.02, below, contain information relating to the ‘number of occasions on which respondents smoked during their lives’ and the number of occasions they did so over the 30 days preceding the survey respectively. Almost six in ten (58%) had smoked at some stage in their lives, but much fewer (33%) had done so in previous 30 days. In terms of regular smokers, 22 percent had smoked on 40 occasions or more during their lives and 26 percent at least once a week over the past month.

Again females were less likely to have abstained from smoking throughout their lives (F=38%, M=45%) and were more likely to have done so over the preceding 30 days (F=36%, M=30%). In the region of seven in ten (69%) 5th years had smoked during their lives and 33 percent had done so at least once a week in the preceding 30 days. Half of the 2nd years had experience of smoking, 13 percent on 40 occasions or more. 19 percent had smoked at least once a week in the month prior to the survey’s administration.

Table 4.01: Number of occasions on which respondents smoked.

| Occasions | 2 nd Year | 5 th Year | Male | Female | All Students |
|------------|----------------------|----------------------|------|--------|--------------|
| | % | % | % | % | % |
| 0 | 50 | 31 | 45 | 38 | 42 |
| 1-2 | 17 | 14 | 15 | 16 | 16 |
| 3-5 | 7 | 7 | 5 | 8 | 7 |
| 6-9 | 5 | 5 | 4 | 5 | 5 |
| 10-19 | 5 | 6 | 4 | 6 | 5 |
| 20-39 | 4 | 4 | 4 | 4 | 4 |
| 40 or more | 13 | 34 | 21 | 23 | 22 |
| Total | 100 | 100 | 100 | 100 | 100 |

Table 4.02: Number of cigarettes smoked during last thirty days

| No. of cigarettes smoked during last 30 days | 2 nd Year | 5 th Year | Male | Female | All Students |
|--|----------------------|----------------------|------|--------|--------------|
| | % | % | % | % | % |
| Not at all | 73 | 58 | 70 | 64 | 67 |
| Less than 1 cigarette per week | 8 | 8 | 5 | 10 | 8 |
| less than one cigarette per day | 4 | 4 | 4 | 4 | 4 |
| 1-5 cigarettes per day | 7 | 10 | 8 | 9 | 9 |
| 6-10 cigarettes per day | 5 | 12 | 9 | 7 | 8 |
| 11-20 cigarettes per day | 2 | 6 | 3 | 4 | 4 |
| More than 20 cigarettes per day | 1 | 1 | 1 | 1 | 1 |
| Total | 100 | 100 | 100 | 100 | 100 |

Alcohol Consumption

Extent of Alcohol Consumption

Tables 4.03 and 4.04, dealing with alcohol consumption throughout respondents' life and in the 30 days preceding the survey's administration respectively, provide a good overview of the extent of the problem in second-level schools in Waterford/Kilkenny Garda Division. Almost eight in ten (79%) students had taken a whole drink at some stage in the past, but considerably fewer (43%) had done so in the preceding 30 days.

Table 4.03: Number of occasions (throughout life) during which respondent consumed alcohol

| Occasions | 2 nd Year | 5 th Year | All Students. |
|------------|----------------------|----------------------|---------------|
| | % | % | % |
| 0 | 33 | 7 | 21 |
| 1-2 | 21 | 5 | 13 |
| 3-5 | 13 | 5 | 10 |
| 6-9 | 11 | 5 | 8 |
| 10-19 | 9 | 11 | 10 |
| 20-39 | 5 | 15 | 9 |
| 40 or more | 9 | 51 | 28 |

Just seven percent of 5th years had never consumed alcohol and 80 percent had done so in the past month. Perhaps more worrying, 35 percent of 2nd years claimed to have drunk alcohol on at least one occasion in the 30 days prior to participating in the study.

Table 4.04: Number of occasions over past thirty days on which alcohol was consumed

| Occasions | 2 nd Year | 5 th Year | Male | Female | All Students |
|-------------|----------------------|----------------------|------|--------|--------------|
| | % | % | % | % | % |
| One or more | 35 | 80 | 56 | 57 | 57 |
| None | 65 | 20 | 44 | 43 | 43 |
| Total | 100 | 100 | 100 | 100 | 100 |

More than four in ten respondents (41%) admitted being drunk on at least one occasion in the previous 30 days. Eighteen percent had been in that state on three occasions or more. Again the proportion of 2nd years drinking to excess is of some concern with 24 percent stating that they had been drunk during that time. The corresponding figure for 5th years is 56 percent.

Table 4.05: Occasions over last thirty days respondent drunk

| Occasions | 2 nd Year | 5 th Year | Male | Female | All Subjects |
|-----------|----------------------|----------------------|------|--------|--------------|
| | % | % | % | % | % |
| 0 | 76 | 44 | 60 | 58 | 59 |
| 1-2 | 14 | 31 | 22 | 24 | 23 |
| 3-5 | 5 | 16 | 10 | 12 | 11 |
| 6-9 | 3 | 5 | 4 | 4 | 4 |
| 10-19 | 2 | 2 | 2 | 2 | 2 |
| 20-39 | 0 | 1 | 1 | 1 | 1 |
| Total | 100 | 100 | 100 | 100 | 100 |

Those who admitted drinking were asked to record the number of alcoholic drinks it would take to become drunk. The majority of these respondents (27%), regardless of gender or school year, require between five and six alcoholic drinks to get drunk. One in four 'drinkers' (25%) had consumed alcohol but never been drunk suggesting that these students drank in moderation.

Table 4.06: Number of drinks required by those who admitted drinking to get drunk

| Number of drinks to be drunk | 2 nd Year | 5 th Year | Male | Female | All Subjects | |
|------------------------------|----------------------|----------------------|------|--------|--------------|------|
| | % | % | % | % | % | n. |
| Never drunk | 40 | 10 | 25 | 25 | 25 | 351 |
| 1-2 drinks | 7 | 1 | 4 | 5 | 4 | 60 |
| 3-4 drinks | 18 | 14 | 13 | 18 | 16 | 221 |
| 5-6 drinks | 20 | 35 | 27 | 28 | 27 | 385 |
| 7-8 drinks | 9 | 24 | 19 | 14 | 17 | 233 |
| 9-10 drinks | 3 | 10 | 8 | 6 | 7 | 94 |
| 11-12 drinks | 1 | 3 | 2 | 2 | 2 | 30 |
| 13 drinks or more | 2 | 2 | 3 | 1 | 2 | 28 |
| Total | 100 | 100 | 100 | 100 | 100 | 1401 |

When asked to rate their level of drunkenness the last time they were intoxicated, six percent of those who admitted drinking reported that they had been unable to stand and 69 percent were drunk beyond what they considered to constitute 'somewhat merry'.

Table 4.07: Scale of drunkenness of respondents (who admitted drinking) last time they were drunk

| Scale | 2 nd Year | 5 th Year | Male | Female | All Students | |
|---------------------|----------------------|----------------------|------|--------|--------------|------|
| | % | % | % | % | % | n. |
| Somewhat merry only | 8 | 4 | 6 | 6 | 6 | 73 |
| 2 | 5 | 6 | 6 | 6 | 6 | 71 |
| 3 | 8 | 11 | 10 | 9 | 9 | 112 |
| 4 | 6 | 12 | 9 | 9 | 9 | 104 |
| 5 | 7 | 14 | 9 | 11 | 10 | 126 |
| 6 | 7 | 12 | 9 | 9 | 9 | 112 |
| 7 | 7 | 12 | 11 | 8 | 9 | 111 |
| 8 | 4 | 10 | 7 | 8 | 7 | 88 |
| 9 | 1 | 5 | 3 | 2 | 3 | 33 |
| Unable to stand | 6 | 6 | 6 | 7 | 6 | 75 |
| Never been drunk | 42 | 9 | 24 | 25 | 25 | 298 |
| Total | 100 | 100 | 100 | 100 | 100 | 1202 |

Almost three out of five students (59%) stated that they had 'been drinking' for two consecutive days in a row at some time in the year preceding the survey (see Table 4.08). Fourteen percent stated that they had done so on one or more occasions a month and five percent more than three times a month. Seventy percent of 5th years and 48 percent of 2nd years reported drinking for two consecutive days during the previous year.

Table 4.08: Occasions in last year, when respondents spent two or more successive days drinking

| Two or more successive days drinking | 2 nd Year | 5 th Year | Male | Female | All Students | |
|--------------------------------------|----------------------|----------------------|------|--------|--------------|------|
| | % | % | % | % | % | n. |
| Never | 52 | 30 | 42 | 40 | 41 | 497 |
| 1-2 times in the year | 25 | 28 | 26 | 27 | 26 | 322 |
| 3-5 times in the year | 7 | 16 | 12 | 11 | 12 | 143 |
| 6-10 occasions in the year | 4 | 9 | 6 | 7 | 6 | 79 |
| About once a month | 3 | 8 | 5 | 6 | 5 | 66 |
| 2-3 occasions a month | 4 | 5 | 4 | 5 | 4 | 53 |
| More often | 4 | 6 | 5 | 5 | 5 | 60 |
| Total | 100 | 100 | 100 | 100 | 100 | 1220 |

Nature of Consumption: Sources, Environments and Attitudes

Key drinking environments identified by students in Waterford/Kilkenny Garda Division include their own homes (25%), other residential premises (18%) and public areas (15%). Licensed premises such as bars (28%) and discos (7%) were also prevalent drinking environments.

Table 4.09: Environment in which last alcoholic beverage was consumed.

| Location where last drank alcohol | % |
|---|-----|
| At a bar or a pub | 28 |
| At home | 25 |
| At someone else's home | 18 |
| Out on the street/park/beach or other open area | 15 |
| In a disco | 7 |
| Other | 6 |
| Restaurant | 2 |
| Total | 100 |

A quarter of those who admitted drinking reported that on the last occasion they did so the alcohol was obtained from a public house. More (27%) sourced the drink through friends. Twenty-eight percent got the drink at home, either with permission (20%) or without (8%).

Table 4.10: Source of drink consumed on last occasion

| Source of Alcohol on last occasion | % |
|------------------------------------|-----|
| From friends | 27 |
| I bought it in a pub | 25 |
| Home, with permission | 20 |
| Off-licence | 10 |
| Home, without permission | 8 |
| I bought it in a disco | 4 |
| Other | 4 |
| I bought it in a supermarket | 2 |
| Total | 100 |

The perceived outcomes of drinking alcohol were assessed with students asked to rate the probability of experiencing a range of effects. Sixty-three percent felt that it was likely (37%) or very likely (26%) that alcohol would leave them feeling relaxed. Only 15 percent suggested that such an outcome was unlikely (6%) or very unlikely (9%). The majority of respondents also felt it likely or very likely that they would ‘feel happy’ (78%), ‘friendly’ (72%) and have ‘fun’ (78%). Over half of those surveyed felt that alcohol would help them forget their problems (53%). Finally, just 40 percent felt it likely or very likely that alcohol harms health.

Table 4.11: The likely effects of alcohol consumption according to those surveyed.

| Likely effects of drink. | Very Likely | Likely | Unsure | Unlikely | Very Unlikely. | Total |
|--------------------------|-------------|--------|--------|----------|----------------|-------|
| | % | % | % | % | % | % |
| Feel relaxed | 26 | 37 | 21 | 6 | 9 | 100 |
| Harms Health | 18 | 22 | 25 | 19 | 15 | 100 |
| Feel Happy | 38 | 40 | 13 | 4 | 5 | 100 |
| Forget problems | 28 | 25 | 21 | 15 | 11 | 100 |
| Cannot stop | 10 | 11 | 16 | 24 | 39 | 100 |
| Hangover | 20 | 30 | 16 | 16 | 18 | 100 |
| Friendly | 37 | 35 | 16 | 6 | 6 | 100 |
| Behaviour they regretted | 20 | 25 | 22 | 16 | 17 | 100 |
| Fun | 44 | 34 | 12 | 5 | 5 | 100 |
| Feel sick | 20 | 26 | 20 | 21 | 14 | 100 |

When respondents were asked to rate the reactions of parents and peers to their consumption of alcohol, 72 percent stated that their ‘best friend’ and ‘other good friends’ would have no objections to such behaviour. A slightly larger number (83%) felt it unlikely that ‘other students’ would disapprove. Conversely, the majority of those surveyed reported that parents would either strongly disapprove or disapprove ‘a little’. Less than 1 in 8 (13%) reported that their mothers would not disapprove with 14 percent claiming a similar reaction from their fathers.

Table 4.12: Reaction of peers and Parents to alcohol consumption

| Disapprove if I took 2 Or 3 drinks | Strongly | A little | Not at all | Not applicable | Total |
|------------------------------------|----------|----------|------------|----------------|-------|
| | % | % | % | % | % |
| Mother | 58 | 27 | 13 | 2 | 100 |
| Father | 55 | 28 | 14 | 3 | 100 |
| Grandparent(s) | 53 | 21 | 14 | 11 | 100 |
| Best friend | 8 | 15 | 72 | 5 | 100 |
| Other good friends | 6 | 16 | 73 | 4 | 100 |
| Students my age | 2 | 10 | 83 | 5 | 100 |
| Older brother(s)/sister(s) | 18 | 32 | 31 | 19 | 100 |

Drug Misuse and drugs-related attitudes

Prevalence of misuse

Over a quarter (27%) of all students surveyed reported having taken drugs at some stage in their lives. An even greater number had ‘ever wanted to try drugs’ (30%) or had been offered them (46%).

Almost four in ten 5th year respondents in this sample had taken drugs with an alarming 63 percent admitting that they had been offered drugs. Levels of use, desire to use and 'offered drugs' were lower for 2nd years but nonetheless worrying given the age of these subjects. Differences across gender were insignificant for each of the three constructs in Table 4.13.

Table 4.13: Percentage of respondents who have taken, 'ever wanted to try' or been offered drugs in the past

| | 2 nd Year | 5 th Year | Male | Female | All Students |
|-------------------------|----------------------|----------------------|------|--------|--------------|
| | % | % | % | % | % |
| Have taken drugs | 17 | 39 | 28 | 25 | 27 |
| Wanted to try drugs | 22 | 41 | 31 | 29 | 30 |
| Have been offered drugs | 33 | 63 | 48 | 45 | 46 |

According to the vast majority of those who had used drugs in the past, the first substance they tried was cannabis (89%). This was true across gender and school year. Five percent were unable to identify the first drug taken.

Table 4.14: First drug tried by those who have taken drugs

| Drugs first taken | 2 nd Year | 5 th Year | Male | Female | All Students | |
|--------------------------|----------------------|----------------------|------|--------|--------------|-----|
| | % | % | % | % | % | n. |
| Cannabis | 80 | 94 | 91 | 88 | 89 | 414 |
| I don't know what it was | 11 | 1 | 3 | 6 | 5 | 21 |
| Magic mushrooms | 3 | 2 | 3 | 2 | 2 | 11 |
| Tranquillisers | 2 | 1 | 1 | 2 | 1 | 6 |
| Crack | 4 | 0 | 2 | 1 | 1 | 6 |
| Ecstasy | 0 | 1 | 0 | 2 | 1 | 5 |

Ninety-five percent of those who reported taking drugs stated that they had used cannabis at some stage in their lives. More than one in ten (12%) had taken LSD and 16 percent had used Ecstasy. In terms of frequency of misuse, with the exception of cannabis, most substances have been taken on one or two occasions. Conversely, 17 percent of drug users had taken cannabis on 40 occasions or more.

Table 4.15: Type of drugs misused and frequency of use during life according to respondents who admitted drug use

| Drug | Number of occasions drug used | | | | | | |
|-----------------------|-------------------------------|-----|-----|-----|-------|-------|------|
| | 0 | 1-2 | 3-5 | 6-9 | 10-19 | 20-39 | 40 + |
| | % | % | % | % | % | % | % |
| Tranquillisers | 93 | 4 | 2 | 0 | 1 | 0 | 0 |
| Cannabis | 5 | 32 | 14 | 10 | 12 | 9 | 17 |
| LSD | 88 | 7 | 2 | 1 | 1 | 1 | 0 |
| Crack | 94 | 3 | 2 | 1 | 0 | 0 | 0 |
| Cocaine | 94 | 4 | 1 | 1 | 0 | 0 | 0 |
| Heroin by smoking | 94 | 4 | 1 | 1 | 0 | 0 | 0 |
| Ecstasy | 84 | 9 | 2 | 2 | 2 | 1 | 1 |
| Injecting other drugs | 98 | 1 | 0 | 1 | 0 | 0 | 0 |
| Amphetamine | 94 | 2 | 2 | 1 | 1 | 0 | 0 |

Four out of five drug users had engaged in that activity in the preceding 12 months. Twenty-one percent claimed to have done so in the few days preceding the survey's administration and an additional ten percent in the previous two weeks. As can be seen from Table 4.16 ('All Students Cumulative' column), 42 percent of users had taken drugs in the month before the survey and 64 percent in the preceding six months.

Table 4.16: When last drug was taken

| Occasion | All Students | All Students Cumulative | All Students |
|------------------------------|--------------|-------------------------|--------------|
| | % | % | n. |
| Not within the last year | 20 | 20 | 97 |
| Within the last few days | 21 | 21 | 101 |
| Within the last two weeks | 10 | 31 | 46 |
| Within the last month | 11 | 42 | 52 |
| Within the last three months | 11 | 53 | 53 |
| Within the last six months | 11 | 64 | 54 |
| Within the last nine months | 4 | 68 | 21 |
| Within the last year | 11 | 79 | 51 |

Respondents' knowledge of a comprehensive list of the most widely used substances was assessed by asking them to state whether or not they had heard of each. More than nine out of ten stated that they had heard of marijuana (95%), crack (91%), cocaine (92%) and heroin (91%) with a marginally smaller proportion being aware of the existence of ecstasy (88%). Fewer were aware of the existence of magic mushrooms (81%), tranquillisers (70%), LSD (59%), methadone (56%) or Amphetamines (42%). Predictably, with the exception of cocaine, significantly more 5th year than 2nd year students were aware of the availability of each of the drugs listed. No gender differences emerge from the data.

Table 4.17: Heard of drug

| Heard of drug | 2 nd Year | 5 th Year | All Students |
|-----------------|----------------------|----------------------|--------------|
| | % | % | % |
| Tranquillisers | 60 | 82 | 70 |
| Marijuana | 94 | 96 | 95 |
| LSD | 42 | 80 | 59 |
| Amphetamines | 27 | 61 | 42 |
| Crack | 89 | 93 | 91 |
| Cocaine | 91 | 93 | 92 |
| Heroin | 90 | 92 | 91 |
| Ecstasy | 83 | 93 | 88 |
| Methadone | 46 | 69 | 56 |
| Magic mushrooms | 71 | 93 | 81 |

Eight percent of all students surveyed reported that they had used more than one drug on the same occasion at least once in the past. Six percent did so once or twice, two percent 'frequently' and the remainder (1%) claim to engage in polydrug use 'always'.

Table 4.18: Times when respondents used more than one drug on same occasion

| Occasions | 2 nd Year | 5 th Year | Male | Female | All Students | |
|--------------------|----------------------|----------------------|------|--------|--------------|----|
| | % | % | % | % | % | n. |
| Never | 94 | 89 | 90 | 93 | 92 | |
| Once or twice | 5 | 8 | 8 | 5 | 6 | |
| Frequently | 1 | 2 | 1 | 2 | 2 | |
| Always | 0 | 1 | 0 | 1 | 1 | |
| Total ⁹ | 100 | 100 | 100 | 100 | 100 | |

Nature of Drug Misuse: Drug taking environments and perceptions towards misuse

Table 4.19 and 4.20, below, contain information relating to the source of users first drug and last drug respectively. Both illustrate that most users acquire their drugs through friends. This source supplied 86 percent of first-time users and 71 percent of users on the last occasion. Siblings, strangers and dealers are less prominent sources.

Table 4.19: How first drug was obtained

| Source | 2 nd Year | 5 th Year | Male | Female | All Students | |
|--------------------------|----------------------|----------------------|------|--------|--------------|-----|
| | % | % | % | % | % | n. |
| Friend | 78 | 90 | 85 | 87 | 86 | 388 |
| Older brother or sisters | 6 | 6 | 4 | 7 | 6 | 27 |
| Stranger | 9 | 3 | 7 | 3 | 5 | 24 |
| None of the these | 8 | 1 | 4 | 3 | 3 | 15 |

Table 4.20: How drug was obtained on last occasion

| Where obtained | 2 nd Year | 5 th Year | Male | Female | All Students | |
|---------------------|----------------------|----------------------|------|--------|--------------|-----|
| | % | % | % | % | % | n. |
| A friend | 59 | 77 | 69 | 73 | 71 | 316 |
| Brother/sister | 5 | 3 | 2 | 5 | 3 | 15 |
| Dealer and supplier | 26 | 15 | 24 | 14 | 19 | 82 |
| Other | 10 | 5 | 5 | 8 | 7 | 30 |

On the last occasion that drugs were taken, most misuse took place in the homes of friends (28%), on the street (23%) or in a park/beach or other public area (22%). A smaller percentage reported taking drugs in their own house (7%) or in a club or disco (9%). The prevalence of 'friend's house', 'street' or 'park, beach or other public area' as key environments for drug misuse remain when the data is examined by gender or age.

⁹ When calculated at two places of decimals, totals sum to 100%.

Table 4.21: Where drugs were taken on last occasion

| Location | 2 nd Year | 5 th Year | Male | Female | All Students | |
|--------------------------------|----------------------|----------------------|------|--------|--------------|-----|
| | % | % | % | % | % | n. |
| Friend's house | 18 | 33 | 22 | 33 | 28 | 124 |
| Street | 30 | 19 | 25 | 21 | 23 | 102 |
| Park, beach, other public area | 16 | 25 | 23 | 20 | 22 | 98 |
| Club/Disco | 10 | 9 | 8 | 11 | 9 | 41 |
| Other place (please specify) | 13 | 5 | 9 | 6 | 8 | 35 |
| Your own house | 9 | 6 | 11 | 3 | 7 | 31 |
| Pub | 2 | 3 | 1 | 4 | 3 | 13 |

Those who reported using drugs were asked about the perceived difficulty gaining access to a variety of substances. With the exception of heroin and cocaine, more than 30 percent of students believed that it was either very easy or fairly easy to obtain any of the drugs listed. Cannabis emerges as the easiest to acquire with 63 percent reporting that it is fairly easy (27%) or very easy (36%). Forty four percent suggested that it was easy to obtain ecstasy and just eight percent stated that it was not possible to do so.

Table 4.22: Difficulty associated with getting a variety of different drugs according to users

| Drugs | Not possible | Very difficult | Fairly difficult | Fairly easy | Very easy | Don't know |
|-----------------|--------------|----------------|------------------|-------------|-----------|------------|
| | % | % | % | % | % | % |
| Cannabis | 6 | 7 | 15 | 27 | 36 | 10 |
| LSD | 10 | 12 | 22 | 15 | 10 | 31 |
| Ecstasy | 8 | 11 | 14 | 22 | 22 | 23 |
| Heroin | 13 | 18 | 20 | 10 | 9 | 30 |
| Cocaine | 9 | 16 | 22 | 13 | 11 | 29 |
| Magic mushrooms | 9 | 9 | 18 | 20 | 21 | 24 |

Again in line with findings in Chapter 3, most drug users were motivated out of curiosity (59%) with a smaller, but nonetheless significant, percentage wanting to 'feel high' (28%), forget personal problems (9%) or alleviate boredom (9%). Females (63%) were more likely to take drugs out of curiosity than were males (54%) and were less likely to want to 'feel high' (F=22%, M=34%). Some variations in motivations are also notable across age with 5th year students (67%) more likely to use out of curiosity than 2nd (44%) years.

Table 4.23: Reasons why drugs were used

| Why use drugs | 2 nd Year | 5 th Year | Male | Female | All Students | |
|--------------------------|----------------------|----------------------|------|--------|--------------|-----|
| | % | % | % | % | % | n. |
| I was curious | 44 | 67 | 54 | 63 | 59 | 241 |
| I want to feel high | 41 | 21 | 34 | 22 | 28 | 115 |
| I had nothing to do | 8 | 10 | 8 | 10 | 9 | 38 |
| To forget my problems | 15 | 6 | 8 | 11 | 9 | 38 |
| To be the same as others | 6 | 7 | 9 | 4 | 7 | 27 |
| Other reasons | 5 | 3 | 3 | 4 | 3 | 14 |
| I don't remember | 3 | 3 | 2 | 4 | 3 | 12 |
| Total n. | | | | | | 490 |

As evident in Table 4.24, the majority of students (72%) surveyed claimed that if a situation in which they were offered drugs arose, they would say no straight away. Thirteen per cent stated that they would take the drug, six percent because they 'would be happy to do so' and a further seven percent because of social pressure. Just two percent would report such an incident to the Garda Síochána. 2nd year students (75%) were more likely to refuse drugs than were than 5th years (69%).

Table 4.24: What respondents would do if offered drugs

| Response | 2 nd Year | 5 th Year | Male | Female | All Students |
|---------------------------------|----------------------|----------------------|------|--------|--------------|
| | % | % | % | % | % |
| Say no straight away | 75 | 69 | 70 | 74 | 72 |
| Feel pressurised and accept | 7 | 7 | 9 | 5 | 7 |
| Be happy to take the drug | 5 | 7 | 7 | 5 | 6 |
| Report the person to the Gardaí | 2 | 1 | 3 | 1 | 2 |
| Report the person to adult | 3 | 1 | 1 | 3 | 2 |
| Other, please specify | 9 | 15 | 11 | 12 | 11 |

More than eight in ten (79%) respondents would advise friends involved in drug misuse of the dangers associated with that activity. Males (74%) were less likely to do so than females (84%) and 2nd years (78%) than 5th years (82%). Their willingness to inform an adult of drug-taking by friends, however, was much less marked, with 30 percent stating that they would do so. There were marked gender and age effects with females (36%) more likely to report misuse to adults than males (24%) and 2nd years (35%) more so than 5th years (26%).

Table 4.25: Action taken if friends took drugs.

| Action | 2 nd Year | 5 th Year | Male | Female | All Students |
|-------------------------|----------------------|----------------------|------|--------|--------------|
| | % | % | % | % | % |
| Point out dangers | 78 | 82 | 74 | 84 | 79 |
| Tell adult if friend... | 35 | 26 | 24 | 36 | 30 |

Drugs-related Education

When asked about the level of information on drugs provided within the school environment (see Table 4.26), over a quarter of respondents (28%) reported that they had received no such information. A further 46 percent who had received drugs-related education suggested that either a lot more (29%) or a little more (17%) information should be provided.

Table 4.26: School drug education by school year

| Level of education provided | 2 nd Year | 5 th Year | All Students |
|-------------------------------|----------------------|----------------------|--------------|
| | % | % | % |
| Enough Information given | 19 | 20 | 20 |
| A little more information | 16 | 18 | 17 |
| A lot more information needed | 30 | 29 | 29 |
| No information given | 27 | 30 | 28 |
| Don't know | 8 | 4 | 6 |

Forty one percent of respondents remember receiving information on drug or alcohol misuse from sources outside the school environment. When examined by school year, 2nd year students (43%) report receiving more information about alcohol and drugs from outside school sources than 5th year students (38%).

Table 4.27: Information given outside of school

| Information given outside of school | 2 nd Year | 5 th Year | All Students |
|-------------------------------------|----------------------|----------------------|--------------|
| | % | % | % |
| Drugs | 43 | 38 | 41 |

Conclusion

The analysis of responses from the 1715 respondents surveyed in Waterford/Kilkenny illustrates that a considerable proportion of second-level students in that Garda Division have misused alcohol, tobacco and drugs. The key findings include:

- Fifty-eight percent of second-level students in Waterford/Kilkenny Garda Division have some experience of smoking tobacco and 26 percent do so at least once a week;
- Seventy-nine percent have drunk alcohol at some stage in their lives and 57 percent have done so in the 30 days preceding the survey
- Twenty-seven percent have taken drugs.

Additional tables on TAD use by second level students in Waterford/Kilkenny Garda Division are provided in Appendix E.

CHAPTER 5
TOBACCO, ALOCHOL AND DRUG USE in KERRY GARDA DIVISION

Introduction

This chapter presents an overview of tobacco, alcohol and drug misuse among second level school students in Kerry Garda Division. As with the two previous chapters, this chapter is presented in three main sections, dealing with tobacco, alcohol and drug misuse respectively. Again only core facets of misuse are presented below with findings of less immediate interest consigned to Appendix F.

Smoking Cigarettes

The extent of tobacco use by second-level students in Kerry Division differs little from that uncovered in Waterford/Kilkenny. Four in ten reported having smoked during their lives and 18 percent stated that they did so on more than 40 occasions (see Table 5.01). In keeping with trends emerging earlier, the data would tend to suggest that the majority of those who have smoked were ‘experimenters’ and cannot be considered ‘regular smokers’. When asked to record their smoking behaviour over the preceding 30 days, for instance, just 19 percent reported that they had smoked more than one cigarette a week (see Table 5.02).¹⁰ 73 percent stated that they had abstained from smoked during this time.

Again gender differences are present with females more notable smokers. They were more likely to have smoked at some stage in their lives (F=75%, M=54%) and in the preceding 30 days (F=30%, M=24%). Twenty percent of females had smoked on 40 occasions or more, a much higher proportion than recorded for males (15%) (see Table 5.01). Additionally, more females (22%) than males (17%) smoke on a weekly basis (i.e. are ‘regular smokers’) (see Table 5.02).

Sixty-five percent of 5th Years had smoked at some stage with 23 percent claiming to have done so on 40 occasions or more and 24 percent stating that they do so at least once a week. More than half of second years (54%) had experience of tobacco misuse with 15 percent doing so on a weekly basis.

Table 5.01: Number of occasions on which respondent smoked.

| Occasions | 2 nd Year | 5 th Year | Male | Female | All Students |
|------------|----------------------|----------------------|------|--------|--------------|
| | % | % | % | % | % |
| 0 | 46 | 35 | 46 | 35 | 40 |
| 1-2 | 23 | 16 | 20 | 19 | 19 |
| 3-5 | 6 | 9 | 6 | 9 | 8 |
| 6-9 | 7 | 5 | 5 | 7 | 6 |
| 10-19 | 4 | 7 | 5 | 6 | 5 |
| 20-39 | 3 | 5 | 4 | 4 | 4 |
| 40 or more | 12 | 23 | 15 | 20 | 18 |
| Total | 100 | 100 | 100 | 100 | 100 |

¹⁰ This figure is derived from Table 5.02 by calculating the sum of ‘all students’ who smoked ‘less than one cigarette per day’ (but by default ‘more than one cigarette per week’ - the next least extreme point on the scale) to 20 cigarettes per day. Whilst in the table this sums to 20 percent, figures are rounded and when calculated using decimals, the true percentage emerges as 19.

Table 5.02: No of cigarettes smoked during last thirty days

| No. of cigarettes smoked during last 30 days | 2 nd Year | 5 th Year | Male | Female | All Students |
|--|----------------------|----------------------|------|--------|--------------|
| | % | % | % | % | % |
| Not at all | 77 | 68 | 76 | 70 | 73 |
| Less than 1 cigarette per week | 8 | 8 | 7 | 9 | 8 |
| Less than one cigarette per day | 3 | 3 | 3 | 3 | 3 |
| 1-5 cigarettes per day | 5 | 8 | 4 | 9 | 7 |
| 6-10 cigarettes per day | 4 | 6 | 5 | 6 | 5 |
| 11-20 cigarettes per day | 2 | 5 | 4 | 3 | 4 |
| More than 20 cigarettes per day | 1 | 2 | 1 | 1 | 1 |
| Total | 100 | 100 | 100 | 100 | 100 |

Alcohol Consumption

Extent of Alcohol Consumption

Tables 5.03, 5.04 and 5.05 contain data relating to life-time prevalence of alcohol use (Table 5.03), use in the 30 days preceding the survey (Table 5.04) and the number of occasions during that time on which respondents had been drunk (Table 5.05). Three in every four second level students surveyed in this sampled reported that they had consumed a whole alcohol drink at least once in their lives although a far smaller proportion could be considered regular drinkers – just over one in five (22%) had done so on 40 occasions or more.

Table 5.03: Number of occasions (throughout life) during which respondent consumed a whole alcoholic drink

| Occasions | 2 nd Year | 5 th Year | Total |
|------------|----------------------|----------------------|-------|
| | % | % | % |
| 0 | 36 | 14 | 25 |
| 1-2 | 21 | 6 | 14 |
| 3-5 | 14 | 6 | 10 |
| 6-9 | 8 | 10 | 9 |
| 10-19 | 8 | 12 | 10 |
| 20-39 | 5 | 16 | 10 |
| 40 or more | 8 | 36 | 22 |

When asked about behaviour in the month preceding the survey, 53 percent admitted drinking alcohol during that time and 36 percent had been drunk on one or more occasions. Seven percent had been drunk on between three and five occasions and a further two percent on between six and nine occasions.

Table 5.04: Number of occasions over past thirty days on which alcohol was consumed

| Alcohol consumed in last thirty days | 2 nd year | Fifth Year | Male | Female | All Students |
|--------------------------------------|----------------------|------------|------|--------|--------------|
| | % | % | % | % | % |
| One or more | 34 | 71 | 53 | 52 | 53 |
| None | 66 | 29 | 47 | 48 | 47 |
| Total | 100 | 100 | 100 | 100 | 100 |

Table 5.05: Occasions over last thirty days respondent drunk

| Drunk in last thirty days | 2 nd Year | 5 th Year | Male | Female | Total |
|---------------------------|----------------------|----------------------|------|--------|-------|
| | % | % | % | % | % |
| 0 | 77 | 54 | 68 | 59 | 64 |
| 1-2 | 18 | 31 | 21 | 31 | 26 |
| 3-5 | 3 | 10 | 8 | 6 | 7 |
| 6-9 | 0 | 3 | 2 | 2 | 2 |
| 10-19 | 0 | 2 | 1 | 2 | 1 |
| 20-39 | 1 | 0 | 0 | 1 | 0 |
| 40 or more | 1 | 0 | 0 | 0 | 0 |
| Total | 100 | 100 | 100 | 100 | 100 |

In line with results from Waterford/Kilkenny Garda Division, female students (41%) in Kerry emerge as more likely to have been drunk in the 30 days preceding the survey than were males (32%). It is interesting that both were almost equally likely to have drunk alcohol during that time (f=52, m=53) which would tend to suggest that females are more likely to drink to the extent that they become intoxicated.

Sixty four percent of 2nd Years had consumed a whole alcoholic drink in their life-time and 21 percent claimed to have been drunk on one or two occasions (18%) or between three and five occasions (3%) in the preceding 30 days.

86 percent of 5th Years had consumed a whole alcoholic drink at some stage in their lives and 46 percent had been drunk in the 30 days preceding the survey's administration. Almost a third (31%) had been drunk on one or two occasions, ten percent on between three and five occasions and the remainder (5%) on more than six occasions.

Those who admitted drinking (n=1018) were asked to record the number of alcoholic drinks required to become intoxicated (see Table 5.06). Between five and six drinks emerged as the most likely volume of drink needed to become drunk.

Table 5.06: Number of drinks required by those who admitted drinking to get drunk

| Number of drinks to be drunk | 2 nd Year | 5 th Year | Male | Female | All Subjects | |
|------------------------------|----------------------|----------------------|------|--------|--------------|------|
| | % | % | % | % | % | n. |
| I have never been drunk | 44 | 17 | 29 | 29 | 29 | 295 |
| 1-2 drinks | 4 | 2 | 2 | 4 | 3 | 29 |
| 3-4 drinks | 15 | 16 | 13 | 18 | 15 | 157 |
| 5-6 drinks | 21 | 24 | 24 | 21 | 23 | 233 |
| 7-8 drinks | 11 | 24 | 19 | 18 | 18 | 184 |
| 9-10 drinks | 3 | 9 | 7 | 6 | 7 | 67 |
| 11-12 drinks | 2 | 4 | 3 | 2 | 3 | 29 |
| 13 drinks or more | 1 | 3 | 3 | 1 | 2 | 23 |
| Total | 100 | 100 | 100 | 100 | 100 | 1018 |

Table 5.07: Scale of drunkenness of respondents (who admitted drinking) last time they were drunk

| Scale of drunkenness | 2 nd Year | 5 th Year | Male | Female | All Students | |
|----------------------------|----------------------|----------------------|------|--------|--------------|-----|
| | % | % | % | % | % | n. |
| Never been drunk | 43 | 17 | 28 | 28 | 28 | 251 |
| Somewhat merry only | 10 | 3 | 7 | 5 | 6 | 52 |
| 2 | 4 | 7 | 6 | 6 | 6 | 52 |
| 3 | 5 | 9 | 9 | 6 | 8 | 68 |
| 4 | 10 | 11 | 11 | 11 | 11 | 97 |
| 5 | 7 | 13 | 8 | 13 | 10 | 91 |
| 6 | 4 | 12 | 10 | 6 | 8 | 74 |
| 7 | 6 | 10 | 9 | 8 | 8 | 73 |
| 8 | 5 | 6 | 4 | 7 | 6 | 50 |
| 9 | 3 | 3 | 3 | 3 | 3 | 27 |
| Unable to stand on my feet | 4 | 8 | 6 | 7 | 6 | 54 |
| Total | 100 | 100 | 100 | 100 | 100 | 889 |

Those who admitted drinking in the past were asked to rate their level of intoxication the last time they drank and based on a scale that ranged from ‘never been drunk’ to ‘unable to stand on my feet’ (see Table 5.07). Twenty-eight percent reported that they had never been drunk with a further six percent remembering being ‘somewhat merry only’. On the far end of the scale, six percent had been ‘unable to stand’ and a further 17 percent gave ratings of between seven and nine on the scale.

Forty-three percent of 2nd Years had never been drunk. Of concern, however, is the four percent who had been ‘unable to stand’ and additional 14 percent who estimated that their level of drunkenness corresponded to points seven, eight and nine on the scale. Eight percent of 5th Years had been ‘unable to stand’ and just 17 percent had never been drunk.

Table 5.08 contains information relating to frequency with which respondents spent two or more occasions drinking in the year preceding the survey. Across gender and school year, and for the total sample, more than four in ten reported that they had done so.

Table 5.08: Occasions in last year, when respondents spent two or more successive days drinking

| Two or more successive days drinking | 2 nd Year | 5 th Year | Male | Female | All Students | |
|--------------------------------------|----------------------|----------------------|------|--------|--------------|-----|
| | % | % | % | % | % | n. |
| Never | 59 | 42 | 46 | 53 | 49 | 442 |
| 1-2 times in the year | 21 | 28 | 28 | 22 | 25 | 224 |
| 3-5 times in the year | 9 | 14 | 12 | 11 | 12 | 103 |
| 6-10 occasions in the year | 4 | 5 | 5 | 5 | 5 | 42 |
| About once a month | 3 | 4 | 3 | 4 | 3 | 31 |
| 2-3 occasions a month | 3 | 4 | 3 | 4 | 4 | 31 |
| More often | 2 | 3 | 3 | 2 | 2 | 21 |
| Total | 100 | 100 | 100 | 100 | 100 | 895 |

Nature of Consumption: Sources, Environments and Attitudes

On the last occasion they consumed alcohol, 16 percent of respondents obtained it through a public house, with a further 14 percent doing so through a disco (9%) or off-licence (5%). In total 26 percent reported that friends had supplied the alcohol. Nineteen percent acquired the drink at home, either with (11%) or without (8%) parental permission (see Table 5.09).

Table 5.09: Source of drink consumed on last occasion

| Where alcohol was obtained on last occasion | % |
|---|-----|
| I bought it in a pub | 16 |
| From friends (adult friends) | 13 |
| From friends (of your own age) | 13 |
| Home, with permission | 11 |
| I bought it in a disco | 9 |
| Home, without permission | 8 |
| Other (please describe) | 6 |
| Off-licence | 5 |
| I bought it in a supermarket | 2 |
| I never drink alcohol | 18 |
| Total | 100 |

When asked to report where they had consumed this drink, the majority claimed to have done so either in their own home (18%) or that of someone else (17%, see Table 5.10). Public houses (18%) and discos (11%) were also prevalent drinking environments. Nine percent stated that they had drunk on the street, in a park or some other public area.

Table 5.10: Environment in which last alcoholic beverage was consumed

| Location where last drank alcohol | % |
|--|-----|
| At home | 18 |
| At a bar or a pub | 18 |
| At someone else's home | 17 |
| In a disco | 11 |
| Out on the street, in a park, beach or other open area | 9 |
| Other | 7 |
| Restaurant | 2 |
| Have never had alcoholic drink | 17 |
| Total | 100 |

Students were asked to record their level of agreement with four alcohol-related assertions: Drink is easy to obtain; that many young people drink to keep up with friends; that it is harmful to health and; it makes people feel bad (see Table 5.11). In response, 61 percent either strongly agreed (20%) or agreed (41%) that alcohol is easy to obtain with just 19 percent disagreeing. Most also agreed or strongly agreed that alcohol harms health and reflects a desire to conform. Conversely, just 18 percent strongly agreed or agreed that drink makes people feel bad.

Table 5.11: Level of agreement with assertions that: a) Drink is easy to obtain; b) that many young people drink to keep up with friends; c) that drink is harmful to their health and; d) that it makes people feel bad.

| Agree or Disagree | Easy to obtain alcohol | Drink to keep up with friends | Drink harmful to health | Drink makes you feel bad |
|---------------------------|------------------------|-------------------------------|-------------------------|--------------------------|
| | % | % | % | % |
| Strongly agree | 20 | 26 | 37 | 7 |
| Agree | 41 | 39 | 38 | 11 |
| Neither agree or disagree | 20 | 15 | 18 | 40 |
| Disagree | 15 | 15 | 6 | 30 |
| Strongly disagree | 4 | 5 | 2 | 12 |
| Total | 100 | 100 | 100 | 100 |

Predictably, parents, grandparents and older siblings were judged by respondents as most likely to disapprove if it emerged that two or three drinks had been consumed (see Table 5.12). In contrast, friends, best friends and other peers were seen as being much likely to accept such behaviour.

Table 5.12: Reaction of peers and Parents to alcohol consumption

| Disapprove if I took 2 Or 3 drinks | Strongly | A little | Not at all | Not applicable | Total |
|------------------------------------|----------|----------|------------|----------------|-------|
| | % | % | % | % | % |
| Mother | 66 | 24 | 8 | 2 | 100 |
| Father | 61 | 25 | 12 | 3 | 100 |
| Grandparent(s) | 53 | 20 | 13 | 14 | 100 |
| Older brother(s)/sister(s) | 23 | 33 | 27 | 16 | 100 |
| Best friend | 9 | 17 | 69 | 5 | 100 |
| Other good friends | 7 | 20 | 69 | 5 | 100 |
| Students my age | 3 | 11 | 79 | 6 | 100 |

Drug Misuse and drugs-related attitudes

Prevalence of misuse

Almost one fifth (18%) of post-primary students in Kerry Garda Division report having taken drugs at some stage in their lives. Considerably more have 'wanted to try' drugs (27%). Again somewhat alarmingly, almost four in every ten students (37%) in this sample had been offered drugs (see Table 5.13)

Gender patterns that emerged in early chapters are also evident here with males more likely to have taken drugs (M=22%, F=14%) and to have been offered drugs (M=41%, F=33%) than females. Interestingly, however, there was no difference in 'wanting drugs' across gender.

Twenty-three percent of 5th years had taken drugs and almost half (49%) had been offered them. For 2nd years, one quarter had been offered drugs and just over one in ten (12%) had taken them.

Table 5.13: Percentage of respondents who have taken, 'ever wanted to try' or been offered drugs in the past

| | 2 nd Year | 5 th Year | Male | Female | All Students |
|--------------------------|----------------------|----------------------|------|--------|--------------|
| | % | % | % | % | % |
| Have taken drugs. | 12 | 23 | 22 | 14 | 18 |
| Ever wanted to try drugs | 19 | 34 | 27 | 27 | 27 |
| Have been offered drugs | 25 | 49 | 41 | 33 | 37 |

Users were most likely to have begun taking drugs between the ages of 14 and 16. Age 15 is particularly prevalent as a time of first use of cannabis (34%) LSD (56%) and ecstasy (34%). For heroin, age 14 is important and for mushrooms and cocaine ages 16 and 17 respectively emerge as key times for first-use.

Table 5.14. Age when 5th Year students did each of the following

| Age | Cannabis | LSD | Ecstasy | Heroin | Cocaine | Mushrooms |
|----------------|----------|-----|---------|--------|---------|-----------|
| | % | % | % | % | % | % |
| Age 11 or less | 3 | 0 | 0 | 0 | 20 | 22 |
| 12 | 3 | 0 | 0 | 0 | 0 | 0 |
| 13 | 2 | 0 | 19 | 29 | 0 | 13 |
| 14 | 22 | 23 | 16 | 48 | 6 | 3 |
| 15 | 34 | 56 | 34 | 19 | 35 | 20 |
| 16 | 31 | 0 | 31 | 3 | 0 | 42 |
| 17 | 5 | 21 | 0 | 0 | 39 | 0 |
| N | 114 | 9 | 15 | 7 | 9 | 17 |

Once again most of those who had taken drugs reported that their first experience was with cannabis (89%), a facet of use that holds across age and gender (see Table 5.15). Less than four percent began with any other substance.

Table 5.15: First drug tried by those who have taken drugs

| Drugs first taken | 2 nd Year | 5 th Year | Male | Female | All Students | |
|--------------------------|----------------------|----------------------|------|--------|--------------|-----|
| | % | % | % | % | % | n. |
| Marijuana | 80 | 93 | 90 | 87 | 89 | 173 |
| Tranquillisers/sedatives | 8 | 0 | 1 | 5 | 3 | 4 |
| I don't know what it was | 5 | 1 | 1 | 5 | 2 | 3 |
| Magic mushrooms | 0 | 3 | 1 | 3 | 2 | 2 |
| Crack | 3 | 1 | 3 | 0 | 2 | 3 |
| Amphetamines | 0 | 1 | 1 | 0 | 1 | 1 |
| Heroin | 0 | 1 | 1 | 0 | 1 | 0 |
| LSD | 1 | 0 | 1 | 0 | 0 | 1 |
| Ecstasy | 0 | 0 | 0 | 1 | 0 | 1 |
| Cocaine | 0 | 0 | 0 | 0 | 0 | 1 |

Ninety-two percent of those who admitted drug use reported that they had taken cannabis at some stage in their lives. More than one in ten had done so on 40 occasions or more and a further 40 percent on more than 3 occasions. In the main, use of the other substances listed in Table 5.16 is comparatively low. Whilst 14 percent of users stated that they had taken ecstasy, most of these had done so on just one or two occasions (8%), a trend also evident for LSD consumption.

Table 5.16: Type of drugs misused and frequency of use during life according to respondents who admitted drug use

| Drug | Number of occasions drug used | | | | | | |
|---------------------|-------------------------------|-----|-----|-----|-------|-------|------|
| | 0 | 1-2 | 3-5 | 6-9 | 10-19 | 20-39 | 40 + |
| | % | % | % | % | % | % | % |
| Tranquillisers | 91 | 5 | 2 | 2 | 0 | 0 | 0 |
| Marijuana | 8 | 39 | 15 | 6 | 11 | 8 | 12 |
| LSD etc. | 92 | 7 | 1 | 0 | 0 | 0 | 0 |
| Crack | 91 | 5 | 3 | 1 | 0 | 0 | 0 |
| Cocaine | 92 | 5 | 2 | 0 | 1 | 0 | 0 |
| Heroin by smoking | 94 | 2 | 1 | 2 | 0 | 0 | 1 |
| Heroin by injection | 96 | 2 | 1 | 0 | 0 | 0 | 0 |
| Ecstasy | 86 | 8 | 2 | 1 | 0 | 2 | 1 |
| Amphetamine | 96 | 3 | 1 | 0 | 0 | 0 | 0 |
| Anabolic Steroids | 94 | 3 | 1 | 1 | 1 | 0 | 0 |

Five per cent of all students surveyed reported that they had used more than one drug on the same occasion at least once in their life. Four percent did so once or twice.

Table 5.17: Times when respondents used more than one drug on same occasion

| Occasion | 2 nd Year | 5 th Year | Male | Female | All Students |
|---------------|----------------------|----------------------|------|--------|--------------|
| | % | % | % | % | % |
| Never | 96 | 95 | 95 | 96 | 95 |
| Once or twice | 3 | 4 | 3 | 4 | 4 |
| Frequently | 0 | 1 | 1 | 0 | 1 |
| Always | 0 | 0 | 1 | 0 | 0 |

Nature of Drug Misuse: Drug Taking Environments and attitudes towards misuse

Those who admitted taking drugs were asked to identify the individual who supplied the substance the first time they did so (Table 5.18) and on the most recent occasion (Table 5.19). Again in line with information presented in earlier chapters, a 'friend' supplied 77 percent of users their first time and 68 percent on the last occasions. It is interesting to note that there is a marked difference in 'source of drugs' across school year. Whilst 'friends' were likely to have supplied both 2nd and 5th years, for younger students 'strangers' and 'dealers' were also key suppliers.

Table 5.18: How first drug was obtained

| Source | 2 nd Year | 5 th Year | Male | Female | All Students | |
|-------------------|----------------------|----------------------|------|--------|--------------|-----|
| | % | % | % | % | % | n. |
| Friend | 68 | 82 | 78 | 77 | 77 | 176 |
| Stranger | 23 | 8 | 15 | 9 | 12 | 28 |
| None of the these | 3 | 7 | 6 | 5 | 6 | 13 |
| Brother/sister | 6 | 4 | 2 | 9 | 4 | 10 |

Table 5.19: How drugs were obtained on last occasion

| Where obtained | 2 nd Year | 5 th Year | Male | Female | All Students | |
|---------------------|----------------------|----------------------|------|--------|--------------|-----|
| | % | % | % | % | % | n. |
| Friend | 56 | 74 | 67 | 71 | 68 | 157 |
| Dealer and supplier | 25 | 15 | 20 | 16 | 18 | 42 |
| Other | 16 | 8 | 12 | 9 | 11 | 25 |
| Brother/sister | 3 | 2 | 2 | 4 | 3 | 6 |

On the last occasion that respondents took drugs, most did so in a residential premises, either a friends house (25%) or their own home (12%). Public areas, such as parks and beaches (22%) and the street (14%) accounted for the next most prevalent drug-taking environment.

Table 5.20: Where drugs were taken on last occasion

| Location | 2 nd Year | 5 th Year | Male | Female | All Students. | |
|------------------|----------------------|----------------------|------|--------|---------------|----|
| | % | % | % | % | % | n. |
| Friend's house | 18 | 29 | 28 | 21 | 25 | 58 |
| Park, beach etc. | 23 | 22 | 21 | 24 | 22 | 52 |
| Street | 16 | 14 | 16 | 12 | 14 | 33 |
| Club/Disco/Bar | 15 | 13 | 13 | 15 | 13 | 31 |
| Your own house | 16 | 9 | 8 | 18 | 12 | 27 |
| Other | 12 | 8 | 10 | 8 | 9 | 20 |
| Concert | 0 | 6 | 5 | 2 | 4 | 9 |

Most drug users surveyed stated that they took drugs out of curiosity (65%). Wanting to 'feel high' (27%), a desire to 'forget my problems' (10%) and 'boredom' (9%) were identified as other prominent motivators. Whilst there was little variation in trends across gender and age, younger students (14%) were more likely to have taken drugs to forget personal problems than were older students (8%) and females (11%) more so than males (9%)

Table 5.21: Reasons why drugs were used

| Reason to use | 2 nd Year | 5 th Year | Male | Female | All Students. | |
|--------------------------|----------------------|----------------------|------|--------|---------------|-----|
| | % | % | % | % | % | n. |
| I was curious | 59 | 67 | 59 | 73 | 65 | 136 |
| I want to feel high | 30 | 26 | 28 | 27 | 27 | 57 |
| To forget my problems | 14 | 8 | 9 | 11 | 10 | 21 |
| I had nothing to do | 12 | 7 | 6 | 14 | 9 | 19 |
| To be the same as others | 8 | 2 | 4 | 5 | 4 | 9 |
| Other reasons | 1 | 4 | 5 | 0 | 3 | 6 |
| I don't remember | 1 | 2 | 2 | 1 | 2 | 3 |

When asked about their likely response to a hypothetical situation in which they were offered drugs, almost three quarters (74%) stated that they would 'say no straight away'. Ten percent would take the drug, six percent because of social pressure and a further four percent because they really wanted to do so ('be happy to take the drug'). Younger students (71%) were less likely to say 'no straight away' than were older students (76%) and males (71%) less so than females (76%). Just two percent of the sample would report such an incident to a member of the Garda Síochána.

5.22: What respondents would do if offered drugs

| Response | 2 nd Year | 5 th Year | Male | Female | All students |
|---------------------------------|----------------------|----------------------|------|--------|--------------|
| | % | % | % | % | % |
| Say no straight away | 71 | 76 | 71 | 76 | 74 |
| Feel pressurised and accept | 5 | 6 | 6 | 5 | 6 |
| Be happy to take the drug | 5 | 3 | 5 | 3 | 4 |
| Report the person to the Gardaí | 2 | 2 | 3 | 1 | 2 |
| Report the person to adult | 4 | 4 | 4 | 3 | 4 |
| Other | 14 | 9 | 11 | 11 | 11 |

Most respondents (83%) would point out the dangers of drug use to friends who had taken such substances. Far fewer (34%) however, would inform an adult. Females (87%) were more likely to advise their friends of the dangers of drug use than were males (78%) and were also more likely to inform an adult (M=29%, F=39%).

Table 5.23: Action taken if friends took drugs

| Action | 2 nd Year | 5 th Year | Male | Female | All Students |
|-------------------------|----------------------|----------------------|------|--------|--------------|
| | % | % | % | % | % |
| Point out dangers | 83 | 83 | 78 | 87 | 83 |
| Tell adult if friend... | 36 | 32 | 29 | 39 | 34 |

Disapproval of drug use becomes increasingly marked as frequency of use increases. 45 percent of respondents strongly disapprove of using cannabis once or twice, a figure that increases to 59 percent for regular use of the substance. Similar trends emerge for attitudes towards LSD and ecstasy use.

Table 5.24: Approval and disapproval of people taking drugs

| Activity | Don't disapprove | Disapprove | Strongly disapprove | Don't know | Total |
|-------------------------|------------------|------------|---------------------|------------|-------|
| | % | % | % | % | % |
| Cannabis once or twice | 28 | 22 | 45 | 4 | 100 |
| Cannabis on occasions | 18 | 27 | 51 | 4 | 100 |
| Cannabis regularly | 12 | 26 | 59 | 4 | 100 |
| LSD once or twice | 10 | 27 | 58 | 5 | 100 |
| LSD more often | 7 | 24 | 64 | 5 | 100 |
| Ecstasy once or twice | 9 | 23 | 64 | 4 | 100 |
| Ecstasy more often | 6 | 22 | 68 | 4 | 100 |
| Inhalants once or twice | 13 | 26 | 56 | 5 | 100 |

More than seven in ten respondents believe that regular use of LSD (76%), amphetamines (72%), inhalants (72%) or cannabis (71%) pose a great risk to users. Cocaine/crack (82%) and ecstasy (84%) are perceived to present an even greater risk.

Table 5.25: Perceived risk of taking drugs

| Type of Drug Use | No risk | Slight risk | Moderate risk | Great risk | Don't know | Total |
|--------------------------|---------|-------------|---------------|------------|------------|-------|
| | % | % | % | % | % | % |
| Smoke cannabis regularly | 2 | 6 | 15 | 71 | 5 | 100 |
| LSD regularly | 1 | 3 | 9 | 76 | 11 | 100 |
| Amphetamines regularly | 1 | 3 | 8 | 72 | 16 | 100 |
| Cocaine/crack regularly | 1 | 2 | 8 | 82 | 7 | 100 |
| Ecstasy regularly | 1 | 2 | 6 | 84 | 7 | 100 |
| Inhalants regularly | 2 | 4 | 15 | 72 | 7 | 100 |

Drugs-related Education

Twenty one percent of Kerry students sampled reported that they had never received drug-related education during school hours. Forty two percent believed that either a little more (19%) or a lot more (23%) information was needed. Thirty eight percent of those surveyed maintained that they had received information on drugs from sources outside the school environment (see Table 5.27).

Table 5.26: School drug education by school year

| Level of information provided | 2 nd Year | 5 th Year | All Students |
|-------------------------------|----------------------|----------------------|--------------|
| | % | % | % |
| Enough Information given | 27 | 35 | 31 |
| A little more information | 23 | 16 | 19 |
| A lot more information needed | 24 | 22 | 23 |
| No information given | 20 | 22 | 21 |
| Don't know | 6 | 5 | 5 |

Table 5.27: Information given outside of school

| Information given outside of school | 2 nd Year | 5 th Year | All Subjects |
|-------------------------------------|----------------------|----------------------|--------------|
| | % | % | % |
| Yes | 43 | 32 | 38 |

Conclusion

As with subsequent chapters, it has been necessary to confine the above analysis to those questions and responses that provide the most comprehensive overview of alcohol, tobacco and drug use in Kerry Division. For those interested in additional information on TAD misuse in Kerry Division, we would refer them to Appendix F.

Three key findings emerge from this analysis:

- Sixty percent of second level students in Kerry Division have smoked at some stage in their lives and 19 percent can be considered regular smokers (i.e. smoke at least once a week);

- Seventy-five percent have drunk alcohol in the past and 53 percent had done so in the 30 days preceding the survey's administration and;
- Eighteen percent have taken drugs at some point in their lives.

These core findings and those presented in earlier chapters are briefly reviewed in the next chapter.

CHAPTER 6. **OVERVIEW AND CONCLUSION.**

Introduction

This chapter draws together some of the main results presented in the research chapters and compares findings to those reported in other surveys. It also addresses some of the limitations of the research and offers some recommendations for future studies in the area.

Overview of results.

The overall picture that emerges from this research is that a considerable proportion of second-level students in the two divisions sampled are regular smokers, drink alcohol and have taken drugs at some stage in their lives. For the combined sample, 24 percent smoke on a weekly basis and 23 percent have taken drugs in the past. It is also of some concern that 55 percent of respondents had consumed alcohol at some point in their lives and 39 percent of this group had been drunk in the 30 days preceding the survey's administration.

Forty-four percent reported consuming spirits on some occasion during the month preceding the survey. Key drinking environments included public houses, private residences and public areas and 30 percent had purchased alcohol in licensed premises.

It is alarming that 29 percent of post-primary students had 'wanted to try' drugs in the past - six percent more than have actually succeeded in doing so. Cannabis (89%) was overwhelmingly the substance first taken by users. Friends (70%) supply the majority of drugs taken by first-time users and residential homes, public parks and 'the street' were the most prevalent drug-taking environments. Most were motivated out of curiosity (63%), 28 percent wanted to 'feel high' and ten percent wanted to 'forget their problems'. Just 27 percent felt that they had received sufficient drugs-related education in school.

Females were more likely to have smoked on at least 40 occasions, more likely to smoke on a daily basis and less likely to have abstained from smoking throughout their lifetime than were males. They were also more likely to have consumed alcohol in the 30 days prior to the survey and to have been drunk. In contrast males were more likely to have taken drugs. In terms of age of students, the results were more predictable and consistent. On almost all constructs, 5th year students engaged in higher levels of TAD misuse than did 2nd Years.

The data also presents an opportunity to examine patterns of misuse across the two Garda divisions. At least for the core indicators of misuse, the data tends to suggest that levels of TAD misuse are higher in Waterford/Kilkenny than in Kerry (see Table 6.1). Differences for levels of regular smokers (W/K=26%, K=19%), drug misusers (WK=27%, K=18%) and cannabis misusers (W/K=22%, K=13%), were particularly marked.

Explaining these differences is difficult without further research but it is possible, to some extent at least, that they reflect the demographic characteristics of the samples. In contrast to the largely rural environments of Kerry Division, Waterford/Kilkenny Division has a number of urban centres. The impact of urban

environments on social behaviour is well documented and may account for the comparatively high levels of misuse in Waterford/Kilkenny.

Table 6.1: Key findings from the current research and some comparable results from surveys conducted by Heywood (1996) and the Mid-Western Health Board (1998).

| Activity | Current Study | | | Heywood (1996) | Mid-Western Health Board (1998) | | |
|---------------------------------------|---------------------|--------------|----------|----------------|---------------------------------|-----------------|-------|
| | Waterford /Kilkenny | Kerry | Combined | Tipperary | Limerick City | Limerick County | Clare |
| Have smoked | 58 | 60 | 59 | 69 | 58 | 50 | 62 |
| Regular/Current Smokers ¹¹ | 26 | 19 | 24 | 35 | 29 | 26 | 34 |
| Have drunk alcohol | 79 | 75 | 77 | 80 | 85 | 72 | 77 |
| Drank in last month | 57 | 53 | 55 | NA | NA | NA | NA |
| Are Drinkers | NA | NA | NA | NA | 71 | 57 | 66 |
| Have taken drugs | 27 | 18 | 23 | 28 | 33 | 19 | 29 |
| Have taken cannabis ¹² | 22 | 13 | 18 | 16 | 22 | 5 | 17 |

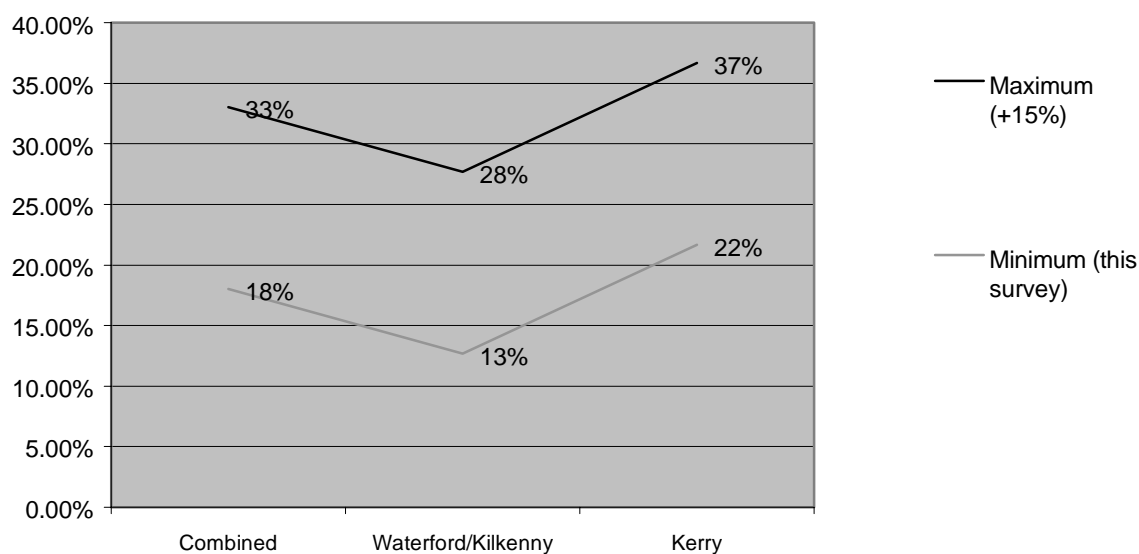
The levels of misuse that emerge from this research are broadly in line with those uncovered by similar surveys conducted by Heywood (1996) and the Mid-Western Health Board (MWHB) (1998). Combining these sources permits an examination of TAD misuse in Waterford/Kilkenny, Kerry, Tipperary, Limerick City, Limerick County and Clare (see Table 6.1), although only tentative comparisons can be made given that sample design and the questionnaire instrument differed across studies.¹³ Based on data provided in those reports, it would appear that particularly high levels of teenage smoking are present in Clare (34%) and Tipperary (35%). Those in Limerick City, the only urban sample represented, were most likely to have consumed alcohol in their life-time (85%). That sample also reported the highest levels of drug misuse (33%), although Waterford/Kilkenny had the same level of cannabis consumption (W/K=22%, Limerick City=22%).

¹¹ The Mid-Western Health Board survey provided data for the percentage of post-primary students who were 'smokers' at the time of the survey. For the present research, and that of Heywood, regular smokers were deemed to be those who smoked more than one cigarette per week.

¹² A number of questions used in the current survey facilitated identification of cannabis use. The figures for Waterford/Kilkenny Division (22%), Kerry Division (13%) and the Combined (18%) sample are based on the proportion of respondents who reported taking cannabis in both questions 34 and 39 in the survey. This approach promotes consistency and is more likely to provide a true reflection of levels of misuse than is possible from examining one single question (as noted in Chapter 2, for example, 22 percent of students reported that they had used cannabis in response to question 62).

¹³ It is important to note, however, that a number of factors undermine the confidence with which comparisons can be made. On one level, as questions are quite often slightly different across surveys, they inevitably measure slightly different facets of the same phenomenon. As illustrated in Table 6.1, for instance, the Mid-Western Health Board's (1998) survey permitted identification of those who 'are currently drinkers' whereas the current research, and that of Heywood (1996), only allowed for identification of those who had consumed alcohol in the past month. As the questions asked were quite different, they are largely incomparable. Second, the subject profile tends to differ across surveys and thus generate slightly different results. Heywoods' respondents were between the ages of 15 and 19, the MWHB and the current research used 2nd Year and pre-leaving Certificate students. Finally, trends differ over time and thus Heywood's (1996) and MWHB (1998) research may be an inaccurate reflection of the situation in 2002.

Figure 6.1: Levels of cannabis consumption reported in this survey adjusted to take account of a potential under-reporting of 15 percent.



Issues relating to the Research Methodology.

Much has been written on the difficulties encountered in conducting research on sensitive topics (see in particular Lee and Renzetti, 1993). In terms of the current study, the sensitive nature of the disclosures means that under-reporting is likely and results should be regarded as representing the lower end of misuse levels. This is particularly true given that subjects were being asked to report illegal behaviour in a survey organised by the Garda Síochána.

As noted in Chapter 2, some support for the presence of this under-reporting is evident from results suggesting that up to 15 percent of respondents would not report use of cannabis in the survey. Thus for cannabis smoking, the true representation is likely to fall between the reported percentage level (p) and that increased by 15 percent (p+15%, see figure 6.1.).

On the other hand, the possibility of over-reporting by some respondents cannot be excluded entirely, even when those who claim use of the 'dummy drug' relevelin are removed. For instance Table 5.14 (p. 37) would tend to suggest that 2 of the 9 respondents in 5th Year in Kerry Division who admitted taking cocaine, first did so when they were 11 or less. Similar indications of over-rating were present in other constructs, and whilst negligible in the context of the research as a whole, would, to a certain extent, mitigate the effects of under-reporting.

The Mid-Western Health Board (1998) identifies a number of additional methodological problems in research of this nature. They suggest that in addition to under-reporting, some students may actually over-report their involvement in TAD misuse. As with many similar surveys, the survey instrument employed in this research incorporated a 'dummy drug' ('relevelin') that facilitated identification of a significant number of over-raters who were subsequently excluded from the analysis. The general feedback from those tasked with analysis is that whilst some indication of over-raters remained following data cleaning, the number of respondents was small and had a negligible impact on the overall picture emerging from the research.

Two additional comments made in the Mid-Western Health Board are of greater relevance to this research. As with their survey, this research used a 'one-shot' design and thus may have led to an under-representation of school truants in the sample pool. Another high-risk group underrepresented is early school leavers. Finally, whilst surveying 2nd Year and 5th Year students offers an excellent overview of misuse levels, there is a need to survey students at all stages in their academic careers. Such research would provide important insights into changing behaviours and attitudes over time.

Recommendations and conclusion.

This research has offered a valuable insight into tobacco, alcohol and drug use by second-level school students in the Waterford/Kilkenny and Kerry divisions. As to whether or not similar research across the 25 Garda Divisions would offer tangible benefits merits further consideration. On one hand a considerable volume of research data is already available on a national level, and increasingly, on a county level and is certainly sufficient to guide policy making by the Garda Síochána. On a second level, however, it is likely that the extent of misuse differs between geo-specific locations and divisional research would allow national strategies to be modified to suit the needs of specific communities.

In terms of the practical implications of this research, a number of recommendations can be offered. First, and in terms of education, whilst it is possible that students under-reported the level of drugs and alcohol related information provided in school settings or in residential homes, it would appear that more energy needs to be invested in this area. The dangers of alcohol and drug dependence need to be impressed on students and misuse demystified in order to promote positive attitudes and decrease the number of those who 'want to try drugs' - currently exceeding 25 percent in the two divisions surveyed.

In terms of misuse environments, residential homes, public houses and public areas emerge as important aspects of teenage misuse suggesting that those tasked with monitoring behaviours, such as the Garda Síochána, publicans, parents and other supervisors, need to remain vigilant. Where necessary, awareness of the importance of monitoring and controlling access should be promoted through education.

Bibliography.

Bryan, Audrey., Moran, Rosalyn., Farrell, Eimear and O'Brien, Mary. (2000). *Drug-Related Knowledge, Attitudes and Beliefs in Ireland: Report of a Nation-Wide Survey*, Dublin: The Health Research Board.

EMCDDA. (2002). *2002: Annual Report on the State of the drugs problem in the European Union and Norway*, Italy: European Monitoring Centre for Drugs and Drug Addiction (EMCDDA).

ESPAD. (1999). ESPAD Study: Implications for Prevention, *Drugs: education, prevention and policy*, Vol 6 (2).

Grube, J.W and Morgan, M. (1986). *Smoking, Drinking and other drug use among Dublin post-primary school pupils*, Dublin: Economic and Social Research Institute (ESRI).

Grube, J.W and Morgan, M. (1990). *The Development and Maintenance of Smoking, Drinking and other Drug Use among Dublin Post-Primary Pupils*, Dublin: Economic and Social Research Institute (ESRI).

Heywood, Sarah. (1996). *Survey of Tipperary Post-Primary Students' Views and Experiences of illegal Drugs, 1995-1996*, Tipperary: Garda Research Unit Report No 3/96.

Hibell, B., Andersson, B., Bjarnason, T., Kokkevi, A., Morgan, M and Narusk, A. (1997). *The 1995 ESPAD Report: Alcohol and Other Drug Use among Students in 26 European Countries*, Stockholm: CAN.

Hibell, B., Anderson, B., Ahlstrom, S., Bjarnason, T., Balakireva, O., Kokkevi, A and Morgan, M. (2001). *The 1999 ESPAD Report: Alcohol and Other Drug Use among Students in 30 European Countries*, Stockholm: CAN.

Jackson, T. (1997). *Smoking, Alcohol and Drug use in Cork and Kerry*, Unpublished document of the Southern Health Board.

Kiernan, R. (1995). Thesis on substance use among adolescents in the Western Health Board Area, cited in Mid-Western Health Board (1998), *Teenage Smoking, Alcohol and Drug Use in the Mid-Western Health Board Region*, Unpublished Document.

Mid-Western Health Board. (1998). *Teenage Smoking, Alcohol and Drug Use in the Mid-Western Health Board Region*, Unpublished Document.

Morgan, Mark and Grube, J. W. (1994). *Drinking Among Post-Primary School Pupils*, Dublin: The Economic and Social Research Institute (ESRI).

Lee, Raymond and Renzetti, Claire. M. (1993). The problems of Researching Sensitive Topics: An Overview and Introduction. Chapter in Claire Renzetti and Raymond M. Lee (Eds.), *Researching Sensitive Topics*, London: Sage Publications.

Shaughnessy, J. J and Zechmeister, E. B. (1990). *Research Methods in Psychology*, London: McGraw-Hill Publishing Company.

APPENDIX A.
Sample Profile.

A.1: Gender profile of sample for all subjects and by division.

| Gender | All Subjects | | Waterford/Kilkenny | | Kerry | |
|--------|--------------|------|--------------------|------|-------|------|
| | n | % | n | % | n | % |
| Male | 1591 | 52.4 | 850 | 49.6 | 741 | 56.0 |
| Female | 1447 | 47.6 | 865 | 50.4 | 582 | 44.0 |
| Total | 3038 | 100 | 1715 | 100 | 1323 | 100 |

missing values = 2.

A.2: Age profile of sample for all subjects and by division

| Year Born | All Subjects | | Waterford/Kilkenny | | Kerry | |
|-----------|--------------|------|--------------------|------|-------|------|
| | n | % | n | % | n | % |
| 1983 | 24 | 0.8 | 14 | 0.8 | 10 | 0.8 |
| 1984 | 248 | 8.2 | 197 | 11.6 | 51 | 3.9 |
| 1985 | 804 | 26.6 | 379 | 22.2 | 425 | 32.3 |
| 1986 | 436 | 14.4 | 223 | 13.1 | 213 | 16.2 |
| 1987 | 939 | 31.1 | 489 | 28.7 | 450 | 34.2 |
| 1988 | 561 | 18.6 | 395 | 23.2 | 166 | 12.6 |
| 1989 | 10 | 0.3 | 8 | 0.5 | 2 | 0.2 |
| Total | 3022 | 100 | 1705 | 100 | 1317 | 100 |

missing values = 18

A.3: School days missed by all subjects and reasons for absence.

| Days missed | Skipped or mitched | | Other reasons | | Illness | |
|----------------|--------------------|------|---------------|------|---------|------|
| | n | % | n | % | N | % |
| None | 1788 | 81.6 | 1244 | 51.1 | 1184 | 44.0 |
| 1 day | 167 | 7.6 | 448 | 18.4 | 394 | 14.6 |
| 2 days | 106 | 4.8 | 316 | 13.0 | 413 | 15.3 |
| 3-4 days | 48 | 2.2 | 215 | 8.8 | 398 | 14.8 |
| 5-6 days | 31 | 1.4 | 75 | 3.1 | 147 | 5.5 |
| 7 days or more | 50 | 2.3 | 135 | 5.5 | 156 | 5.8 |
| Total | 2190 | 100 | 2433 | 100 | 2692 | 100 |

A.4: School days missed by subjects and reasons for absence, by division

| Days missed | Waterford/Kilkenny | | | Kerry | | |
|----------------|--------------------|---------------|----------|--------------------|---------------|----------|
| | Skipped or mitched | Other reasons | Illness? | Skipped or mitched | Other reasons | Illness? |
| | % | % | % | % | % | % |
| None | 81.5 | 54.4 | 43.2 | 81.9 | 47.1 | 45.0 |
| 1 day | 7.1 | 17.8 | 14.6 | 8.3 | 19.2 | 14.6 |
| 2 days | 5.4 | 11.9 | 15.8 | 4.1 | 14.3 | 14.7 |
| 3-4 days | 2.3 | 8.1 | 14.5 | 2.0 | 9.7 | 15.1 |
| 5-6 days | 1.5 | 3.6 | 5.7 | 1.4 | 2.4 | 5.1 |
| 7 days or more | 2.3 | 4.2 | 6.1 | 2.3 | 7.3 | 5.4 |
| Total | 100.0 | 100.0 | 100.0 | 100.0 | 100.0 | 100.0 |

A.5: Average grade last term for all subjects and by division.

| Grade | All Subjects | | Waterford/Kilkenny | | Kerry | |
|-------|--------------|-------|--------------------|-------|-------|-------|
| | n | % | n | % | n | % |
| A | 245 | 8.1 | 148 | 8.7 | 97 | 7.4 |
| B | 1121 | 37.3 | 643 | 37.8 | 478 | 36.6 |
| C | 1345 | 44.7 | 738 | 43.4 | 607 | 46.5 |
| D | 256 | 8.5 | 153 | 9.0 | 103 | 7.9 |
| E | 40 | 1.3 | 20 | 1.2 | 20 | 1.5 |
| Total | 3007 | 100.0 | 1702 | 100.0 | 1305 | 100.0 |

Missing values = 33

A.6: School situation in relation to being a boarder, day student or other for all subjects and by division

| Situation | All Subjects | | Waterford/Kilkenny | | Kerry | |
|---------------------------------------|--------------|------|--------------------|------|-------|------|
| | n | % | n | % | n | % |
| A full boarder in a boarding school | 113 | 4.2 | 38 | 2.4 | 75 | 6.6 |
| A day pupil in a boarding school | 106 | 3.9 | 55 | 3.5 | 51 | 4.5 |
| In a school that does not do boarding | 2441 | 90.2 | 1453 | 92.9 | 988 | 86.6 |
| Other | 45 | 1.7 | 18 | 1.2 | 27 | 2.4 |
| Total | 2705 | 100 | 1564 | 100 | 1141 | 100 |

Missing values = 335

A.7: Where subjects live, by division and for all subjects.

| Residential Environment | All Subjects | | Waterford/Kilkenny | | Kerry | |
|-------------------------|--------------|-------|--------------------|-------|-------|-------|
| | n | % | n | % | n | % |
| Dublin | 29 | 1.1 | 14 | 0.9 | 15 | 1.2 |
| Other city | 398 | 14.5 | 367 | 23.7 | 31 | 2.6 |
| Large town | 290 | 10.5 | 114 | 7.4 | 176 | 14.6 |
| Small town | 608 | 22.1 | 354 | 22.9 | 254 | 21.1 |
| Village | 609 | 22.2 | 317 | 20.5 | 292 | 24.3 |
| Rural | 815 | 29.6 | 380 | 24.6 | 435 | 36.2 |
| Total | 2749 | 100.0 | 1546 | 100.0 | 1203 | 100.0 |

Missing values = 291

A.8: Students who have part-time jobs for all subjects and by division

| Part time jobs | All Subjects | | Waterford/Kilkenny | | Kerry | |
|----------------|--------------|-------|--------------------|-------|-------|-------|
| | n | % | n | % | n | % |
| Yes | 1347 | 47.6 | 735 | 45.4 | 612 | 50.6 |
| No | 1481 | 52.4 | 884 | 54.6 | 597 | 49.4 |
| Total | 2828 | 100.0 | 1619 | 100.0 | 1209 | 100.0 |

Missing Values = 212

A.9: Amount of money earned each week, by division and for all subjects

| Money earned | All Subjects | | Waterford/Kilkenny | | Kerry | |
|----------------|--------------|-------|--------------------|-------|-------|------|
| | n | % | n | % | n | % |
| Under £10 | 487 | 17.9 | 285 | 18.3 | 202 | 17.4 |
| £11-£20 | 563 | 20.7 | 363 | 23.4 | 200 | 17.2 |
| £21 - £30 | 373 | 13.7 | 232 | 14.9 | 141 | 12.1 |
| £31 - £50 | 373 | 13.7 | 216 | 13.9 | 157 | 13.5 |
| £51 - £75 | 224 | 8.2 | 130 | 8.4 | 94 | 8.1 |
| £76 -£100 | 197 | 7.3 | 102 | 6.6 | 95 | 8.2 |
| More than £100 | 240 | 8.8 | 97 | 6.2 | 143 | 12.3 |
| Not applicable | 258 | 9.5 | 129 | 8.3 | 129 | 11.1 |
| Total | 2715 | 100.0 | 1554 | 100.0 | 1161 | 99.9 |

Missing Values = 325

APPENDIX B: THE QUESTIONNAIRE EMPLOYED.

The first questions ask for some background information about yourself.

1. What is your sex? Male ₁ Female ₂

2. In what year were you born? 19_____

3. How often, if at all, do you do each of the following? (Please tick one box for **each** line)

| Activity | Never | A few times a year | Once or twice a month | At least once a week | Every or almost every day |
|---|---------------------------------------|---------------------------------------|---------------------------------------|---------------------------------------|---------------------------------------|
| Play computer games | <input type="checkbox"/> ₁ | <input type="checkbox"/> ₂ | <input type="checkbox"/> ₃ | <input type="checkbox"/> ₄ | <input type="checkbox"/> ₅ |
| Actively participate in sports, athletics or exercising | <input type="checkbox"/> ₁ | <input type="checkbox"/> ₂ | <input type="checkbox"/> ₃ | <input type="checkbox"/> ₄ | <input type="checkbox"/> ₅ |
| Read books for enjoyment (do not count schoolbooks) | <input type="checkbox"/> ₁ | <input type="checkbox"/> ₂ | <input type="checkbox"/> ₃ | <input type="checkbox"/> ₄ | <input type="checkbox"/> ₅ |
| Go out in the evening (to a disco, cafe, party, etc.) | <input type="checkbox"/> ₁ | <input type="checkbox"/> ₂ | <input type="checkbox"/> ₃ | <input type="checkbox"/> ₄ | <input type="checkbox"/> ₅ |
| Other hobbies (sing, play an instrument, draw, write, etc.) | <input type="checkbox"/> ₁ | <input type="checkbox"/> ₂ | <input type="checkbox"/> ₃ | <input type="checkbox"/> ₄ | <input type="checkbox"/> ₅ |

4. During the **LAST 30 DAYS** how many whole days of school have you missed? (Please tick one box for **each** line)

| Reason | None | 1 day | 2 days | 3-4 days | 5-6 days | 7 days or more |
|----------------------------------|---------------------------------------|---------------------------------------|---------------------------------------|---------------------------------------|---------------------------------------|---------------------------------------|
| Because of illness | <input type="checkbox"/> ₁ | <input type="checkbox"/> ₂ | <input type="checkbox"/> ₃ | <input type="checkbox"/> ₄ | <input type="checkbox"/> ₅ | <input type="checkbox"/> ₆ |
| Because you skipped or "mitched" | <input type="checkbox"/> ₁ | <input type="checkbox"/> ₂ | <input type="checkbox"/> ₃ | <input type="checkbox"/> ₄ | <input type="checkbox"/> ₅ | <input type="checkbox"/> ₆ |
| For other reasons | <input type="checkbox"/> ₁ | <input type="checkbox"/> ₂ | <input type="checkbox"/> ₃ | <input type="checkbox"/> ₄ | <input type="checkbox"/> ₅ | <input type="checkbox"/> ₆ |

5. Which of the following best describes your average grade in the end of the last term? (Please tick one box only)

- ₁ A
- ₂ B
- ₃ C
- ₄ D
- ₅ E

The next major section of this questionnaire deals with cigarettes and alcohol.

6. On how many occasions, if any, have you smoked cigarettes ? (Please tick one box only)

| Number of occasions | | | | | | |
|---------------------------------------|---------------------------------------|---------------------------------------|---------------------------------------|---------------------------------------|---------------------------------------|---------------------------------------|
| 0 | 1-2 | 3-5 | 6-9 | 10-19 | 20-39 | 40 or more |
| <input type="checkbox"/> ₁ | <input type="checkbox"/> ₂ | <input type="checkbox"/> ₃ | <input type="checkbox"/> ₄ | <input type="checkbox"/> ₅ | <input type="checkbox"/> ₆ | <input type="checkbox"/> ₇ |

7. How frequently have you smoked cigarettes during the LAST 30 DAYS ? (Please tick one box only)

- ₁ Not at all
- ₂ Less than 1 cigarette per week
- ₃ Less than 1 cigarette per day
- ₄ 1-5 cigarettes per day
- ₅ 6-10 cigarettes per day
- ₆ 11-20 cigarettes per day
- ₇ More than 20 cigarettes per day

8. On how many occasions (if any) have you had a whole alcoholic beverage to drink ?
(Please tick one box for each line)

| When | Number of occasions | | | | | | |
|------------------------------|---------------------------------------|---------------------------------------|---------------------------------------|---------------------------------------|---------------------------------------|---------------------------------------|---------------------------------------|
| | 0 | 1-2 | 3-5 | 6-9 | 10-19 | 20-39 | 40 or more |
| In your lifetime | <input type="checkbox"/> ₁ | <input type="checkbox"/> ₂ | <input type="checkbox"/> ₃ | <input type="checkbox"/> ₄ | <input type="checkbox"/> ₅ | <input type="checkbox"/> ₆ | <input type="checkbox"/> ₇ |
| During the last three Months | <input type="checkbox"/> ₁ | <input type="checkbox"/> ₂ | <input type="checkbox"/> ₃ | <input type="checkbox"/> ₄ | <input type="checkbox"/> ₅ | <input type="checkbox"/> ₆ | <input type="checkbox"/> ₇ |
| During the last month | <input type="checkbox"/> ₁ | <input type="checkbox"/> ₂ | <input type="checkbox"/> ₃ | <input type="checkbox"/> ₄ | <input type="checkbox"/> ₅ | <input type="checkbox"/> ₆ | <input type="checkbox"/> ₇ |

9. When did you last take an alcoholic drink? (**Please tick one answer only**)

- ₁ **Within the last few days**
- ₂ **Within the last two weeks**
- ₃ **Within the last month**
- ₄ **Within the last three months**
- ₅ **Within the last six months**
- ₆ **Within the last nine months**
- ₇ **Within the last year**

10. Think back over the LAST 30 DAYS. On how many occasions, if any, have you had any of the following to drink? **(Please tick one box for each line)**

| Type of drink | Number of occasions | | | | | | |
|---|---------------------------------------|---------------------------------------|---------------------------------------|---------------------------------------|---------------------------------------|---------------------------------------|---------------------------------------|
| | 0 | 1-2 | 3-5 | 6-9 | 10-19 | 20-39 | 40 or more |
| Beer (do not include low alcohol beer) | <input type="checkbox"/> ₁ | <input type="checkbox"/> ₂ | <input type="checkbox"/> ₃ | <input type="checkbox"/> ₄ | <input type="checkbox"/> ₅ | <input type="checkbox"/> ₆ | <input type="checkbox"/> ₇ |
| Wine | <input type="checkbox"/> ₁ | <input type="checkbox"/> ₂ | <input type="checkbox"/> ₃ | <input type="checkbox"/> ₄ | <input type="checkbox"/> ₅ | <input type="checkbox"/> ₆ | <input type="checkbox"/> ₇ |
| Spirits (whiskey, brandy, shot drinks, etc.) | <input type="checkbox"/> ₁ | <input type="checkbox"/> ₂ | <input type="checkbox"/> ₃ | <input type="checkbox"/> ₄ | <input type="checkbox"/> ₅ | <input type="checkbox"/> ₆ | <input type="checkbox"/> ₇ |
| Cider | <input type="checkbox"/> ₁ | <input type="checkbox"/> ₂ | <input type="checkbox"/> ₃ | <input type="checkbox"/> ₄ | <input type="checkbox"/> ₅ | <input type="checkbox"/> ₆ | <input type="checkbox"/> ₇ |
| Breezers/Alcopops (alcoholic fruit drinks) | <input type="checkbox"/> ₁ | <input type="checkbox"/> ₂ | <input type="checkbox"/> ₃ | <input type="checkbox"/> ₄ | <input type="checkbox"/> ₅ | <input type="checkbox"/> ₆ | <input type="checkbox"/> ₇ |

11. Think of the LAST DAY on which you drank alcohol. Where were you when you drank? **(Please tick one answer only)**

- ₁ **Have never had an alcoholic drink**
 - ₂ **At home**
 - ₃ **At someone else's home**
 - ₄ **Out on the street, in a park, beach or other open area**
 - ₅ **At a bar or a pub**
 - ₆ **In a disco**
 - ₇ **In a restaurant**
 - ₈ **Other (please describe)**
-

12. The last time you had an alcoholic drink, with whom did you drink? **(Please tick one answer only)**

- ₁ **Have never been drinking alcohol**
 - ₂ **On your own**
 - ₃ **With parents**
 - ₄ **With brother/sister**
 - ₅ **With other relative**
 - ₆ **With friends**
 - ₇ **With my boyfriend/girlfriend**
 - ₈ **Other (please describe)**
-

13. The last time you had an alcoholic drink, where did you get the alcohol? **(Please tick all that apply)**

- ₁ **I never drink alcohol**
 - ₂ **I bought it in a supermarket**
 - ₃ **I bought it in a pub**
 - ₄ **I bought it in a disco**
 - ₅ **Home, with permission**
 - ₆ **Home, without permission**
 - ₇ **From friends (adult friends)**
 - ₈ **From friends (of your own age)**
 - ₉ **Off-licence**
 - ₁₀ **Other (please describe)**
-

14. Have you ever sought to buy alcohol in the last 12 months and been refused?

Yes 1 No 2

(Please tick all that apply)

- 1 Supermarket
 - 2 Pub
 - 3 Disco
 - 4 Off-licence
 - 5 Other (please specify)
-

15. Think back over the LAST 30 DAYS. On how many occasions, if any, have you had FIVE OR MORE alcoholic drinks in a row? (A “drink” is a glass of wine, bottle/can or pint of beer or cider, a small glass of spirits or a mixed drink.) **(Please tick one answer only)**

- 1 **None**
- 2 **1**
- 3 **2**
- 4 **3-5**
- 5 **6-9**
- 6 **10 or more**

16. Have you ever been drinking on TWO OR MORE SUCCESSIVE DAYS in the past year? **(Please tick one answer only)**

- 1 **Never**
- 2 **1-2 times in the year**
- 3 **3-5 times in the year**
- 4 **6-10 occasions in the year**
- 5 **About once a month**
- 6 **2-3 occasions a month**
- 7 **More often**

17. On how many occasions, if any, have you been drunk from drinking alcoholic beverages? **(Please tick one box for each line)**

| When | Number of occasions | | | | | | |
|------------------------------|---------------------------------------|---------------------------------------|---------------------------------------|---------------------------------------|---------------------------------------|---------------------------------------|---------------------------------------|
| | 0 | 1-2 | 3-5 | 6-9 | 10-19 | 20-39 | 40 or more |
| In your lifetime | <input type="checkbox"/> ₁ | <input type="checkbox"/> ₂ | <input type="checkbox"/> ₃ | <input type="checkbox"/> ₄ | <input type="checkbox"/> ₅ | <input type="checkbox"/> ₆ | <input type="checkbox"/> ₇ |
| During the last three months | <input type="checkbox"/> ₁ | <input type="checkbox"/> ₂ | <input type="checkbox"/> ₃ | <input type="checkbox"/> ₄ | <input type="checkbox"/> ₅ | <input type="checkbox"/> ₆ | <input type="checkbox"/> ₇ |
| During the last 30 days | <input type="checkbox"/> ₁ | <input type="checkbox"/> ₂ | <input type="checkbox"/> ₃ | <input type="checkbox"/> ₄ | <input type="checkbox"/> ₅ | <input type="checkbox"/> ₆ | <input type="checkbox"/> ₇ |

18. Please indicate on a scale from 1 to 10 how drunk you would say you were the LAST TIME you were drunk. **(Please tick one box only)**

Somewhat
merry only

Unable to stand
on my feet

1 2 3 4 5 6 7 8 9 10

11 I have never been
 drunk

19. How many alcoholic drinks do you usually need to get drunk? (A "drink" is a glass of wine, a bottle/can/pint of beer or cider, a small glass of spirits, or a mixed drink). **(Please tick one box only)**

- ₁ I never drink alcohol
- ₂ I have never been drunk
- ₃ 1-2 drinks
- ₄ 3-4 drinks
- ₅ 5-6 drinks
- ₆ 7-8 drinks
- ₇ 9-10 drinks
- ₈ 11-12 drinks
- ₉ 13 drinks or more

20. How often has each of the following ever happened to you? **(Please tick one answer for each type of occurrence).**

| How often have you | Never | Once | 2-3 times | 4-5 times | 6-9 times | 10 or more times |
|--|---------------------------------------|---------------------------------------|---------------------------------------|---------------------------------------|---------------------------------------|---------------------------------------|
| Got into trouble with parents for drinking? | <input type="checkbox"/> ₁ | <input type="checkbox"/> ₂ | <input type="checkbox"/> ₃ | <input type="checkbox"/> ₄ | <input type="checkbox"/> ₅ | <input type="checkbox"/> ₆ |
| Got into trouble with the Gardaí for drinking? | <input type="checkbox"/> ₁ | <input type="checkbox"/> ₂ | <input type="checkbox"/> ₃ | <input type="checkbox"/> ₄ | <input type="checkbox"/> ₅ | <input type="checkbox"/> ₆ |
| Missed school because of drinking? | <input type="checkbox"/> ₁ | <input type="checkbox"/> ₂ | <input type="checkbox"/> ₃ | <input type="checkbox"/> ₄ | <input type="checkbox"/> ₅ | <input type="checkbox"/> ₆ |
| Got physically sick (vomited) while drinking? | <input type="checkbox"/> ₁ | <input type="checkbox"/> ₂ | <input type="checkbox"/> ₃ | <input type="checkbox"/> ₄ | <input type="checkbox"/> ₅ | <input type="checkbox"/> ₆ |
| Gone to school feeling drunk? | <input type="checkbox"/> ₁ | <input type="checkbox"/> ₂ | <input type="checkbox"/> ₃ | <input type="checkbox"/> ₄ | <input type="checkbox"/> ₅ | <input type="checkbox"/> ₆ |
| Been unable to remember some of the things you did while drinking? | <input type="checkbox"/> ₁ | <input type="checkbox"/> ₂ | <input type="checkbox"/> ₃ | <input type="checkbox"/> ₄ | <input type="checkbox"/> ₅ | <input type="checkbox"/> ₆ |
| Passed out while drinking? | <input type="checkbox"/> ₁ | <input type="checkbox"/> ₂ | <input type="checkbox"/> ₃ | <input type="checkbox"/> ₄ | <input type="checkbox"/> ₅ | <input type="checkbox"/> ₆ |
| Driven a car or motorcycle after drinking? | <input type="checkbox"/> ₁ | <input type="checkbox"/> ₂ | <input type="checkbox"/> ₃ | <input type="checkbox"/> ₄ | <input type="checkbox"/> ₅ | <input type="checkbox"/> ₆ |
| Ridden a bicycle just after drinking? | <input type="checkbox"/> ₁ | <input type="checkbox"/> ₂ | <input type="checkbox"/> ₃ | <input type="checkbox"/> ₄ | <input type="checkbox"/> ₅ | <input type="checkbox"/> ₆ |
| Engaged in sexual activities whilst under the influence of alcohol or drugs? | <input type="checkbox"/> ₁ | <input type="checkbox"/> ₂ | <input type="checkbox"/> ₃ | <input type="checkbox"/> ₄ | <input type="checkbox"/> ₅ | <input type="checkbox"/> ₆ |

21. How likely is it that each of the following things would happen to you personally, if you drank alcohol? **(Please tick one box for each line)**

| Outcome | Very Likely | Likely | Unsure | Unlikely | Very unlikely |
|---------------------------------|---------------------------------------|---------------------------------------|---------------------------------------|---------------------------------------|---------------------------------------|
| Feel relaxed | <input type="checkbox"/> ₁ | <input type="checkbox"/> ₂ | <input type="checkbox"/> ₃ | <input type="checkbox"/> ₄ | <input type="checkbox"/> ₅ |
| Harm my health | <input type="checkbox"/> ₁ | <input type="checkbox"/> ₂ | <input type="checkbox"/> ₃ | <input type="checkbox"/> ₄ | <input type="checkbox"/> ₅ |
| Feel happy | <input type="checkbox"/> ₁ | <input type="checkbox"/> ₂ | <input type="checkbox"/> ₃ | <input type="checkbox"/> ₄ | <input type="checkbox"/> ₅ |
| Forget my problems | <input type="checkbox"/> ₁ | <input type="checkbox"/> ₂ | <input type="checkbox"/> ₃ | <input type="checkbox"/> ₄ | <input type="checkbox"/> ₅ |
| Not be able to stop drinking | <input type="checkbox"/> ₁ | <input type="checkbox"/> ₂ | <input type="checkbox"/> ₃ | <input type="checkbox"/> ₄ | <input type="checkbox"/> ₅ |
| Get a hangover | <input type="checkbox"/> ₁ | <input type="checkbox"/> ₂ | <input type="checkbox"/> ₃ | <input type="checkbox"/> ₄ | <input type="checkbox"/> ₅ |
| Feel more friendly and outgoing | <input type="checkbox"/> ₁ | <input type="checkbox"/> ₂ | <input type="checkbox"/> ₃ | <input type="checkbox"/> ₄ | <input type="checkbox"/> ₅ |
| Do something I would regret | <input type="checkbox"/> ₁ | <input type="checkbox"/> ₂ | <input type="checkbox"/> ₃ | <input type="checkbox"/> ₄ | <input type="checkbox"/> ₅ |
| Have a lot of fun | <input type="checkbox"/> ₁ | <input type="checkbox"/> ₂ | <input type="checkbox"/> ₃ | <input type="checkbox"/> ₄ | <input type="checkbox"/> ₅ |

| | | | | | |
|-----------|---------------------------------------|---------------------------------------|---------------------------------------|---------------------------------------|---------------------------------------|
| Feel sick | <input type="checkbox"/> ₁ | <input type="checkbox"/> ₂ | <input type="checkbox"/> ₃ | <input type="checkbox"/> ₄ | <input type="checkbox"/> ₅ |
|-----------|---------------------------------------|---------------------------------------|---------------------------------------|---------------------------------------|---------------------------------------|

22. How much would each of the following people disapprove if you were to have 2 or 3 alcoholic drinks? (Please tick one answer for **each** type of person)

| Person | Strongly | A little | Not at all | No such person |
|---------------------------------|---------------------------------------|---------------------------------------|---------------------------------------|---------------------------------------|
| Mother/stepmother/foster mother | <input type="checkbox"/> ₁ | <input type="checkbox"/> ₂ | <input type="checkbox"/> ₃ | <input type="checkbox"/> ₄ |
| Father/stepfather/foster father | <input type="checkbox"/> ₁ | <input type="checkbox"/> ₂ | <input type="checkbox"/> ₃ | <input type="checkbox"/> ₄ |
| Grandparent(s) | <input type="checkbox"/> ₁ | <input type="checkbox"/> ₂ | <input type="checkbox"/> ₃ | <input type="checkbox"/> ₄ |
| Best friend | <input type="checkbox"/> ₁ | <input type="checkbox"/> ₂ | <input type="checkbox"/> ₃ | <input type="checkbox"/> ₄ |
| Other good friends | <input type="checkbox"/> ₁ | <input type="checkbox"/> ₂ | <input type="checkbox"/> ₃ | <input type="checkbox"/> ₄ |
| Most students my age at school | <input type="checkbox"/> ₁ | <input type="checkbox"/> ₂ | <input type="checkbox"/> ₃ | <input type="checkbox"/> ₄ |
| Older brother(s)/sister(s) | <input type="checkbox"/> ₁ | <input type="checkbox"/> ₂ | <input type="checkbox"/> ₃ | <input type="checkbox"/> ₄ |

23. About how often did each of the following go drinking (including drinking at home) in the PAST YEAR? (Please tick one answer for **each** type of person)

| How often | Mother, stepmother etc. | Father, stepfather, etc. | Best friend | Other good friend | Most students my age at school |
|----------------------|---------------------------------------|---------------------------------------|---------------------------------------|---------------------------------------|---------------------------------------|
| Not at all | <input type="checkbox"/> ₁ | <input type="checkbox"/> ₁ | <input type="checkbox"/> ₁ | <input type="checkbox"/> ₁ | <input type="checkbox"/> ₁ |
| An odd time | <input type="checkbox"/> ₂ | <input type="checkbox"/> ₂ | <input type="checkbox"/> ₂ | <input type="checkbox"/> ₂ | <input type="checkbox"/> ₂ |
| About once a month | <input type="checkbox"/> ₃ | <input type="checkbox"/> ₃ | <input type="checkbox"/> ₃ | <input type="checkbox"/> ₃ | <input type="checkbox"/> ₃ |
| 2-3 times a month | <input type="checkbox"/> ₄ | <input type="checkbox"/> ₄ | <input type="checkbox"/> ₄ | <input type="checkbox"/> ₄ | <input type="checkbox"/> ₄ |
| 1-2 times a week | <input type="checkbox"/> ₅ | <input type="checkbox"/> ₅ | <input type="checkbox"/> ₅ | <input type="checkbox"/> ₅ | <input type="checkbox"/> ₅ |
| Several times a week | <input type="checkbox"/> ₆ | <input type="checkbox"/> ₆ | <input type="checkbox"/> ₆ | <input type="checkbox"/> ₆ | <input type="checkbox"/> ₆ |
| Every day | <input type="checkbox"/> ₇ | <input type="checkbox"/> ₇ | <input type="checkbox"/> ₇ | <input type="checkbox"/> ₇ | <input type="checkbox"/> ₇ |

24. Please read each statement and decide on the extent to which you agree or disagree with the statement (Please tick **one answer for each statement**)

| Statement | Strongly agree | Agree | Neither agree or disagree | Disagree | Strongly disagree |
|--|---------------------------------------|---------------------------------------|---------------------------------------|---------------------------------------|---------------------------------------|
| It is easy to obtain alcoholic drinks | <input type="checkbox"/> ₁ | <input type="checkbox"/> ₂ | <input type="checkbox"/> ₃ | <input type="checkbox"/> ₄ | <input type="checkbox"/> ₅ |
| A lot of young people drink alcohol just to keep up with their friends | <input type="checkbox"/> ₁ | <input type="checkbox"/> ₂ | <input type="checkbox"/> ₃ | <input type="checkbox"/> ₄ | <input type="checkbox"/> ₅ |
| Drinking alcohol can be harmful to your health | <input type="checkbox"/> ₁ | <input type="checkbox"/> ₂ | <input type="checkbox"/> ₃ | <input type="checkbox"/> ₄ | <input type="checkbox"/> ₅ |
| Drinking alcohol makes you feel bad | <input type="checkbox"/> ₁ | <input type="checkbox"/> ₂ | <input type="checkbox"/> ₃ | <input type="checkbox"/> ₄ | <input type="checkbox"/> ₅ |

25. Do you think you will be drinking when you are twenty-five years old?

- ₁ Yes
₂ No
₃ I don't know

The next questions ask about drugs. We remind you that any information you choose to give us will be very strictly confidential to the researchers. It will not be possible to match your name or school to your answers.

26. On how many occasions (if any) have you sniffed an inhalant (e.g. glue, aerosol, etc.) to get high? **(Please tick one answer for each question)**

| When | Number of occasions | | | | | | |
|---------------------------|---------------------------------------|---------------------------------------|---------------------------------------|---------------------------------------|---------------------------------------|---------------------------------------|---------------------------------------|
| | 0 | 1-2 | 3-5 | 6-9 | 10-19 | 20-39 | 40 or more |
| In your lifetime | <input type="checkbox"/> ₁ | <input type="checkbox"/> ₂ | <input type="checkbox"/> ₃ | <input type="checkbox"/> ₄ | <input type="checkbox"/> ₅ | <input type="checkbox"/> ₆ | <input type="checkbox"/> ₇ |
| During the last 12 months | <input type="checkbox"/> ₁ | <input type="checkbox"/> ₂ | <input type="checkbox"/> ₃ | <input type="checkbox"/> ₄ | <input type="checkbox"/> ₅ | <input type="checkbox"/> ₆ | <input type="checkbox"/> ₇ |
| During the last 30 days | <input type="checkbox"/> ₁ | <input type="checkbox"/> ₂ | <input type="checkbox"/> ₃ | <input type="checkbox"/> ₄ | <input type="checkbox"/> ₅ | <input type="checkbox"/> ₆ | <input type="checkbox"/> ₇ |

I have never sniffed an inhalant to get high ₉

27. Have you ever heard of any of the following drugs? **(Please ✓ one answer for each drug)**

| Drug | Yes | No |
|--|---------------------------------------|---------------------------------------|
| Tranquillisers or sedatives | <input type="checkbox"/> ₁ | <input type="checkbox"/> ₂ |
| Marijuana, cannabis, hashish, pot, grass | <input type="checkbox"/> ₁ | <input type="checkbox"/> ₂ |
| LSD | <input type="checkbox"/> ₁ | <input type="checkbox"/> ₂ |
| Amphetamines | <input type="checkbox"/> ₁ | <input type="checkbox"/> ₂ |
| Crack | <input type="checkbox"/> ₁ | <input type="checkbox"/> ₂ |
| Cocaine | <input type="checkbox"/> ₁ | <input type="checkbox"/> ₂ |
| Relevin | <input type="checkbox"/> ₁ | <input type="checkbox"/> ₂ |
| Heroin | <input type="checkbox"/> ₁ | <input type="checkbox"/> ₂ |
| Ecstasy | <input type="checkbox"/> ₁ | <input type="checkbox"/> ₂ |
| Methadone | <input type="checkbox"/> ₁ | <input type="checkbox"/> ₂ |
| Magic mushrooms | <input type="checkbox"/> ₁ | <input type="checkbox"/> ₂ |

28. Have you ever wanted to try any of the drugs mentioned in **Question 27?**

₁ **Yes** ₂ **No**

29. What do you think you might do if you were offered a drug by someone you know?
(Please ✓ one box only)

- ₁ **Say “no” straight away**
- ₂ **Feel pressurised and accept**
- ₃ **Be happy to take the drug**
- ₄ **Report the person to the Gardaí**
- ₅ **Report the person to some other adult**
- ₆ **Other, please specify**

30. Have you ever been offered drugs?

₁ **Yes** ₂ **No**

31. Where have you been offered drugs? (Please ✓ all that apply to you)

- ₁ **Never been offered drugs**
 - ₂ **Night-club/disco**
 - ₃ **Pub**
 - ₄ **School**
 - ₅ **Your home**
 - ₆ **Friend's house**
 - ₇ **Concert**
 - ₈ **Street**
 - ₉ **Park, beach, other open area**
 - ₁₀ **Other place (please describe)**
-

32. Would you point out to a friend the dangers of taking drugs?

- ₁ **Yes** ₂ **No**

33. Would you tell an adult if your friends were taking drugs?

- ₁ **Yes** ₂ **No**

34. On how many occasions, if any, have you used any of the following drugs IN YOUR LIFETIME? (Please ✓ one answer for each drug listed)

| Substance | Number of occasions | | | | | | |
|--|---------------------------------------|---------------------------------------|---------------------------------------|---------------------------------------|---------------------------------------|---------------------------------------|---------------------------------------|
| | 0 | 1-2 | 3-5 | 6-9 | 10-19 | 20-39 | 40 or more |
| Tranquillisers or sedatives (other than on medical advice) | <input type="checkbox"/> ₁ | <input type="checkbox"/> ₂ | <input type="checkbox"/> ₃ | <input type="checkbox"/> ₄ | <input type="checkbox"/> ₅ | <input type="checkbox"/> ₆ | <input type="checkbox"/> ₇ |
| Marijuana, cannabis, hashish, pot, grass | <input type="checkbox"/> ₁ | <input type="checkbox"/> ₂ | <input type="checkbox"/> ₃ | <input type="checkbox"/> ₄ | <input type="checkbox"/> ₅ | <input type="checkbox"/> ₆ | <input type="checkbox"/> ₇ |
| LSD or some other hallucinogens | <input type="checkbox"/> ₁ | <input type="checkbox"/> ₂ | <input type="checkbox"/> ₃ | <input type="checkbox"/> ₄ | <input type="checkbox"/> ₅ | <input type="checkbox"/> ₆ | <input type="checkbox"/> ₇ |
| Crack | <input type="checkbox"/> ₁ | <input type="checkbox"/> ₂ | <input type="checkbox"/> ₃ | <input type="checkbox"/> ₄ | <input type="checkbox"/> ₅ | <input type="checkbox"/> ₆ | <input type="checkbox"/> ₇ |
| Cocaine | <input type="checkbox"/> ₁ | <input type="checkbox"/> ₂ | <input type="checkbox"/> ₃ | <input type="checkbox"/> ₄ | <input type="checkbox"/> ₅ | <input type="checkbox"/> ₆ | <input type="checkbox"/> ₇ |
| Relevin | <input type="checkbox"/> ₁ | <input type="checkbox"/> ₂ | <input type="checkbox"/> ₃ | <input type="checkbox"/> ₄ | <input type="checkbox"/> ₅ | <input type="checkbox"/> ₆ | <input type="checkbox"/> ₇ |
| Heroin by smoking | <input type="checkbox"/> ₁ | <input type="checkbox"/> ₂ | <input type="checkbox"/> ₃ | <input type="checkbox"/> ₄ | <input type="checkbox"/> ₅ | <input type="checkbox"/> ₆ | <input type="checkbox"/> ₇ |
| Heroin by injection | <input type="checkbox"/> ₁ | <input type="checkbox"/> ₂ | <input type="checkbox"/> ₃ | <input type="checkbox"/> ₄ | <input type="checkbox"/> ₅ | <input type="checkbox"/> ₆ | <input type="checkbox"/> ₇ |
| Ecstasy | <input type="checkbox"/> ₁ | <input type="checkbox"/> ₂ | <input type="checkbox"/> ₃ | <input type="checkbox"/> ₄ | <input type="checkbox"/> ₅ | <input type="checkbox"/> ₆ | <input type="checkbox"/> ₇ |
| Other drugs by injection | <input type="checkbox"/> ₁ | <input type="checkbox"/> ₂ | <input type="checkbox"/> ₃ | <input type="checkbox"/> ₄ | <input type="checkbox"/> ₅ | <input type="checkbox"/> ₆ | <input type="checkbox"/> ₇ |
| Amphetamine | <input type="checkbox"/> ₁ | <input type="checkbox"/> ₂ | <input type="checkbox"/> ₃ | <input type="checkbox"/> ₄ | <input type="checkbox"/> ₅ | <input type="checkbox"/> ₆ | <input type="checkbox"/> ₇ |
| Alcohol together with other drug(s) | <input type="checkbox"/> ₁ | <input type="checkbox"/> ₂ | <input type="checkbox"/> ₃ | <input type="checkbox"/> ₄ | <input type="checkbox"/> ₅ | <input type="checkbox"/> ₆ | <input type="checkbox"/> ₇ |
| Anabolic steroids | <input type="checkbox"/> ₁ | <input type="checkbox"/> ₂ | <input type="checkbox"/> ₃ | <input type="checkbox"/> ₄ | <input type="checkbox"/> ₅ | <input type="checkbox"/> ₆ | <input type="checkbox"/> ₇ |

35. When did you last take a drug? (Please tick one answer only)

- ₁ Never took drugs
- ₂ Not within the last year
- ₃ Within the last few days
- ₄ Within the last two weeks
- ₅ Within the last month
- ₆ Within the last three months
- ₇ Within the last six months
- ₈ Within the last nine months
- ₉ Within the last year

36. Have you ever used more than one drug on the same occasion in the past year? **(Please tick one answer)**

| Never | Once or twice | Frequently | Always |
|---------------------------------------|---------------------------------------|---------------------------------------|---------------------------------------|
| <input type="checkbox"/> ₁ | <input type="checkbox"/> ₂ | <input type="checkbox"/> ₃ | <input type="checkbox"/> ₄ |

37. From whom did you obtain your drugs LAST TIME? **(Please ✓ one answer only)**

- ₁ Never took drugs
- ₂ A friend
- ₃ Brother/sister
- ₄ Dealer/supplier
- ₅ Other (please specify)

38. Where did you take the drugs last time? **(Please tick one answer only)**

- ₁ Never took drugs
- ₂ Your own house
- ₃ Friend's house
- ₄ Club/Disco
- ₅ Pub
- ₆ Concert
- ₇ Street
- ₈ Park, beach, other public area
- ₉ Other place (please specify)

39. When, if ever, did you FIRST do each of the following things? **(Please tick one box in each line)**

| Activity | Never | Age 11 or less | Age if over 11 years (Please specify age or approximate age) |
|---------------------------------|---------------------------------------|---------------------------------------|--|
| Drink beer (at least one glass) | <input type="checkbox"/> ₁ | <input type="checkbox"/> ₂ | _____ |

| | | | |
|---|---------------------------------------|---------------------------------------|-------|
| Drink wine (at least one glass) | <input type="checkbox"/> ₁ | <input type="checkbox"/> ₂ | _____ |
| Drink spirits (at least one glass) | <input type="checkbox"/> ₁ | <input type="checkbox"/> ₂ | _____ |
| Get drunk on alcohol | <input type="checkbox"/> ₁ | <input type="checkbox"/> ₂ | _____ |
| Smoke your first cigarette | <input type="checkbox"/> ₁ | <input type="checkbox"/> ₂ | _____ |
| Smoke cigarettes on a daily basis | <input type="checkbox"/> ₁ | <input type="checkbox"/> ₂ | _____ |
| Use amphetamines | <input type="checkbox"/> ₁ | <input type="checkbox"/> ₂ | _____ |
| Use tranquillisers or sedatives | <input type="checkbox"/> ₁ | <input type="checkbox"/> ₂ | _____ |
| Use marijuana, cannabis, hashish, pot, grass | <input type="checkbox"/> ₁ | <input type="checkbox"/> ₂ | _____ |
| Use LSD or some other hallucinogen | <input type="checkbox"/> ₁ | <input type="checkbox"/> ₂ | _____ |
| Use crack | <input type="checkbox"/> ₁ | <input type="checkbox"/> ₂ | _____ |
| Use relexin | <input type="checkbox"/> ₁ | <input type="checkbox"/> ₂ | _____ |
| Use ecstasy | <input type="checkbox"/> ₁ | <input type="checkbox"/> ₂ | _____ |
| Use heroin | <input type="checkbox"/> ₁ | <input type="checkbox"/> ₂ | _____ |
| Use inhalants/glue etc. | <input type="checkbox"/> ₁ | <input type="checkbox"/> ₂ | _____ |
| Use cocaine | <input type="checkbox"/> ₁ | <input type="checkbox"/> ₂ | _____ |
| Use magic mushrooms | <input type="checkbox"/> ₁ | <input type="checkbox"/> ₂ | _____ |
| Use alcohol with marijuana, cannabis, hashish, pot, grass | <input type="checkbox"/> ₁ | <input type="checkbox"/> ₂ | _____ |
| Use alcohol with other drugs | <input type="checkbox"/> ₁ | <input type="checkbox"/> ₂ | _____ |
| Use anabolic steroids | <input type="checkbox"/> ₁ | <input type="checkbox"/> ₂ | _____ |

40. How much do the following drugs cost? (Please indicate cost or tick don't know)

| Drug | Unit | £ | Don't know |
|----------|---------|---|------------|
| Cannabis | oz/deal | | |
| Cocaine | Gram | | |

| | | | |
|-----------------|---------|--|--|
| Tranquillisers | Tablet | | |
| LSD | Tab | | |
| Magic Mushrooms | Bag | | |
| Relevin | Tablets | | |
| Barbiturates | Tablets | | |
| Heroin | Gram | | |
| Amphetamines | Gram | | |
| Ecstasy | Tablet | | |

41. What was the FIRST DRUG (if any) that you ever tried? (**Please tick only one box to answer**)

- ₁ I have never tried any of the substances listed below
- ₂ Tranquillisers or sedatives without a doctor's prescription
- ₃ Marijuana, cannabis, hashish, pot, grass
- ₄ LSD
- ₅ Amphetamines
- ₆ Crack
- ₇ Cocaine
- ₈ Relevin
- ₉ Heroin
- ₁₀ Ecstasy
- ₁₁ Magic mushrooms
- ₁₂ I don't know what it was

42. How did you get this drug? (**Please tick only one box to answer**)

- ₁ I have never used any of the substances listed
- ₂ Given to me by an older brother or sister
- ₃ Given to me by a friend, a boy or girl older than me
- ₄ Given to me by a friend my own age or younger
- ₅ Given to me by someone I had heard about but did not

- know personally
- ₆ Given to me by a stranger
 - ₇ It was shared around a group of friends
 - ₈ Bought from a friend
 - ₉ Bought from someone I had heard about but did not know personally
 - ₁₀ Bought from a stranger
 - ₁₁ Given to me by one of my parents
 - ₁₂ Got it at home with my parents' permission
 - ₁₃ None of the these (please describe briefly how you did get it)
-

43. What was the reason for you using drugs? **(Please tick all that apply)**

- ₁ I have never used any of the substances listed
- ₂ I wanted to feel high
- ₃ I wanted to be the same as the others in the group
- ₄ I had nothing to do
- ₅ I was curious
- ₆ I wanted to forget my problems
- ₇ Other reason(s) please specify
- ₈ I don't remember

44. In which of the following places do you think you could easily buy cannabis, marijuana, hashish, pot, or grass if you wanted to? **(Please tick all that apply)**

- ₁ I don't know of any such place
- ₂ street, park, other open area.
- ₃ school
- ₄ disco, bar, etc.

- ₅ house of a dealer
- ₆ other place(s), please specify

45. Individuals differ in whether or not they disapprove of people doing certain things. DO YOU DISAPPROVE of people doing each of the following? **(Please tick one box in each line)**

| Activity | Don't disapprove | Disapprove | Strongly disapprove | Don't know |
|--|---------------------------------------|---------------------------------------|---------------------------------------|---------------------------------------|
| Smoking cigarettes occasionally | <input type="checkbox"/> ₁ | <input type="checkbox"/> ₂ | <input type="checkbox"/> ₃ | <input type="checkbox"/> ₄ |
| Smoking 10 or more cigarettes a day | <input type="checkbox"/> ₁ | <input type="checkbox"/> ₂ | <input type="checkbox"/> ₃ | <input type="checkbox"/> ₄ |
| Drinking one or two alcoholic drinks a few times a year | <input type="checkbox"/> ₁ | <input type="checkbox"/> ₂ | <input type="checkbox"/> ₃ | <input type="checkbox"/> ₄ |
| Having one or two drinks several times a week | <input type="checkbox"/> ₁ | <input type="checkbox"/> ₂ | <input type="checkbox"/> ₃ | <input type="checkbox"/> ₄ |
| Getting drunk once a week | <input type="checkbox"/> ₁ | <input type="checkbox"/> ₂ | <input type="checkbox"/> ₃ | <input type="checkbox"/> ₄ |
| Trying cannabis (marijuana, hashish, pot, grass) once or twice | <input type="checkbox"/> ₁ | <input type="checkbox"/> ₂ | <input type="checkbox"/> ₃ | <input type="checkbox"/> ₄ |
| Smoking cannabis occasionally | <input type="checkbox"/> ₁ | <input type="checkbox"/> ₂ | <input type="checkbox"/> ₃ | <input type="checkbox"/> ₄ |
| Smoking cannabis regularly | <input type="checkbox"/> ₁ | <input type="checkbox"/> ₂ | <input type="checkbox"/> ₃ | <input type="checkbox"/> ₄ |
| Trying LSD/hallucinogen once Or twice | <input type="checkbox"/> ₁ | <input type="checkbox"/> ₂ | <input type="checkbox"/> ₃ | <input type="checkbox"/> ₄ |
| Taking LSD/hallucinogen more often | <input type="checkbox"/> ₁ | <input type="checkbox"/> ₂ | <input type="checkbox"/> ₃ | <input type="checkbox"/> ₄ |
| Trying crack/cocaine once or twice | <input type="checkbox"/> ₁ | <input type="checkbox"/> ₂ | <input type="checkbox"/> ₃ | <input type="checkbox"/> ₄ |
| Trying crack/cocaine more often | <input type="checkbox"/> ₁ | <input type="checkbox"/> ₂ | <input type="checkbox"/> ₃ | <input type="checkbox"/> ₄ |
| Trying ecstasy once or twice | <input type="checkbox"/> ₁ | <input type="checkbox"/> ₂ | <input type="checkbox"/> ₃ | <input type="checkbox"/> ₄ |
| Taking ecstasy more often | <input type="checkbox"/> ₁ | <input type="checkbox"/> ₂ | <input type="checkbox"/> ₃ | <input type="checkbox"/> ₄ |
| Trying inhalants (glue etc.) once or twice | <input type="checkbox"/> ₁ | <input type="checkbox"/> ₂ | <input type="checkbox"/> ₃ | <input type="checkbox"/> ₄ |
| Smoking heroin | <input type="checkbox"/> ₁ | <input type="checkbox"/> ₂ | <input type="checkbox"/> ₃ | <input type="checkbox"/> ₄ |
| Injecting heroin | <input type="checkbox"/> ₁ | <input type="checkbox"/> ₂ | <input type="checkbox"/> ₃ | <input type="checkbox"/> ₄ |

46. How much do you think people risk harming themselves (physically or in other ways), if they do any of the following **(Please tick one box in each line)**

| Activity | No risk | Slight risk | Moderate risk | Great risk | Don't know |
|-------------------------------------|---------------------------------------|---------------------------------------|---------------------------------------|---------------------------------------|---------------------------------------|
| Smoke cigarettes occasionally | <input type="checkbox"/> ₁ | <input type="checkbox"/> ₂ | <input type="checkbox"/> ₃ | <input type="checkbox"/> ₄ | <input type="checkbox"/> ₅ |
| Smoke 20 or more cigarettes per day | <input type="checkbox"/> ₁ | <input type="checkbox"/> ₂ | <input type="checkbox"/> ₃ | <input type="checkbox"/> ₄ | <input type="checkbox"/> ₅ |
| Take one or two drinks nearly | <input type="checkbox"/> ₁ | <input type="checkbox"/> ₂ | <input type="checkbox"/> ₃ | <input type="checkbox"/> ₄ | <input type="checkbox"/> ₅ |

| | | | | | |
|---|---------------------------------------|---------------------------------------|---------------------------------------|---------------------------------------|---------------------------------------|
| every day | | | | | |
| Take four or five drinks nearly every day | <input type="checkbox"/> ₁ | <input type="checkbox"/> ₂ | <input type="checkbox"/> ₃ | <input type="checkbox"/> ₄ | <input type="checkbox"/> ₅ |
| Have five or more drinks once or twice each weekend | <input type="checkbox"/> ₁ | <input type="checkbox"/> ₂ | <input type="checkbox"/> ₃ | <input type="checkbox"/> ₄ | <input type="checkbox"/> ₅ |
| Try cannabis once or twice | <input type="checkbox"/> ₁ | <input type="checkbox"/> ₂ | <input type="checkbox"/> ₃ | <input type="checkbox"/> ₄ | <input type="checkbox"/> ₅ |
| Smoke cannabis occasionally | <input type="checkbox"/> ₁ | <input type="checkbox"/> ₂ | <input type="checkbox"/> ₃ | <input type="checkbox"/> ₄ | <input type="checkbox"/> ₅ |
| Smoke cannabis regularly | <input type="checkbox"/> ₁ | <input type="checkbox"/> ₂ | <input type="checkbox"/> ₃ | <input type="checkbox"/> ₄ | <input type="checkbox"/> ₅ |
| Try LSD once or twice | <input type="checkbox"/> ₁ | <input type="checkbox"/> ₂ | <input type="checkbox"/> ₃ | <input type="checkbox"/> ₄ | <input type="checkbox"/> ₅ |
| Take LSD regularly | <input type="checkbox"/> ₁ | <input type="checkbox"/> ₂ | <input type="checkbox"/> ₃ | <input type="checkbox"/> ₄ | <input type="checkbox"/> ₅ |
| Try an amphetamine once or twice | <input type="checkbox"/> ₁ | <input type="checkbox"/> ₂ | <input type="checkbox"/> ₃ | <input type="checkbox"/> ₄ | <input type="checkbox"/> ₅ |
| Take amphetamines regularly | <input type="checkbox"/> ₁ | <input type="checkbox"/> ₂ | <input type="checkbox"/> ₃ | <input type="checkbox"/> ₄ | <input type="checkbox"/> ₅ |
| Try cocaine or crack once or twice | <input type="checkbox"/> ₁ | <input type="checkbox"/> ₂ | <input type="checkbox"/> ₃ | <input type="checkbox"/> ₄ | <input type="checkbox"/> ₅ |
| Take cocaine or crack regularly | <input type="checkbox"/> ₁ | <input type="checkbox"/> ₂ | <input type="checkbox"/> ₃ | <input type="checkbox"/> ₄ | <input type="checkbox"/> ₅ |
| Try ecstasy once or twice | <input type="checkbox"/> ₁ | <input type="checkbox"/> ₂ | <input type="checkbox"/> ₃ | <input type="checkbox"/> ₄ | <input type="checkbox"/> ₅ |
| Take ecstasy regularly | <input type="checkbox"/> ₁ | <input type="checkbox"/> ₂ | <input type="checkbox"/> ₃ | <input type="checkbox"/> ₄ | <input type="checkbox"/> ₅ |
| Try inhalants (glue, etc.) once or twice | <input type="checkbox"/> ₁ | <input type="checkbox"/> ₂ | <input type="checkbox"/> ₃ | <input type="checkbox"/> ₄ | <input type="checkbox"/> ₅ |
| Use inhalants (glue, etc.) regularly | <input type="checkbox"/> ₁ | <input type="checkbox"/> ₂ | <input type="checkbox"/> ₃ | <input type="checkbox"/> ₄ | <input type="checkbox"/> ₅ |
| Smoke heroin | <input type="checkbox"/> ₁ | <input type="checkbox"/> ₂ | <input type="checkbox"/> ₃ | <input type="checkbox"/> ₄ | <input type="checkbox"/> ₅ |
| Inject heroin | <input type="checkbox"/> ₁ | <input type="checkbox"/> ₂ | <input type="checkbox"/> ₃ | <input type="checkbox"/> ₄ | <input type="checkbox"/> ₅ |

47. How difficult do you think it would be for you to get each of the following, if you wanted? **(Please tick one box in each line)**

| Item | Not possible | Very difficult | Fairly difficult | Fairly easy | Very easy | Don't know |
|------------|---------------------------------------|---------------------------------------|---------------------------------------|---------------------------------------|---------------------------------------|---------------------------------------|
| Cigarettes | <input type="checkbox"/> ₁ | <input type="checkbox"/> ₂ | <input type="checkbox"/> ₃ | <input type="checkbox"/> ₄ | <input type="checkbox"/> ₅ | <input type="checkbox"/> ₆ |
| Beer | <input type="checkbox"/> ₁ | <input type="checkbox"/> ₂ | <input type="checkbox"/> ₃ | <input type="checkbox"/> ₄ | <input type="checkbox"/> ₅ | <input type="checkbox"/> ₆ |
| Wine | <input type="checkbox"/> ₁ | <input type="checkbox"/> ₂ | <input type="checkbox"/> ₃ | <input type="checkbox"/> ₄ | <input type="checkbox"/> ₅ | <input type="checkbox"/> ₆ |
| Spirits | <input type="checkbox"/> ₁ | <input type="checkbox"/> ₂ | <input type="checkbox"/> ₃ | <input type="checkbox"/> ₄ | <input type="checkbox"/> ₅ | <input type="checkbox"/> ₆ |
| Cannabis, | <input type="checkbox"/> ₁ | <input type="checkbox"/> ₂ | <input type="checkbox"/> ₃ | <input type="checkbox"/> ₄ | <input type="checkbox"/> ₅ | <input type="checkbox"/> ₆ |

| | | | | | | |
|--------------------------|---------------------------------------|---------------------------------------|---------------------------------------|---------------------------------------|---------------------------------------|---------------------------------------|
| LSD/hallucinogen | <input type="checkbox"/> ₁ | <input type="checkbox"/> ₂ | <input type="checkbox"/> ₃ | <input type="checkbox"/> ₄ | <input type="checkbox"/> ₅ | <input type="checkbox"/> ₆ |
| Amphetamines, speed | <input type="checkbox"/> ₁ | <input type="checkbox"/> ₂ | <input type="checkbox"/> ₃ | <input type="checkbox"/> ₄ | <input type="checkbox"/> ₅ | <input type="checkbox"/> ₆ |
| Tranquillisers/sedatives | <input type="checkbox"/> ₁ | <input type="checkbox"/> ₂ | <input type="checkbox"/> ₃ | <input type="checkbox"/> ₄ | <input type="checkbox"/> ₅ | <input type="checkbox"/> ₆ |
| Crack | <input type="checkbox"/> ₁ | <input type="checkbox"/> ₂ | <input type="checkbox"/> ₃ | <input type="checkbox"/> ₄ | <input type="checkbox"/> ₅ | <input type="checkbox"/> ₆ |
| Cocaine | <input type="checkbox"/> ₁ | <input type="checkbox"/> ₂ | <input type="checkbox"/> ₃ | <input type="checkbox"/> ₄ | <input type="checkbox"/> ₅ | <input type="checkbox"/> ₆ |
| Ecstasy | <input type="checkbox"/> ₁ | <input type="checkbox"/> ₂ | <input type="checkbox"/> ₃ | <input type="checkbox"/> ₄ | <input type="checkbox"/> ₅ | <input type="checkbox"/> ₆ |
| Heroin | <input type="checkbox"/> ₁ | <input type="checkbox"/> ₂ | <input type="checkbox"/> ₃ | <input type="checkbox"/> ₄ | <input type="checkbox"/> ₅ | <input type="checkbox"/> ₆ |
| Anabolic steroids | <input type="checkbox"/> ₁ | <input type="checkbox"/> ₂ | <input type="checkbox"/> ₃ | <input type="checkbox"/> ₄ | <input type="checkbox"/> ₅ | <input type="checkbox"/> ₆ |
| Magic mushrooms | <input type="checkbox"/> ₁ | <input type="checkbox"/> ₂ | <input type="checkbox"/> ₃ | <input type="checkbox"/> ₄ | <input type="checkbox"/> ₅ | <input type="checkbox"/> ₆ |

48. How many of your friends do you think do the following? **(Please tick one box in each line)**

| Activity | None | A few | Some | Most | All |
|---|---------------------------------------|---------------------------------------|---------------------------------------|---------------------------------------|---------------------------------------|
| Smoke cigarettes | <input type="checkbox"/> ₁ | <input type="checkbox"/> ₂ | <input type="checkbox"/> ₃ | <input type="checkbox"/> ₄ | <input type="checkbox"/> ₅ |
| Drink alcoholic beverages | <input type="checkbox"/> ₁ | <input type="checkbox"/> ₂ | <input type="checkbox"/> ₃ | <input type="checkbox"/> ₄ | <input type="checkbox"/> ₅ |
| Get drunk | <input type="checkbox"/> ₁ | <input type="checkbox"/> ₂ | <input type="checkbox"/> ₃ | <input type="checkbox"/> ₄ | <input type="checkbox"/> ₅ |
| Smoke cannabis | <input type="checkbox"/> ₁ | <input type="checkbox"/> ₂ | <input type="checkbox"/> ₃ | <input type="checkbox"/> ₄ | <input type="checkbox"/> ₅ |
| Take LSD or some other hallucinogen | <input type="checkbox"/> ₁ | <input type="checkbox"/> ₂ | <input type="checkbox"/> ₃ | <input type="checkbox"/> ₄ | <input type="checkbox"/> ₅ |
| Take amphetamines | <input type="checkbox"/> ₁ | <input type="checkbox"/> ₂ | <input type="checkbox"/> ₃ | <input type="checkbox"/> ₄ | <input type="checkbox"/> ₅ |
| Take tranquillisers or sedatives (without prescription) | <input type="checkbox"/> ₁ | <input type="checkbox"/> ₂ | <input type="checkbox"/> ₃ | <input type="checkbox"/> ₄ | <input type="checkbox"/> ₅ |
| Take cocaine or crack | <input type="checkbox"/> ₁ | <input type="checkbox"/> ₂ | <input type="checkbox"/> ₃ | <input type="checkbox"/> ₄ | <input type="checkbox"/> ₅ |
| Take heroin | <input type="checkbox"/> ₁ | <input type="checkbox"/> ₂ | <input type="checkbox"/> ₃ | <input type="checkbox"/> ₄ | <input type="checkbox"/> ₅ |
| Take inhalants | <input type="checkbox"/> ₁ | <input type="checkbox"/> ₂ | <input type="checkbox"/> ₃ | <input type="checkbox"/> ₄ | <input type="checkbox"/> ₅ |
| Take magic mushrooms | <input type="checkbox"/> ₁ | <input type="checkbox"/> ₂ | <input type="checkbox"/> ₃ | <input type="checkbox"/> ₄ | <input type="checkbox"/> ₅ |
| Take alcohol together with pills | <input type="checkbox"/> ₁ | <input type="checkbox"/> ₂ | <input type="checkbox"/> ₃ | <input type="checkbox"/> ₄ | <input type="checkbox"/> ₅ |
| Take anabolic steroids | <input type="checkbox"/> ₁ | <input type="checkbox"/> ₂ | <input type="checkbox"/> ₃ | <input type="checkbox"/> ₄ | <input type="checkbox"/> ₅ |

49. Have you ever had any of the following problems because of alcohol or drug use? **(Please tick one box in each line)**

| Situation | Never | Yes, because of alcohol use by me | Yes, because of drug use by me |
|---------------------|---------------------------------------|---------------------------------------|---------------------------------------|
| Quarrel or argument | <input type="checkbox"/> ₁ | <input type="checkbox"/> ₂ | <input type="checkbox"/> ₃ |
| Scuffle or fight | <input type="checkbox"/> ₁ | <input type="checkbox"/> ₂ | <input type="checkbox"/> ₃ |
| Accident or injury | <input type="checkbox"/> ₁ | <input type="checkbox"/> ₂ | <input type="checkbox"/> ₃ |

| | | | |
|--|---------------------------------------|---------------------------------------|---------------------------------------|
| Loss of money or other valuable items | <input type="checkbox"/> ₁ | <input type="checkbox"/> ₂ | <input type="checkbox"/> ₃ |
| Damage to objects or clothing | <input type="checkbox"/> ₁ | <input type="checkbox"/> ₂ | <input type="checkbox"/> ₃ |
| Problems in your relationship with your parents | <input type="checkbox"/> ₁ | <input type="checkbox"/> ₂ | <input type="checkbox"/> ₃ |
| Problems in your relationship with your friends | <input type="checkbox"/> ₁ | <input type="checkbox"/> ₂ | <input type="checkbox"/> ₃ |
| Problems in your relationship with your teachers | <input type="checkbox"/> ₁ | <input type="checkbox"/> ₂ | <input type="checkbox"/> ₃ |
| Performed poorly at school or work | <input type="checkbox"/> ₁ | <input type="checkbox"/> ₂ | <input type="checkbox"/> ₃ |
| Been victimised by robbery or theft | <input type="checkbox"/> ₁ | <input type="checkbox"/> ₂ | <input type="checkbox"/> ₃ |
| Trouble with police | <input type="checkbox"/> ₁ | <input type="checkbox"/> ₂ | <input type="checkbox"/> ₃ |
| Hospitalised or admitted to an emergency room | <input type="checkbox"/> ₁ | <input type="checkbox"/> ₂ | <input type="checkbox"/> ₃ |

50. Do any of your older siblings (brothers or sisters) do any of the following? **(Please tick one box in each line)**

| Activity | Never | Seldom | Some times | Often | Don't know | Don't have any older siblings |
|---|---------------------------------------|---------------------------------------|---------------------------------------|---------------------------------------|---------------------------------------|---------------------------------------|
| Smoke cigarettes | <input type="checkbox"/> ₁ | <input type="checkbox"/> ₂ | <input type="checkbox"/> ₃ | <input type="checkbox"/> ₄ | <input type="checkbox"/> ₅ | <input type="checkbox"/> ₆ |
| Drink alcoholic beverages | <input type="checkbox"/> ₁ | <input type="checkbox"/> ₂ | <input type="checkbox"/> ₃ | <input type="checkbox"/> ₄ | <input type="checkbox"/> ₅ | <input type="checkbox"/> ₆ |
| Get drunk | <input type="checkbox"/> ₁ | <input type="checkbox"/> ₂ | <input type="checkbox"/> ₃ | <input type="checkbox"/> ₄ | <input type="checkbox"/> ₅ | <input type="checkbox"/> ₆ |
| Smoke cannabis | <input type="checkbox"/> ₁ | <input type="checkbox"/> ₂ | <input type="checkbox"/> ₃ | <input type="checkbox"/> ₄ | <input type="checkbox"/> ₅ | <input type="checkbox"/> ₆ |
| Take tranquillisers or sedatives (without prescription) | <input type="checkbox"/> ₁ | <input type="checkbox"/> ₂ | <input type="checkbox"/> ₃ | <input type="checkbox"/> ₄ | <input type="checkbox"/> ₅ | <input type="checkbox"/> ₆ |
| Take ecstasy | <input type="checkbox"/> ₁ | <input type="checkbox"/> ₂ | <input type="checkbox"/> ₃ | <input type="checkbox"/> ₄ | <input type="checkbox"/> ₅ | <input type="checkbox"/> ₆ |

51. Please read each statement and decide on the extent to which you agree or disagree with the statement. **(Please tick one answer for each statement)**

| Statement | Strongly agree | Agree | Neither agree nor disagree | Disagree | Strongly disagree |
|--|---------------------------------------|---------------------------------------|---------------------------------------|---------------------------------------|---------------------------------------|
| Cannabis should be legalised | <input type="checkbox"/> ₁ | <input type="checkbox"/> ₂ | <input type="checkbox"/> ₃ | <input type="checkbox"/> ₄ | <input type="checkbox"/> ₅ |
| People start taking illegal drugs just to keep up with their friends | <input type="checkbox"/> ₁ | <input type="checkbox"/> ₂ | <input type="checkbox"/> ₃ | <input type="checkbox"/> ₄ | <input type="checkbox"/> ₅ |
| People who have drug problems need help not | <input type="checkbox"/> ₁ | <input type="checkbox"/> ₂ | <input type="checkbox"/> ₃ | <input type="checkbox"/> ₄ | <input type="checkbox"/> ₅ |

| | | | | | |
|---|---------------------------------------|---------------------------------------|---------------------------------------|---------------------------------------|---------------------------------------|
| punishment | | | | | |
| Ecstasy should be legalised | <input type="checkbox"/> ₁ | <input type="checkbox"/> ₂ | <input type="checkbox"/> ₃ | <input type="checkbox"/> ₄ | <input type="checkbox"/> ₅ |
| Drinking in pubs should be legal at 17 | <input type="checkbox"/> ₁ | <input type="checkbox"/> ₂ | <input type="checkbox"/> ₃ | <input type="checkbox"/> ₄ | <input type="checkbox"/> ₅ |
| Knowing that drugs are illegal is half the fun | <input type="checkbox"/> ₁ | <input type="checkbox"/> ₂ | <input type="checkbox"/> ₃ | <input type="checkbox"/> ₄ | <input type="checkbox"/> ₅ |
| I would tend to avoid someone who is an addict | <input type="checkbox"/> ₁ | <input type="checkbox"/> ₂ | <input type="checkbox"/> ₃ | <input type="checkbox"/> ₄ | <input type="checkbox"/> ₅ |
| A lot of young people take illegal drugs nowadays | <input type="checkbox"/> ₁ | <input type="checkbox"/> ₂ | <input type="checkbox"/> ₃ | <input type="checkbox"/> ₄ | <input type="checkbox"/> ₅ |
| Drugs make you look old before your time | <input type="checkbox"/> ₁ | <input type="checkbox"/> ₂ | <input type="checkbox"/> ₃ | <input type="checkbox"/> ₄ | <input type="checkbox"/> ₅ |
| Drugs make you feel bad | <input type="checkbox"/> ₁ | <input type="checkbox"/> ₂ | <input type="checkbox"/> ₃ | <input type="checkbox"/> ₄ | <input type="checkbox"/> ₅ |
| I will never take illegal drugs | <input type="checkbox"/> ₁ | <input type="checkbox"/> ₂ | <input type="checkbox"/> ₃ | <input type="checkbox"/> ₄ | <input type="checkbox"/> ₅ |
| I would be afraid of someone who uses drugs | <input type="checkbox"/> ₁ | <input type="checkbox"/> ₂ | <input type="checkbox"/> ₃ | <input type="checkbox"/> ₄ | <input type="checkbox"/> ₅ |
| Cannabis, (marijuana, hashish, pot, grass) is not dangerous | <input type="checkbox"/> ₁ | <input type="checkbox"/> ₂ | <input type="checkbox"/> ₃ | <input type="checkbox"/> ₄ | <input type="checkbox"/> ₅ |
| Ecstasy is not dangerous | <input type="checkbox"/> ₁ | <input type="checkbox"/> ₂ | <input type="checkbox"/> ₃ | <input type="checkbox"/> ₄ | <input type="checkbox"/> ₅ |

52. Do you think your school provides you with enough information about illegal drugs and alcohol? **(Please tick one box for drugs and one for alcohol)**

| Item | Enough information given | A little more information needed | A lot more information needed | No information given | Don't Know |
|----------------|---------------------------------------|---------------------------------------|---------------------------------------|---------------------------------------|---------------------------------------|
| Drugs | <input type="checkbox"/> ₁ | <input type="checkbox"/> ₂ | <input type="checkbox"/> ₃ | <input type="checkbox"/> ₄ | <input type="checkbox"/> ₅ |
| Alcohol | <input type="checkbox"/> ₁ | <input type="checkbox"/> ₂ | <input type="checkbox"/> ₃ | <input type="checkbox"/> ₄ | <input type="checkbox"/> ₅ |

53. Have you been given information/talks on drugs and alcohol outside of school? **(Please tick yes or no for each)**

| Item | Yes | No |
|----------------|---------------------------------------|---------------------------------------|
| Drugs | <input type="checkbox"/> ₁ | <input type="checkbox"/> ₂ |
| Alcohol | <input type="checkbox"/> ₁ | <input type="checkbox"/> ₂ |

If "yes", please specify from whom _____

The following questions are more general. They are required for background information and will help us understand the results of this survey.

54. Which of the following describes your school situation? (Please tick **one** box only)

- ₁ A full boarder in a boarding school
- ₂ A day pupil in a boarding school
- ₃ In a school that does not do boarding
- ₄ Other – please describe

55. Where do you live? (Please tick **one** box only)

- ₁ Dublin
- ₂ Other city (Please name): _____
- ₃ Large town (10,000+ population)
- ₄ Small town (1000-10,000 population)
- ₅ Village
- ₆ Rural

56. Do you have a part-time job?

- ₁ Yes ₂ No

57. How much money would you usually earn a week, including pocket money?
(Please tick **one** answer only)

- ₁ Under £10
- ₂ £11 - £20
- ₃ £21 - £30

- ₄ £31 - £50
- ₅ £51 - £75
- ₆ £76 - £100
- ₇ More than £100
- ₈ Not applicable

58. Which of the following people live in the same household with you? (Please tick all that apply)

- ₁ I live in residential care
- ₂ Father
- ₃ Stepfather/foster father
- ₄ Mother
- ₅ Stepmother/foster-mother
- ₆ Brother(s) and/or sister(s)
- ₇ Grandparent(s)
- ₈ Other relative(s)
- ₉ Other non-relative(s)

59. How satisfied are you that you could discuss issues relating to alcohol and drugs, with the following people? (Please tick one box for each person)

| Person | Very satisfied | Satisfied | Neither satisfied nor dissatisfied | Not so satisfied | Not at all satisfied | Not applicable |
|---------------|----------------------------|----------------------------|------------------------------------|----------------------------|----------------------------|----------------------------|
| Your mother? | <input type="checkbox"/> ₁ | <input type="checkbox"/> ₂ | <input type="checkbox"/> ₃ | <input type="checkbox"/> ₄ | <input type="checkbox"/> ₅ | <input type="checkbox"/> ₆ |
| Your father? | <input type="checkbox"/> ₁ | <input type="checkbox"/> ₂ | <input type="checkbox"/> ₃ | <input type="checkbox"/> ₄ | <input type="checkbox"/> ₅ | <input type="checkbox"/> ₆ |
| Your friends? | <input type="checkbox"/> ₁ | <input type="checkbox"/> ₂ | <input type="checkbox"/> ₃ | <input type="checkbox"/> ₄ | <input type="checkbox"/> ₅ | <input type="checkbox"/> ₆ |

60. Do your parents/guardians know where you spend Saturday evenings?
(Please tick one box)

- ₁ They always know
- ₂ They quite often know
- ₃ They sometimes know
- ₄ Usually they don't know
- ₅ Never know

61. How well off is your family compared to the families of other children in your school? (Please tick one box only)

- ₁ Much better off
- ₂ Better off
- ₃ About the same
- ₄ Less well off
- ₅ Much less well off

62. If you had ever used cannabis (marijuana, hashish, pot or grass) do you think that you would have said so in this questionnaire? (Please tick one box only)

- ₁ I have already said that I have used it
- ₂ Definitely yes
- ₃ Probably yes
- ₄ Probably not
- ₅ Definitely not

63. If you had ever used heroin, do you think that you would have said so in this questionnaire? (Please tick one box to answer)

- ₁ I have already said that I have used it
- ₂ Definitely yes
- ₃ Probably yes
- ₄ Probably not
- ₅ Definitely not

The following questions concern behaviours which may be anti-social. We hope that you will answer all the questions. Nevertheless, if you come across a question which you cannot answer honestly, we prefer that you leave it unanswered.

Remember that your answers will not be shown to anybody else.

64. During the LAST 12 MONTHS, how often have you done any of the following?
(Please tick one box for **each** line)

| Activity | Never | Once | Twice | 3-4 times | 5 or more times |
|---|---------------------------------------|---------------------------------------|---------------------------------------|---------------------------------------|---------------------------------------|
| Participated in a group bullying an individual | <input type="checkbox"/> ₁ | <input type="checkbox"/> ₂ | <input type="checkbox"/> ₃ | <input type="checkbox"/> ₄ | <input type="checkbox"/> ₅ |
| Participated in a group physically hurting an individual | <input type="checkbox"/> ₁ | <input type="checkbox"/> ₂ | <input type="checkbox"/> ₃ | <input type="checkbox"/> ₄ | <input type="checkbox"/> ₅ |
| Participated in a group starting a fight with another group | <input type="checkbox"/> ₁ | <input type="checkbox"/> ₂ | <input type="checkbox"/> ₃ | <input type="checkbox"/> ₄ | <input type="checkbox"/> ₅ |
| Started a fight with another individual | <input type="checkbox"/> ₁ | <input type="checkbox"/> ₂ | <input type="checkbox"/> ₃ | <input type="checkbox"/> ₄ | <input type="checkbox"/> ₅ |
| Stolen something worth £10 or more | <input type="checkbox"/> ₁ | <input type="checkbox"/> ₂ | <input type="checkbox"/> ₃ | <input type="checkbox"/> ₄ | <input type="checkbox"/> ₅ |
| Broken into a place to steal | <input type="checkbox"/> ₁ | <input type="checkbox"/> ₂ | <input type="checkbox"/> ₃ | <input type="checkbox"/> ₄ | <input type="checkbox"/> ₅ |
| Damaged public or private property on purpose | <input type="checkbox"/> ₁ | <input type="checkbox"/> ₂ | <input type="checkbox"/> ₃ | <input type="checkbox"/> ₄ | <input type="checkbox"/> ₅ |
| Sold stolen goods | <input type="checkbox"/> ₁ | <input type="checkbox"/> ₂ | <input type="checkbox"/> ₃ | <input type="checkbox"/> ₄ | <input type="checkbox"/> ₅ |

65. During the LAST 12 MONTHS, how often have you been involved in the following? (Please tick one box for **each** line.)

| Incident | Never | Once | Twice | 3-4 times | 5 or more times |
|--|---------------------------------------|---------------------------------------|---------------------------------------|---------------------------------------|---------------------------------------|
| Been individually bullied by a whole group of people | <input type="checkbox"/> ₁ | <input type="checkbox"/> ₂ | <input type="checkbox"/> ₃ | <input type="checkbox"/> ₄ | <input type="checkbox"/> ₅ |
| Been physically hurt by a whole group of people | <input type="checkbox"/> ₁ | <input type="checkbox"/> ₂ | <input type="checkbox"/> ₃ | <input type="checkbox"/> ₄ | <input type="checkbox"/> ₅ |
| Been in a group that was attacked by another group | <input type="checkbox"/> ₁ | <input type="checkbox"/> ₂ | <input type="checkbox"/> ₃ | <input type="checkbox"/> ₄ | <input type="checkbox"/> ₅ |
| Had someone start a fight with you individually | <input type="checkbox"/> ₁ | <input type="checkbox"/> ₂ | <input type="checkbox"/> ₃ | <input type="checkbox"/> ₄ | <input type="checkbox"/> ₅ |
| Had something worth over £10 or more stolen from you | <input type="checkbox"/> ₁ | <input type="checkbox"/> ₂ | <input type="checkbox"/> ₃ | <input type="checkbox"/> ₄ | <input type="checkbox"/> ₅ |
| Had someone break into your home to steal something | <input type="checkbox"/> ₁ | <input type="checkbox"/> ₂ | <input type="checkbox"/> ₃ | <input type="checkbox"/> ₄ | <input type="checkbox"/> ₅ |
| Had someone damage your belongings on purpose | <input type="checkbox"/> ₁ | <input type="checkbox"/> ₂ | <input type="checkbox"/> ₃ | <input type="checkbox"/> ₄ | <input type="checkbox"/> ₅ |
| Bought stolen goods | <input type="checkbox"/> ₁ | <input type="checkbox"/> ₂ | <input type="checkbox"/> ₃ | <input type="checkbox"/> ₄ | <input type="checkbox"/> ₅ |

That's it! Thank you for completing the questionnaire.

APPENDIX C
INSTRUCTIONS GIVEN ORALLY TO STUDENTS

This questionnaire seeks to obtain post-primary students' views and experiences of alcohol and illegal drugs. The answers will be combined to form a general picture of students' views. There is a lot of talk these days about these subjects, but very little accurate information. Therefore, we still have a lot to learn about the actual experiences and attitudes of people your age.

This is an anonymous survey. Please do not put your name anywhere on this questionnaire. We will have no means of matching your name with your questionnaire. Your parents, teachers, or other authorities will not see your answers. The research workers are the only people who will see your questionnaire.

The research report will not include any results for single classes. Your school has been randomly selected to take part in this study. If the study is to be successful, it is important that you answer each question as thoughtfully and frankly as possible. Remember your answers are totally confidential.

The study is completely voluntary. We hope that you can answer all questions, but if there is any question that you find objectionable for any reason or that you feel you cannot answer honestly, just leave it blank.

This is not a test. There are no right or wrong answers. If you do not find an answer that fits exactly, mark the one that comes closest. Please mark your answer to each question by ticking the appropriate box.

Please do not discuss the questionnaire or your answers with anyone else while you are completing the survey. It is your views that are being sought. If you want to change an answer once you've marked it, please erase it or draw a slash through it. Then mark your new answer and draw a circle around it.

THANK YOU FOR YOUR HELP.

Appendix D
Additional information on TAD misuse for the combined sample

Tobacco

Table D1: Level of smoking over past 30 days by gender and school year

| Smoked during last 30 days | 2 nd Year | 5 th Year | Male | Female | All Students | |
|----------------------------|----------------------|----------------------|------|--------|--------------|------|
| | % | % | % | % | % | n. |
| Have not smoked | 75 | 62 | 73 | 66 | 69 | 2056 |
| Have smoked | 25 | 38 | 27 | 34 | 31 | 927 |
| Total | 100 | 100 | 100 | 100 | 100 | 2983 |

Alcohol

Table D.2: Occasions, in last thirty days, during which more than 5 drinks were consumed

| 5 or more drinks in a row | 2 nd Year | 5 th Year | Male | Female | All Students | |
|---------------------------|----------------------|----------------------|------|--------|--------------|------|
| | % | % | % | % | % | n. |
| None | 65 | 33 | 47 | 48 | 47 | 1008 |
| One | 12 | 13 | 12 | 13 | 13 | 273 |
| Two | 7 | 13 | 12 | 9 | 10 | 222 |
| 3 to 5 | 9 | 23 | 16 | 17 | 17 | 356 |
| 6 to 9 | 4 | 10 | 7 | 8 | 7 | 154 |
| 10 or more | 3 | 8 | 6 | 5 | 6 | 118 |
| Total | 100 | 100 | 100 | 100 | 100 | 2130 |

Table D.3: Occasion during past year when respondents drank on two or more successive days

| Two or more successive days drinking | 2 nd Year | 5 th Year | Male | Female | All Students | |
|--------------------------------------|----------------------|----------------------|------|--------|--------------|------|
| | % | % | % | % | % | n. |
| Never | 55 | 35 | 44 | 44 | 44 | 931 |
| 1-2 times in the year | 24 | 28 | 27 | 25 | 26 | 546 |
| 3-5 times in the year | 8 | 15 | 12 | 11 | 12 | 247 |
| 6-10 occasions in the year | 4 | 8 | 6 | 7 | 6 | 130 |
| About once a month | 3 | 6 | 4 | 5 | 5 | 96 |
| 2-3 occasions a month | 3 | 4 | 4 | 4 | 4 | 86 |
| More often | 3 | 5 | 4 | 4 | 4 | 84 |
| Total | 100 | 100 | 100 | 100 | 100 | 2120 |

Table D.4: Alcohol consumption of reference groups and individuals in respondents' social environment

| Frequency | Mother | Father | Best Friend | Other friends | Most students |
|----------------------|--------|--------|-------------|---------------|---------------|
| | % | % | % | % | % |
| Not at all | 25 | 16 | 27 | 21 | 7 |
| An odd time | 27 | 22 | 23 | 24 | 20 |
| About once a month | 9 | 8 | 12 | 14 | 13 |
| 2-3 times a month | 13 | 15 | 19 | 21 | 26 |
| 1-2 times a week | 21 | 29 | 16 | 17 | 26 |
| Several times a week | 4 | 8 | 3 | 3 | 6 |
| Every day | 1 | 3 | 1 | 1 | 2 |
| Total | 100 | 100 | 100 | 100 | 100 |

Table D.5: The likely effects of alcohol consumption

| Likely effects of drink on person surveyed | Very Likely | Likely | Unsure | Unlikely | Very Unlikely. | Total |
|--|-------------|--------|--------|----------|----------------|-------|
| | % | % | % | % | % | % |
| Feel relaxed | 26 | 37 | 22 | 7 | 9 | 100 |
| Harms Health | 19 | 22 | 25 | 18 | 16 | 100 |
| Feel Happy | 36 | 40 | 14 | 5 | 5 | 100 |
| Forget problems | 26 | 26 | 22 | 15 | 12 | 100 |
| Cannot stop | 9 | 10 | 16 | 24 | 40 | 100 |
| Hangover | 20 | 30 | 16 | 16 | 18 | 100 |
| Friendly | 37 | 35 | 16 | 6 | 6 | 100 |
| Bad behaviour | 21 | 25 | 22 | 16 | 16 | 100 |
| Fun | 42 | 34 | 13 | 5 | 5 | 100 |
| Feel sick | 20 | 26 | 20 | 20 | 14 | 100 |

Table D.6: Reaction of Peers and Parents to alcohol consumption

| Would disapprove if I took 2 or 3 drinks | Strongly | A little | Not at all | No such person | Total |
|--|----------|----------|------------|----------------|-------|
| | % | % | % | % | % |
| Mother | 61 | 26 | 11 | 2 | 100 |
| Father | 57 | 27 | 13 | 3 | 100 |
| Best friend | 9 | 16 | 71 | 5 | 100 |
| Other good friends | 7 | 18 | 71 | 4 | 100 |
| Students my age | 2 | 11 | 81 | 6 | 100 |

Drugs**Table D.7: Number of occasions glue was sniffed**

| Occasions | In lifetime | Last 12 months | Last 30 days |
|------------|-------------|----------------|--------------|
| | % | % | % |
| 0 | 78.9 | 86.3 | 93.2 |
| 1-2 | 11.3 | 7.7 | 3.5 |
| 3-5 | 3.5 | 2.5 | 1.5 |
| 6-9 | 2.2 | 1.4 | 0.8 |
| 10-19 | 1.4 | 1.0 | 0.4 |
| 20-39 | 1.1 | 0.7 | 0.2 |
| 40 or more | 1.6 | 0.4 | 0.3 |
| Total | 100 | 100 | 100 |

Table D.8: Percentage of respondents who had heard of different substances

| Heard of drugs | 2 nd years | 5 th year | All Students |
|-----------------|-----------------------|----------------------|--------------|
| | % | % | % |
| Tranquillisers | 61 | 83 | 72 |
| Marijuana | 94 | 97 | 96 |
| LSD | 43 | 81 | 61 |
| Amphetamines | 29 | 62 | 44 |
| Crack | 89 | 94 | 92 |
| Cocaine | 92 | 95 | 93 |
| Heroin | 91 | 94 | 92 |
| Ecstasy | 85 | 95 | 89 |
| Methadone | 47 | 71 | 58 |
| Magic Mushrooms | 68 | 93 | 79 |

Table D.9: Places where those who have used drugs feel cannabis can be easily obtained

| Place | 2 nd year | 5 th Year | Male | Female | All Students | |
|------------------------------|----------------------|----------------------|------|--------|--------------|-------------------|
| | % | % | % | % | % | Response per case |
| Street, park etc. | 43 | 45 | 44 | 44 | 44 | 272 |
| House of a dealer | 41 | 43 | 35 | 49 | 42 | 260 |
| Disco, bar, etc | 27 | 40 | 32 | 39 | 35 | 217 |
| School | 25 | 31 | 33 | 26 | 29 | 180 |
| Don't know of any such place | 16 | 10 | 13 | 11 | 12 | 75 |
| Other place(s) | 5 | 7 | 7 | 6 | 6 | 39 |

Table D10: Places where drugs have been offered

| Environments | 2 nd Year | 5 th Year | Male | Female | All Students | |
|------------------|----------------------|----------------------|------|--------|--------------|-----|
| | % | % | % | % | % | n. |
| Street | 43 | 45 | 44 | 45 | 45 | 531 |
| Night-club/disco | 26 | 37 | 30 | 38 | 33 | 399 |
| Friend's house | 20 | 34 | 25 | 33 | 29 | 340 |
| Park, beach etc | 32 | 28 | 24 | 36 | 29 | 349 |
| School | 20 | 20 | 25 | 15 | 20 | 241 |
| Pub | 7 | 19 | 13 | 17 | 15 | 175 |
| Other | 14 | 12 | 11 | 15 | 13 | 151 |
| Concert | 9 | 16 | 12 | 14 | 13 | 153 |
| Your home | 3 | 5 | 4 | 5 | 4 | 49 |

Table D.11: What respondents would do if offered drugs

| Response | 2 nd Year | 5 th Year | Male | Female | All Students |
|---------------------------------------|----------------------|----------------------|------|--------|--------------|
| | % | % | % | % | % |
| Say no straight away | 76 | 70 | 71 | 75 | 73 |
| Feel pressurised and accept | 6 | 6 | 7 | 5 | 6 |
| Be happy to take the drug | 4 | 6 | 6 | 4 | 5 |
| Report the person to the Gardaí | 2 | 1 | 3 | 1 | 2 |
| Report the person to some other adult | 3 | 2 | 2 | 3 | 3 |
| Other | 9 | 14 | 11 | 12 | 11 |
| Total | 100 | 100 | 100 | 100 | 100 |

Table D.12: Action taken if friends took drugs

| Action | 2 nd Year | 5 th Year | Male | Female | All Students |
|-------------------------|----------------------|----------------------|------|--------|--------------|
| | % | % | % | % | % |
| Would point out dangers | 80 | 83 | 76 | 85 | 81 |
| Would tell an adult | 36 | 28 | 27 | 37 | 32 |

Table D.13: Approval and disapproval of people taking drugs

| Activity | Don't disapprove | Disapprove | Strongly disapprove | Don't know | Total |
|-------------------------|------------------|------------|---------------------|------------|-------|
| | % | % | % | % | n. |
| Cannabis once or twice | 30 | 22 | 43 | 5 | 100 |
| Cannabis on occasions | 20 | 27 | 48 | 5 | 100 |
| Cannabis regularly | 14 | 25 | 56 | 5 | 100 |
| LSD once or twice | 12 | 27 | 56 | 6 | 100 |
| LSD more often | 8 | 25 | 61 | 6 | 100 |
| Ecstasy once or twice | 11 | 23 | 60 | 5 | 100 |
| Ecstasy more often | 8 | 23 | 65 | 5 | 100 |
| Inhalants once or twice | 15 | 27 | 53 | 5 | 100 |

Table D.14: Perceived risk associated with varying degrees of drug use

| Type of Drug Use | No risk | Slight risk | Moderate risk | Great risk | Don't know | Total |
|--------------------------|---------|-------------|---------------|------------|------------|-------|
| | % | % | % | % | % | % |
| Smoke cannabis regularly | 3 | 7 | 15 | 69 | 6 | 100 |
| LSD regularly | 2 | 3 | 10 | 75 | 10 | 100 |
| Amphetamines regularly | 2 | 3 | 9 | 71 | 15 | 100 |
| Cocaine/crack regularly | 2 | 3 | 9 | 79 | 8 | 100 |
| Ecstasy regularly | 2 | 3 | 8 | 80 | 7 | 100 |
| Inhalants regularly | 3 | 5 | 17 | 68 | 7 | 100 |

APPENDIX E
Additional Information on TAD Misuse for the Waterford/Kilkenny
Division Sample

Alcohol

Table E.1: Alcohol consumption of reference groups and individuals in respondents' social environment

| Parents drink | Mother | Father | Best Friend | Other friends | Most students |
|----------------------|--------|--------|-------------|---------------|---------------|
| | % | % | % | % | % |
| Not at all | 25 | 15 | 26 | 20 | 8 |
| An odd time | 27 | 24 | 21 | 23 | 19 |
| About once a month | 10 | 8 | 11 | 13 | 12 |
| 2-3 times a month | 13 | 15 | 19 | 20 | 25 |
| 1-2 times a week | 20 | 27 | 19 | 19 | 27 |
| Several times a week | 4 | 9 | 3 | 3 | 7 |
| Every day | 1 | 2 | 1 | 1 | 2 |
| Total | 100 | 100 | 100 | 100 | 100 |

Table E.2: Breakdown of alcoholic beverages consumed by respondent over month preceding survey

| Occasions | Beer | Wine | Spirits | Cider | Alcopops |
|------------------|------|------|---------|-------|----------|
| | % | % | % | % | % |
| 0 | 56 | 71 | 57 | 64 | 57 |
| 1-2 | 19 | 18 | 17 | 16 | 19 |
| 3-5 | 10 | 5 | 11 | 9 | 12 |
| 6 or more | 15 | 5 | 16 | 12 | 13 |
| Total | 100 | 100 | 100 | 100 | 100 |

Table E.3: Occasions in last thirty days, during which more than 5 drinks were consumed

| 5 or more drinks in a row | 2 nd Year | 5 th Year | Male | Female | All Students | |
|---------------------------|----------------------|----------------------|------|--------|--------------|------|
| | % | % | % | % | % | n. |
| None | 63 | 30 | 44 | 47 | 46 | 560 |
| One | 11 | 14 | 12 | 13 | 12 | 152 |
| Two | 8 | 13 | 12 | 9 | 10 | 128 |
| 3 to 5 | 10 | 25 | 17 | 19 | 18 | 221 |
| 6 to 9 | 5 | 10 | 7 | 8 | 7 | 91 |
| 10 or more | 3 | 8 | 7 | 4 | 6 | 72 |
| Total | 100 | 100 | 100 | 100 | 100 | 1225 |

Table E.4: Level of agreement with assertions that: a) Drink is easy to obtain; b) that young people drink to keep up with friends; c) that drink is harmful to their health; d) that it makes people feel bad

| Agree or Disagree | Easy to obtain alcohol | Drink to keep up with friends | Drink harmful to health | Drink makes you feel bad |
|---------------------------|------------------------|-------------------------------|-------------------------|--------------------------|
| | % | % | % | % |
| Strongly agree | 20 | 25 | 34 | 8 |
| Agree | 40 | 38 | 43 | 10 |
| Neither agree or disagree | 19 | 17 | 15 | 35 |
| Disagree | 16 | 15 | 5 | 32 |
| Strongly disagree | 5 | 5 | 3 | 15 |
| Total | 100 | 100 | 100 | 100 |

Drugs

Table E.5: Age when students first used each of the following (5th years only)

| Age | Cannabis | LSD | Ecstasy | Heroin | Cocaine | Mushrooms |
|----------------|----------|-----|---------|--------|---------|-----------|
| | % | % | % | % | % | % |
| Age 11 or less | 4 | 5 | 0 | 0 | 6 | 3 |
| 12 | 3 | 0 | 0 | 9 | 0 | 0 |
| 13 | 10 | 3 | 6 | 9 | 1 | 6 |
| 14 | 23 | 9 | 11 | 28 | 12 | 11 |
| 15 | 30 | 40 | 32 | 18 | 26 | 52 |
| 16 | 26 | 31 | 36 | 26 | 35 | 22 |
| 17 | 4 | 11 | 12 | 9 | 21 | 6 |
| 18 | 0 | 0 | 2 | 0 | 0 | 0 |

Table E.6: Number of occasions glue was sniffed

| Occasions | In lifetime | Last 12 months | Last 30 days |
|------------|-------------|----------------|--------------|
| | % | % | % |
| 0 | 76 | 85 | 92 |
| 1-2 | 13 | 8 | 4 |
| 3-5 | 4 | 3 | 2 |
| 6-9 | 3 | 2 | 1 |
| 10-19 | 2 | 1 | 0 |
| 20-39 | 1 | 1 | 0 |
| 40 or more | 2 | 0 | 0 |
| Total | 100 | 100 | 100 |

Table E.7: Places where those who have used drugs feel cannabis can be easily obtained

| Buy pot where | 2 nd Year | 5 th Year | Male | Female | All Students | |
|-------------------------------|----------------------|----------------------|------|--------|--------------|----------------------|
| | % | % | % | % | % | Responses per cases. |
| Street, park, other open area | 41 | 51 | 46 | 49 | 48 | 194 |
| House of a dealer | 43 | 47 | 38 | 51 | 45 | 182 |
| Disco, bar, etc | 22 | 38 | 31 | 36 | 33 | 136 |
| School | 23 | 37 | 37 | 28 | 32 | 131 |
| Don't know of any place | 17 | 9 | 11 | 12 | 11 | 46 |
| Other place(s) | 7 | 4 | 5 | 5 | 5 | 19 |

Table E.8: Perceived risk associated with varying degrees of drug use

| Type of drug use | No risk | Slight risk | Moderate risk | Great risk | Don't know | Total |
|-------------------------|---------|-------------|---------------|------------|------------|-------|
| | % | % | % | % | % | % |
| Cannabis regularly | 4 | 8 | 16 | 66 | 6 | 100 |
| LSD regularly | 2 | 3 | 11 | 74 | 10 | 100 |
| Amphetamines regularly | 2 | 3 | 11 | 69 | 15 | 100 |
| Cocaine/crack regularly | 2 | 3 | 10 | 77 | 8 | 100 |
| Ecstasy regularly | 3 | 4 | 9 | 78 | 7 | 100 |
| Inhalants regularly | 3 | 5 | 18 | 66 | 7 | 100 |

Table E.9: Approval and disapproval of people taking drugs

| Activity | Don't Disapprove | Disapprove | Strongly disapprove | Don't know | Total |
|-------------------------|------------------|------------|---------------------|------------|-------|
| | % | % | % | % | % |
| Cannabis once or twice | 33 | 22 | 40 | 6 | 100 |
| Cannabis on occasions | 23 | 27 | 46 | 5 | 100 |
| Cannabis regularly | 16 | 25 | 54 | 5 | 100 |
| LSD | 13 | 27 | 55 | 6 | 100 |
| LSD | 8 | 27 | 59 | 6 | 100 |
| Ecstasy once or twice | 13 | 24 | 58 | 5 | 100 |
| Ecstasy once more often | 9 | 23 | 62 | 5 | 100 |
| Inhalants once or twice | 16 | 27 | 51 | 6 | 100 |

APPENDIX F

Additional information on TAD misuse for the Kerry Division sample.

Tobacco

Table F.1: Level of smoking over past 30 days by gender and school year

| Smoked during last 30 days | 2 nd Year | 5 th Year | Male | Female | All Students | |
|----------------------------|----------------------|----------------------|------|--------|--------------|------|
| | %. | %. | %. | %. | % | n |
| Have not smoked | 77 | 68 | 76 | 70 | 73 | 953 |
| Have smoked | 23 | 32 | 24 | 30 | 27 | 356 |
| Total | 100 | 100 | 100 | 100 | 100 | 1309 |

Alcohol

Table F.2: Occasions, in last thirty days, during which more than 5 drinks were consumed

| 5 or more drinks in a row | 2 nd Year | 5 th Year | Male | Female | All Students | |
|---------------------------|----------------------|----------------------|------|--------|--------------|-----|
| | % | % | % | % | % | n |
| None | 66 | 38 | 50 | 49 | 50 | 447 |
| One | 14 | 13 | 13 | 14 | 14 | 122 |
| Two | 6 | 13 | 12 | 9 | 10 | 93 |
| 3 to 5 | 9 | 20 | 15 | 15 | 15 | 134 |
| 6 to 9 | 3 | 9 | 5 | 8 | 6 | 58 |
| 10 or more | 3 | 7 | 5 | 5 | 5 | 45 |
| Total | 100 | 100 | 100 | 100 | 100 | 899 |

Table F.3: Alcohol consumption of reference groups and individuals in respondents' social environment

| Parents drink | Mother | Father | Best Friend | Other Friends | Most students |
|----------------------|--------|--------|-------------|---------------|---------------|
| | % | % | % | % | % |
| Not at all | 26 | 18 | 27 | 21 | 6 |
| An odd time | 26 | 19 | 25 | 26 | 23 |
| About once a month | 8 | 8 | 13 | 14 | 14 |
| 2-3 times a month | 13 | 14 | 19 | 22 | 28 |
| 1-2 times a week | 22 | 31 | 12 | 13 | 23 |
| Several times a week | 3 | 7 | 2 | 2 | 5 |
| Every day | 1 | 3 | 1 | 1 | 1 |
| Total | 100 | 100 | 100 | 100 | 100 |

Table F.4: Breakdown of alcoholic beverages consumed by respondent over month preceding survey

| Occasions | Beer | Wine | Spirits | Cider | Alcopops |
|-----------|------|------|---------|-------|----------|
| | % | % | % | % | % |
| 0 | 60 | 75 | 55 | 69 | 61 |
| 1-2 | 18 | 17 | 22 | 15 | 17 |
| 3-5 | 11 | 5 | 10 | 8 | 9 |
| 6 or more | 12 | 3 | 13 | 8 | 12 |
| Total | 100 | 100 | 100 | 100 | 100 |

Table F.5: The likely effects of alcohol consumption

| Likely effects of drink. | Very Likely | Likely | Unsure | Unlikely | Very Unlikely | Total |
|--------------------------|-------------|--------|--------|----------|---------------|-------|
| | % | % | % | % | % | % |
| Feel relaxed | 25 | 36 | 23 | 8 | 9 | 100 |
| Harms Health | 20 | 22 | 24 | 18 | 16 | 100 |
| Feel Happy | 33 | 40 | 16 | 5 | 5 | 100 |
| Forget problems | 24 | 27 | 23 | 15 | 11 | 100 |
| Cannot stop drinking | 8 | 9 | 17 | 25 | 41 | 100 |
| Hangover | 20 | 30 | 16 | 17 | 17 | 100 |
| Friendly | 37 | 33 | 17 | 7 | 6 | 100 |
| Behaviour they regretted | 21 | 24 | 24 | 17 | 14 | 100 |
| Fun | 39 | 34 | 17 | 6 | 5 | 100 |
| Feel sick | 20 | 27 | 21 | 19 | 13 | 100 |

Drugs**Table F.6: Number of occasions glue was sniffed**

| Occasions | In lifetime | Last 12 months | Last 30 days |
|------------|-------------|----------------|--------------|
| | % | % | % |
| 0 | 83 | 88 | 96 |
| 1-2 | 10 | 8 | 2 |
| 3-5 | 3 | 2 | 1 |
| 6-9 | 2 | 1 | 0 |
| 10-19 | 1 | 1 | 0 |
| 20-39 | 1 | 0 | 0 |
| 40 or more | 1 | 1 | 0 |
| Total | 100 | 100 | 100 |

Table F.7: Percentage of respondents who had heard of different substances

| Drug | 2 nd Year | 5 th Year | All Students |
|-----------------|----------------------|----------------------|--------------|
| | % | % | % |
| Tranquillisers | 63 | 84 | 74 |
| Marijuana | 94 | 98 | 96 |
| LSD | 43 | 83 | 64 |
| Amphetamines | 31 | 64 | 48 |
| Crack | 89 | 95 | 92 |
| Cocaine | 92 | 96 | 94 |
| Heroin | 92 | 95 | 93 |
| Ecstasy | 87 | 96 | 92 |
| Methadone | 49 | 73 | 61 |
| Magic mushrooms | 62 | 92 | 77 |

Table F.08: When last drug taken

| Occasion | All | All Students Cumulative | All Students |
|------------------------------|------|-------------------------|--------------|
| | % | % | n |
| Not within the last year | 21.3 | 21.3 | 51 |
| Within the last few days | 12.6 | 12.6 | 30 |
| Within the last two weeks | 11.0 | 23.6 | 26 |
| Within the last month | 13.3 | 36.9 | 32 |
| Within the last three months | 10.8 | 47.7 | 26 |
| Within the last six months | 11.4 | 59.1 | 27 |
| Within the last nine months | 3.1 | 62.2 | 7 |
| Within the last year | 16.4 | 78.6 | 39 |
| Total | 100 | 100 | 238 |

Table F.09: When last drug taken by age and gender

| Occasion | 2 nd Year | 5 th Year | Male | Female | All Students | |
|------------------------------|----------------------|----------------------|------|--------|--------------|-----|
| | % | % | % | % | % | n |
| Not within the last year | 24 | 20 | 20 | 24 | 21.3 | 51 |
| Within the last few days | 11 | 14 | 15 | 9 | 12.6 | 30 |
| Within the last two weeks | 12 | 11 | 11 | 12 | 11.0 | 26 |
| Within the last month | 14 | 13 | 13 | 14 | 13.3 | 32 |
| Within the last three months | 10 | 11 | 14 | 6 | 10.8 | 26 |
| Within the last six months | 15 | 10 | 10 | 14 | 11.4 | 27 |
| Within the last nine months | 0 | 4 | 4 | 1 | 3.1 | 7 |
| Within the last year | 14 | 18 | 14 | 20 | 16.4 | 39 |
| Total | 100 | 100 | 100 | 100 | 100 | 238 |

Table F.10: Where drug users last obtained drugs by age and gender.

| Where obtained | 2 nd Year | 5 th Year | Male | Female | All Students |
|---------------------|----------------------|----------------------|------|--------|--------------|
| | % | % | % | % | % |
| Friend | 60 | 76 | 70 | 71 | 71 |
| Brother/sister | 3 | 2 | 2 | 4 | 3 |
| Dealer and supplier | 24 | 16 | 20 | 16 | 18 |
| Other | 13 | 6 | 8 | 9 | 8 |

Table F.11: Places where those who have used drugs feel cannabis can be easily obtained

| Place | 2 nd Year | 5 th Year | Male | Female | All Students | |
|-------------------------------|----------------------|----------------------|------|--------|--------------|--------------------|
| | % | % | % | % | % | Response per cases |
| Disco, bar, etc | 41 | 42 | 37 | 48 | 42 | 89 |
| Street, park, other open area | 49 | 31 | 42 | 30 | 37 | 79 |
| House of a dealer | 37 | 33 | 30 | 40 | 34 | 74 |
| School | 31 | 21 | 25 | 24 | 24 | 52 |
| Don't know of any such place | 14 | 14 | 17 | 10 | 14 | 30 |

| | | | | | | |
|----------------|---|----|----|----|----|----|
| Other place(s) | 3 | 15 | 11 | 11 | 11 | 24 |
|----------------|---|----|----|----|----|----|

Table F.12: How difficult drug users rated obtaining certain drug.

| Drugs | Not possible | Very difficult | Fairly difficult | Fairly easy | Very easy | Don't know |
|-----------------|--------------|----------------|------------------|-------------|-----------|------------|
| | % | % | % | % | % | % |
| Cannabis | 7 | 6 | 28 | 30 | 19 | 11 |
| LSD | 10 | 18 | 30 | 11 | 5 | 27 |
| Ecstasy | 9 | 14 | 25 | 19 | 9 | 24 |
| Heroin | 13 | 23 | 26 | 7 | 5 | 26 |
| Cocaine | 8 | 20 | 28 | 11 | 7 | 26 |
| Magic mushrooms | 8 | 13 | 21 | 26 | 10 | 22 |